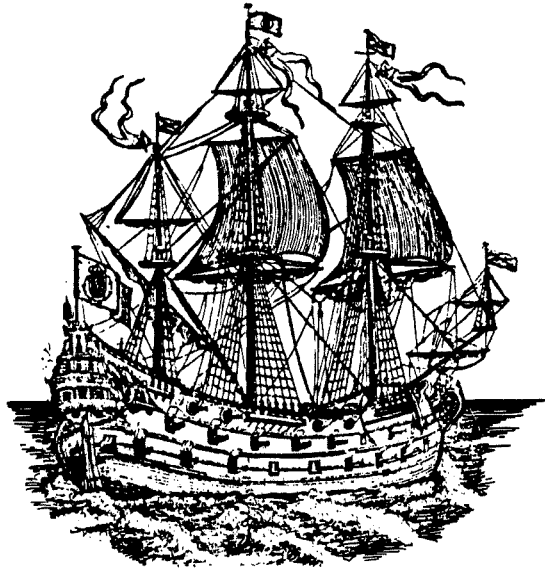


The background of the cover is a deep blue underwater scene. In the upper right, a diver in a scuba suit and tank is swimming towards the left, with bubbles rising from their regulator. Below the diver, the skeletal remains of a shipwreck are visible, including large, dark, rectangular beams and other structural elements. Several fish of various sizes are scattered throughout the water, some swimming near the wreckage. The overall atmosphere is mysterious and historical.

EDITED BY GEORGE F. BASS

*SHIPS AND  
SHIPWRECKS  
OF THE  
AMERICAS*

A HISTORY BASED ON  
UNDERWATER ARCHAEOLOGY



*SHIPS AND SHIPWRECKS  
OF THE AMERICAS*



# SHIPS AND SHIPWRECKS OF THE AMERICAS

---

*A History Based on Underwater Archaeology*

---

*Edited by* GEORGE F. BASS

*With 376 illustrations, 80 in colour*



*Thames and Hudson*

To John H. Baird,  
pioneer patron of nautical archaeology,  
and friend

# Contents

## Editor's Note

We have tried to be consistent in the spelling of placenames, using those which appear most frequently in English, or those used by accepted authorities, although these may not have been the first choices of individual authors in this book. Both English and metric measurements are given, which has led to minor problems. Archaeologists normally use the metric system in recording their sites, whether watercraft or not, but many of these watercraft were built to the English standard. We have, therefore, for instance, given the metric measurements first in Chapter One, which concerns pre-Columbian watercraft not built by people using feet and inches, whereas in Chapter Ten, discussing nineteenth-century steamboats, English measurements are listed first. Approximate figures present a problem: a vessel 'around 45 ft long' becomes an overly precise 'around 13.7 m' long when converted literally, and the measurement cited first should be taken to be the more correct one.

*Title page* A diver dismantles a floor timber from a sixteenth-century Basque galleon found in Red Bay, Labrador. See Chapter Four.

Any copy of this book issued by the publisher as a paperback is sold subject to the condition that it shall not by way of trade or otherwise be lent, resold, hired out or otherwise circulated without the publisher's prior consent in any form of binding or cover other than that in which it is published and without a similar condition including these words being imposed on a subsequent purchaser.

● 1988 and 1996 Thames and Hudson Ltd, London  
First paperback edition 1996

All Rights Reserved. No part of this publication may be reproduced or transmitted in any form or by any means, electronic or mechanical, including photocopy, recording or any other information storage and retrieval system, without prior permission in writing from the publisher.

ISBN 0-500-27892-x

Printed and bound in Spain by  
Artes Graficas Toledo S.A.  
D.L.: TO-344-1996

## Introduction

George F. Bass

INSTITUTE OF NAUTICAL ARCHAEOLOGY  
TEXAS A&M UNIVERSITY

*pages 9-12*

## CHAPTER ONE

### *The Earliest Watercraft: From Rafts to Viking Ships*

Margaret E. Leshikar

INSTITUTE OF NAUTICAL ARCHAEOLOGY  
TEXAS A&M UNIVERSITY

*pages 13-32*

North America: Skin Boats and Canoes	
The Caribbean Islands	19
Middle America: Vessels of the Maya and Aztec	22
South America: From Rafts to Dugouts and	
Reed Boats	27
Pre-Columbian Visitors to the New World	30
Conclusion	32

CHAPTER TWO

*The Voyages of Columbus:  
The Search for His Ships*

Roger C. Smith

DIVISION OF HISTORICAL RESOURCES  
FLORIDA

*pages 33-44*

Ships of Discovery	33
The First Voyage	38
The Second Voyage	38
The Fourth and Final Voyage	40

CHAPTER THREE

*Shipwrecks of  
the Explorers*

Donald H. Keith

INSTITUTE OF NAUTICAL ARCHAEOLOGY  
TEXAS A&M UNIVERSITY

Early Maps of the New World	45
English and Portuguese Seafarers	47
Spanish Exploration of the New World	47
Evidence from Shipwrecks	49
An Archaeological Benchmark: The Padre Islands Wrecks	50
Caribbean Survey	56
The Emerging Picture	64

CHAPTER FOUR

*Basque Whalers in the New World:  
The Red Bay Wrecks*

Robert Grenier

MARINE ARCHAEOLOGY UNIT  
ENVIRONMENT CANADA – PARKS

Vessels and Wrecks	69
The Organization of Voyages	79
Whaling	81
The Financial Rewards	83

CHAPTER FIVE

*Treasure Ships of the Spanish Main:  
The Iberian-American  
Maritime Empires*

Roger C. Smith

DIVISION OF HISTORICAL RESOURCES  
FLORIDA

*pages 85-106*

The Cayo Nuevo Shipwreck	87
The 1554 Fleet	89
The Bermuda Wrecks	89
Wrecks of Spanish Galleons	91
The Plate Fleets	95
The Quicksilver Transports	103
Portuguese Shipping	104

CHAPTER SIX

*The Thirteen Colonies:  
English Settlers and Seafarers*

J. Richard Steffy

INSTITUTE OF NAUTICAL ARCHAEOLOGY  
TEXAS A&M UNIVERSITY

*pages 107–128*

The First Settlements	107
The Settlers' Ships	107
Early Boatbuilding and Navigation	114
The Colonies Take Root	116
Vessels of the Eighteenth Century	119
The Final Years	128

CHAPTER SEVEN

*Struggle for a Continent:  
Naval Battles of the  
French and Indian Wars*

Kevin J. Crisman

BASIN HARBOR MARITIME MUSEUM  
VERMONT

The European Colonization of North America	129
Bateaux: Sturdy Transports on Rivers and Lakes	130
King William's War	138
Queen Anne's War	139
King George's War	139
The French and Indian War	141
The Sloop <i>Boscawen</i>	142
The <i>Machault</i>	147
The Fall of New France	148

CHAPTER EIGHT

*Gunboats and Warships  
of the American Revolution*

John O. Sands

COLONIAL WILLIAMSBURG FOUNDATION  
VIRGINIA

*pages 149–168*

In Search of Relics	150
Penobscot Privateer	155
Yorktown: A British Defeat on Land and Sea	160
The Yorktown Warships	163
The Yorktown Merchant Ships	166
The Future of the Past	168

CHAPTER NINE

*The War of 1812:  
Battle for the Great Lakes*

Kenneth A. Cassavoy and  
Kevin J. Crisman

CENTENNIAL COLLEGE, TORONTO  
BASIN HARBOR MARITIME MUSEUM, VERMONT

U.S. and British Naval Policies up to 1812	169
1812: An Indecisive Year	170
1813: Year of the Shipwrights	172
The <i>Hamilton</i> and <i>Scourge</i>	173
1814: The War Ends	178
The Kingstons Fleet after 1814	182
Lake Champlain The <i>Ticonderoga</i> and the <i>Eagle</i>	182
Lake Huron	186

CHAPTER TEN

*Steamboats on Inland Waterways:  
Prime Movers of Manifest Destiny*

Joe J. Simmons III

INSTITUTE OF NAUTICAL ARCHAEOLOGY  
TEXAS A&M UNIVERSITY

*pages 189–206*

- The Birth of the Steamboat  
as a Commercial Venture 189  
Steamboats on the Great Lakes 192  
Western Steamboats 193  
Diversification of the Western Steamboat 198  
The Decline of Steamboating 206

CHAPTER ELEVEN

*The Civil War at Sea:  
Dawn of an Age of  
Iron and Engineering*

Gordon P. Watts, Jr

PROGRAM IN MARITIME HISTORY AND  
UNDERWATER RESEARCH  
EAST CAROLINA UNIVERSITY

*pages 207–230*

- The First Ironclads 207  
Search for the *Monitor* 210  
Ironclads Triumphant 214  
Blockade Runners 216  
The Commerce Raiders 219  
The Gunboats 220  
Submarines 225

CHAPTER TWELVE

*The End of the Age of Sail:  
Merchant Shipping in the  
Nineteenth Century*

Paul Forsythe Johnston

PEABODY MUSEUM, SALEM, MASS.

*pages 231–250*

- Trade Expands: The Century Begins 231  
The Heyday 234  
The Rise of the Steamship 238  
The Gold Rush Ship *Niantic* 242  
Clipper Ships 243  
Whaling and the Beginning of the End 245  
Down-Easters: The Last American Square-Riggers 247  
The End of the Century 249

*Epilog*

George F. Bass and  
Captain W. F. Searle, USN (ret)

*pages 251–259*

- Breadalbane* 251  
The Beginning of Deep Search and Recovery 252  
*Titanic* 253  
Deep Cargo Salvage 255  
*Andrea Doria* 256  
Shipwrecks and Society 256

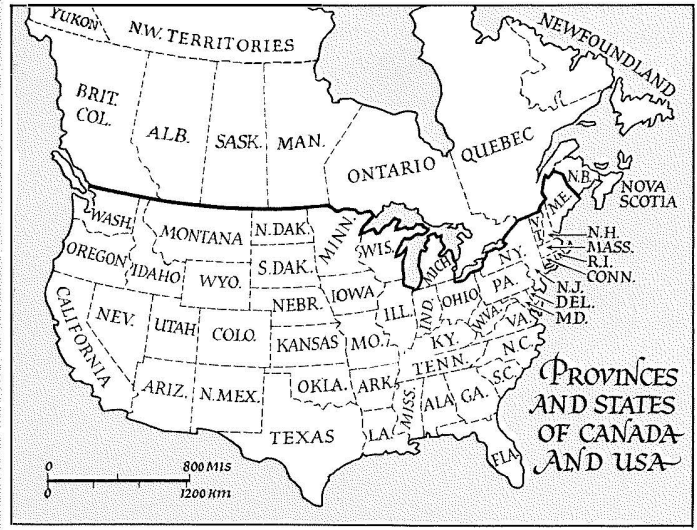
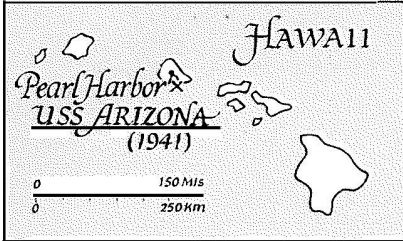
*Glossary* 260

*Brief Guide to Museums and Research Institutes* 261

*Sources of Quotations* 262 *Further Reading* 263

*Sources of Illustrations* 267 *Index* 269





A T L A N T I C O C E A N

P A C I F I C O C E A N

CAPE HORN TIERRA DEL FUEGO

FALKLAND IS.  
 Port Stanley  
 SNOW SQUALL (1864)

Rio de la Plata

Rio de Janeiro

SALVADOR (Bahia)  
 SACRAMENTO (1668)

COLOMBIA

VENEZUELA

CENTRAL AMERICA

CARIBBEAN SEA

GULF OF MEXICO

MEXICO

SPIRO

OMAHA

BERTRAND (1865)

FORT BENTON

CORNWALLIS I.

BREDA (1853)

RED BAY WRECKS (c.1565)

L'ANSE AUX MEADOWS (c.1000)

TITANIC (1912)

ANDREA DORIA (1956)

SAN FRANCISCO

NIANTIC (1851)

CHANNEL IS.

ARCTIC OCEAN

GREENLAND

ICELAND

Point Barrow

Bering Strait

ALASKA

CORNWALLIS I.

BREDA (1853)

BAFFIN

KING WILLIAM I.

LABRADOR

RED BAY WRECKS (c.1565)

L'ANSE AUX MEADOWS (c.1000)

NEWFOUNDLAND

NOVA SCOTIA

CAPE COD

ANDREA DORIA (1956)

BERMUDA

CAPE HATTERAS

The Great Lakes

Appalachian Mountains

GULF OF MEXICO

CARIBBEAN SEA

VENEZUELA

COLOMBIA

MANABI PROVINCE

ECUADOR

SECHURA DESERT

Paita

Amazon R.

Rio Esmeraldas

BRAZIL

PERU

BOLIVIA

AMERICA

Mountains

IL

CA

EA

IA

NA

Rio de la Plata

Rio de Janeiro

SALVADOR (Bahia)  
 SACRAMENTO (1668)

FALKLAND IS.  
 Port Stanley  
 SNOW SQUALL (1864)

Straits of le Maire

CAPE HORN TIERRA DEL FUEGO

# Introduction

George F. Bass

It is impossible to imagine a history of the Americas without ships and boats.

The European discovery, exploration, colonization, commercial development and defense of this New World have all depended on ships.

But European explorers, even as early as Leif Eirikson, were not the first to use water transport in the Americas. Columbus' ships were met by Caribbean watercraft, and Europeans who followed the great admiral encountered specialized local craft – birchbark canoes, log dugouts, skin-covered kayaks and reed *balsas* as they pushed overland from the Atlantic to the Pacific.

The soldiers, priests, merchants and adventurers who both westernized and plundered much of South and Middle America arrived by sea. Columbus himself founded the first Christian town in the Americas, La Isabela in the Dominican Republic, in 1494. Cortés, Cabral, Balboa and Pizarro were among those who followed in his wake.

Farther north, discoveries by other intrepid mariners led to the colonization of what today are the United States and Canada. Ponce de León discovered Florida in 1513 by sea, and eleven years later Verrazzano made landfall in present-day North Carolina before sailing all the way up the coast to Maine. Basque seafarers entered still more northerly waters, not for what the land could yield, but for whales.

The first permanent European settlers in North America reached Jamestown in the *Susan Constant*, *Godspeed* and *Discovery*. A replica of the *Mayflower*, which not long ago duplicated the Pilgrims' transatlantic crossing, represents the interest we still have in the vessels that populated our early colonies. The replica of a Manila galleon, recently built in Mexico, demonstrates an equal interest in the ships that once brought goods from across the Pacific, goods that were transhipped overland to cargo holds waiting to ferry them on to Europe.

Throughout the Americas, ships made possible the wretched trade in African slaves.

When some of the North American colonies opted for independence from the Old World, a naval blockade of

the York River was decisive to the outcome of the battle of Yorktown, which led to Cornwallis' final surrender of British forces.

Much later, when these colonies had become united states on the verge of becoming disunited, naval forces again played a crucial role in the outcome. In his book, *The Civil War* (1971), the eminent historian Bruce Catton writes:

While the rival armies swayed back and forth over the landscape . . . a profound intangible was slowly beginning to tilt the balance against the Confederacy. On the ocean, in the coastal sounds, and up and down the inland rivers the great force of sea power was making itself felt. By itself it could never decide the issue of the war; taken in conjunction with the work of the Federal armies, it would ultimately be decisive. In no single area of the war was the overwhelming advantage possessed by the Federal government so ruinous to Southern hopes.

Even today, the most powerful military deterrent in the Americas probably lies in the fleet of Trident submarines gliding silently beneath the waves. Even today, immigrants disembark onto American shores from ships and boats. Even today, bulk cargoes, from oil to the automobiles that devour it, reach our coasts by sea.

More than a dozen years ago, I edited *A History of Seafaring Based on Underwater Archaeology*, a book intended to combine and supplement existing information with the latest results of the new field of nautical archaeology. I had not anticipated the public interest that led, eventually, to the book's publication in six languages.

That original volume emphasized mostly earlier ships and boats, watercraft about which we would have had few details without archaeology. Only the last two of twelve chapters dealt with watercraft in the Americas. There were two reasons for this. The first was that nautical archaeology was pioneered in and matured in the Mediterranean and in Northern Europe. The second was that I believed archaeology had far more to offer to, say, the study of classical or Viking ships than to the study of

ships of the modern era. What new information could shipwreck archaeology offer us about much more recent vessels?

The answer came to me several years ago when I was asked to give a paper on 'Shipwreck Archaeology in the Eastern United States' at a published symposium organized by Louisiana State University. My own experience as an underwater archaeologist had been mostly with ancient Mediterranean shipwrecks. Thus, I was surprised to learn that we know more about the construction of Greek and Roman ships than we do of relatively modern Spanish and Portuguese ships of exploration. I found how vividly careful excavation can bring to life the crews and passengers of even more recent vessels. I was heartened to learn that a small but growing number of nautical archaeologists are conducting excavations in the New World to the same exacting standards as those established earlier in Europe.

Why nautical archaeology in the Americas has lagged behind that in Europe is not easily explained. Perhaps it is because New World archaeologists traditionally have been most interested in pre-Columbian sites and cultures. Thus, it went almost unnoticed by many of them that historic shipwrecks were being looted by treasure-hunters who would have been prohibited by law from bulldozing Indian mounds for pottery or dismantling historic dwellings for souvenirs they might sell for personal gain. At last, largely through the work of the authors of this book, nautical archaeology in the Americas has a bright future, a future to benefit historians, other archaeologists and, most importantly, the general public.

Archaeologists trained on Mediterranean shipwrecks, in fact, are playing a major role in starting scholarly underwater archaeology in the New World. I had a modest part in beginning the first scientific excavations of both American and British shipwrecks from our War of Independence. David Switzer, director of the *Defence* excavation in Maine, was trained on a Late Roman wreck in Turkey. John Broadwater, now excavating one of Cornwallis' ships in the York River, Virginia, earlier dived on wrecks in Turkey, as well as in North Carolina and Truk. The first hull Richard Steffy ever restored was that of a classical Greek ship in Cyprus. Donald Keith had excavated wrecks in the Mediterranean before beginning the first full-scale, thorough excavation ever conducted of a ship of the exploration period in the Caribbean. Their work is described in the following pages.

The chapters here, as in the original *History of Seafaring*, are all written by scholars who have studied firsthand ships and shipwrecks of the periods they cover. By good fortune, all are friends. I have personally explored with them some of the sites they describe, and in other cases they have worked on my underwater projects.

**Margaret Leshikar** describes indigenous watercraft from Peru to the northwest of North America, illustrated by evidence ranging from Maya reliefs to descriptions and drawings of early explorers in the New World; she has

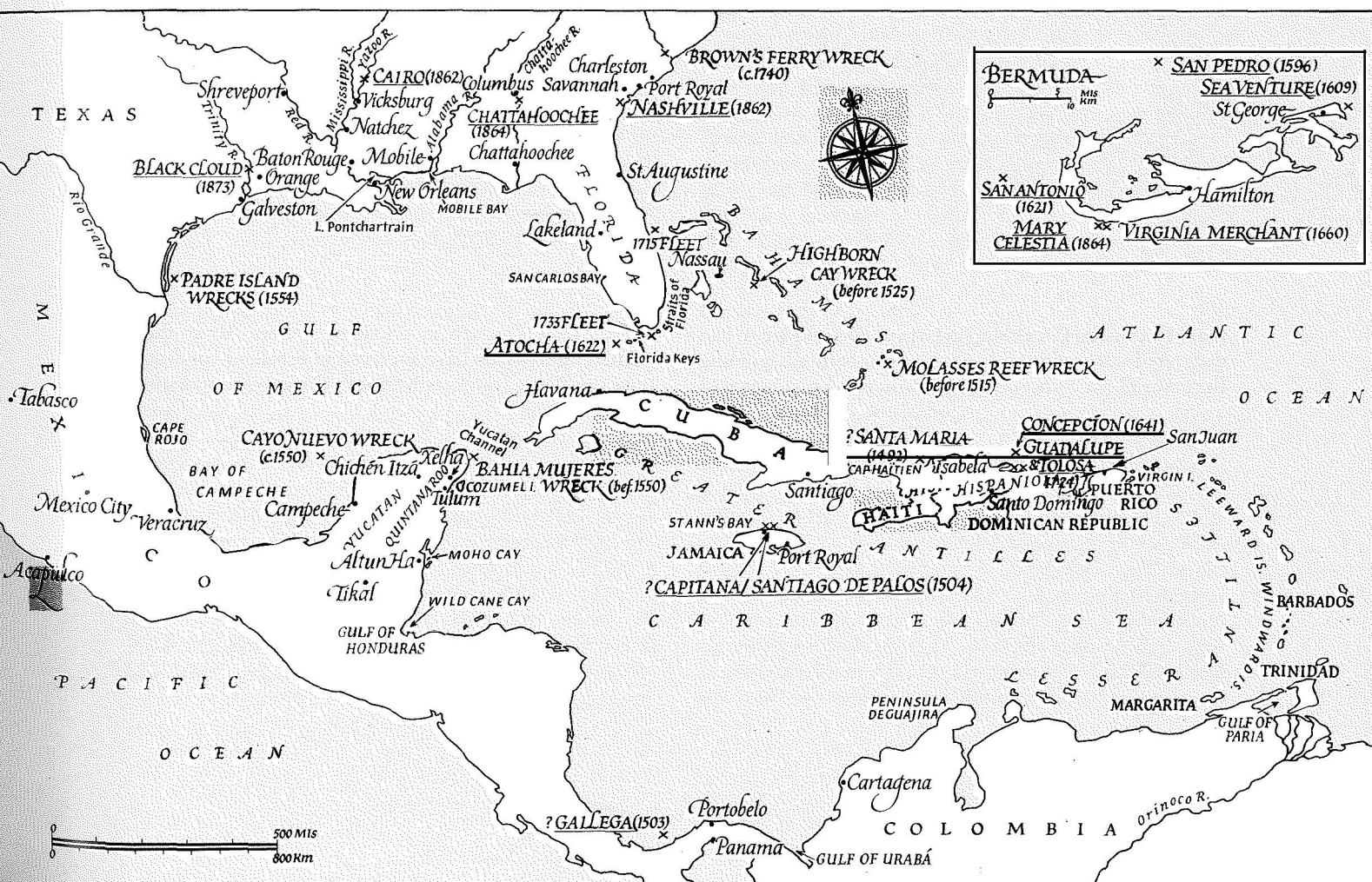
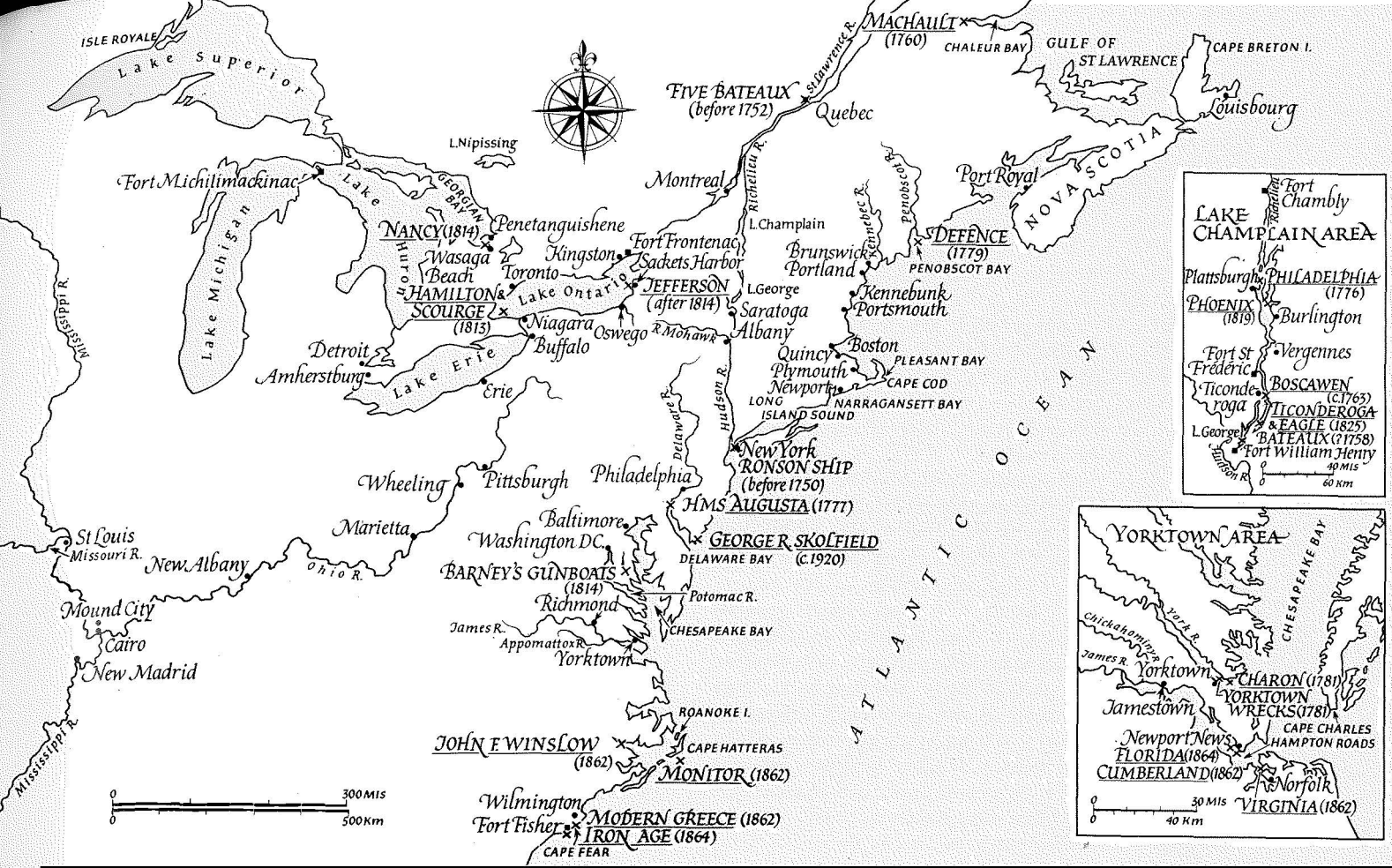
studied surviving Aztec dugouts, and has recorded in detail present methods of building dugouts in the Caribbean. **Roger Smith**, who is conducting a search for two of Columbus' ships abandoned off the north coast of Jamaica, presents evidence for locations of other Columbus shipwrecks, and what might be learned from them to supplement existing information from contemporaneous models and paintings.

**Donald Keith** moves the story forward by writing on the ships of exploration that followed immediately after Columbus, and the knowledge gleaned from the wrecks of such ships he has examined off the Bahamas, the Turks and Caicos Islands, and Mexico. Hulls of Iberian ships locked in the frozen north are better preserved than those of ships sunk in the shipworm-infested Caribbean, and these are described by **Robert Grenier**, director of the excavation of a remarkable Basque whaler in Labrador. **Roger Smith** then combines both field and archival research to present a vivid picture of the treasure-laden Spanish galleons that carried the riches of the Americas back to Europe.

Shipping in the English colonies was involved with the transport of more mundane goods and with people. **J. Richard Steffy** describes modern replicas of the famed *Mayflower*, *Susan Constant*, *Godspeed* and *Discovery* mentioned above, and provides construction details from shipwrecks of both coastal and transoceanic vessels of the period. **Kevin Crisman**, who pioneered the excavation and study of wrecks in the lakes of the northern United States, draws on an abundance of well-preserved ships to describe the role of watercraft in the westward movement of Europeans during the French and Indian War. **John Sands**, who is engaged in current excavations of British ships lost by General Cornwallis in the York River, Virginia, describes these ships in their historical context, and illustrates other ships from the War of Independence, including the American brig *Defence*, recently excavated in Maine, and the famous *Philadelphia*, raised from Lake Champlain.

Perhaps the most perfectly preserved early ships ever found in the Americas are those of the *Hamilton* and *Scourge*, sitting upright at a depth of 300 ft (90 m) on the bed of Lake Ontario in Canadian waters. Even their painted figureheads have survived in excellent condition since the War of 1812, as **Kenneth Cassavoy** and **Kevin Crisman** show.

**Joe Simmons**, in writing on the steamboats that carried bulk cargoes and passengers throughout North America, concentrates on the wreck of the *Bertrand*, a stern-wheeler sunk in the Missouri River in 1865; its excavation yielded 140 tons of mid-nineteenth century artifacts, more than a million items! **Gordon Watts** combines space-age technology and Civil War history in discussing his dives from a special submarine on the famed ironclad *Monitor*, 200 ft (60 m) below the stormy waters off Cape Hatteras. He relates his own experiences on blockade runners sunk off the same North Carolina



coast, but ranges from Texas to Mississippi in describing other wrecks from the war between the states.

**Paul Johnston** describes the great sailing vessels that made America a commercial power in the nineteenth century, from eastern whalers and Clipper ships to the wrecks of Gold Rush ships in California. Finally, I found myself so dependent on the vast knowledge of marine salvage stored by **Captain W. F. Searle**, USN (ret), who was Director of Ocean Engineering, Supervisor of Salvage, and Supervisor of Diving for the United States Navy between 1964 and 1969, that I prevailed upon him to write with me a chapter about the future of underwater archaeology in the Americas.

Many of the authors share a common training. Smith, Crisman, Cassavoy and Simmons received their MA degrees in nautical archaeology at Texas A&M University, where Steffy and I were among their professors, and where Smith and Keith are now completing doctorates. Leshikar, Sands, Watts and Johnston have assisted field projects of the Institute of Nautical Archaeology, now based at Texas A&M, where Grenier visits for consultations with Steffy. Searle, who had lent Navy support to some of my own early efforts in underwater technology, was a founding director of the Institute, and the driving force behind the Institute's first New World project—the excavation of the *Defence*. The family of nautical archaeologists remains small.

Nautical history, however, is not simply for scholars. We cannot and should not deny the simple romantic appeal of experiencing the past. As I wrote some of this introduction I was sailing through the Virgin Islands, struck by the awesome isolation of the landfalls that Columbus saw on his second voyage. One night there was a rough crossing. Most of us did not sleep. A few were seasick. Yet we were stabilized and air-conditioned, guests on the 170-ft motor yacht *Michaela Rose*. I wondered idly what it was like for the crews of early caravels and *naos* in these Caribbean waters. Later, from my porthole, I could see a future archaeological site—the rusting hulk of *Sarah*, on her side, half above and half

below the surface of the harbor of Aquilla in the British West Indies. Civilization now is near at hand. But what was it like to be wrecked centuries ago? Within sight of *Sarah* is a desert island—a few palm trees in the midst of white sand—a cartoon island out of the pages of *New Yorker* or *Punch*. One morning, sitting on the sand while my companions swam and dived, I tried to imagine the loneliness of being marooned. Even there my imagination was not vivid enough.

It was not until I had edited almost the entire manuscript and written the above words that, at last, the significance of seafaring to almost all Americans of European, African or Asian descent really struck home. Going through old family papers for the first time, I discovered that my great-great-grandfather, the Reverend William Jessup Armstrong, drowned in November 1846 when the side-wheel steamer *Atlantic* was wrecked in Long Island Sound with the loss of forty-two souls. And that my great-great-great-great-grandmother, Nancy Alexander Wauchope, gave birth to a son on 15 December 1727 during a three-month crossing from Ireland to Pennsylvania. Having made a December crossing of the North Atlantic on the *Queen Mary*, I shudder to imagine *that* experience! That ships of almost every century covered in this book affected my forebears later came to light when I found that the first European in my family to reach the New World, Captain Nathaniel Basse, arrived by ship at Jamestown on 27 April 1619. And when I learned that some of my ancestors on that paternal side were Algonkian-speaking Indians, I realized that even native American canoes and dugouts must have played a role in my distant past. I had been a nautical archaeologist for more than a quarter of a century, but it was through these dry-land discoveries that the importance of watercraft to my life, and to the lives of virtually all Americans, finally made an emotional impact. Those who want to understand the Americas and Americans cannot distance themselves from the ships and boats described in the following pages. They have touched us all.

### Editor's Note for the Paperback Edition

Since this book was first published, New World nautical archaeology has thrived, in part because of our authors. The first three received doctorates from Texas A&M University: **Margaret Leshikar-Denton** then became chief archaeologist of the Cayman Islands and published *The Wreck of the Ten Sails* (Cayman Islands National Archive and Cayman Free Press, 1994); **Roger Smith** excavated the sixteenth-century Emanuel Point wreck in Florida and published *Vanguard of Empire* (Oxford University Press, 1993); and **Donald Keith**, with **Joe J. Simmons**, founded Ships of Discovery and Exploration, a research group at the Corpus Christi Museum in Texas. **Robert Grenier's** landmark publication of Red Bay is nearing completion. Emeritus professor **J. Richard**

**Steffy** published *Wooden Ship Building and the Interpretation of Shipwrecks* (Texas A&M University Press, 1994). **Kevin Crisman**, now on the Texas A&M faculty, has completed study of the *Jefferson*, the *Boscawan*, a nineteenth-century horse-powered ferry, and numerous other wrecks in the northern lakes. **Gordon Watts** has excavated the sixteenth-century Western Ledge Reef wreck off Bermuda, and assisted a French team excavating the C.S.S. *Alabama* near Cherbourg. **Paul Johnston**, now Curator of Transportation at the Smithsonian Institution, has investigated the *Indiana*, mentioned by Simmons in his chapter, and found the long-sought American yacht *Cleopatra's Barge* off Hawaii.

# Epilog

George F. Bass and W. F. Searle

What does the future hold for ship and boat archaeology in the Americas?

Allow two veteran divers – one with a background in nautical archaeology and the other in navy and commercial salvage and wreck clearance – to close this book by speculating on the answer.

There is no question that there are and will be many sites for future study. 'Statistics for the eighteenth and nineteenth centuries', states Willard Bascom in *Deep Water, Ancient Ships*, 'indicate that approximately 40 percent of all wooden sailing ships ended their careers by running onto reefs, rocks, or beaches made of rock, sand, or coral.' Another 10 to 20 percent, Bascom estimates, sank offshore in deeper water.

*Lloyd's List* demonstrates that losses at sea remain a daily occurrence. One can add to this the myriad small craft that sink in ponds, lakes and rivers across the continents on any given date.

Although most shipwrecks studied in the near future will be in relatively shallow water, deeper wrecks are in many instances better preserved. Largely as a by-product of military research and development, there already exist the means to locate and inspect even the deepest shipwrecks or, as in the case of the *Breadalbane*, those under Arctic ice.

## **Breadalbane**

In 1846 a British expedition led by Sir John Franklin, looking for the elusive Northwest Passage between the Atlantic and Pacific Oceans, was trapped by Arctic ice while aboard the ships *Erebus* and *Terror*.

When no news had arrived from the explorers by 1847, a series of search teams were dispatched to find the lost men. One team sailed in 1853 aboard the ten-year-old British bark *Breadalbane*. But *Breadalbane* survived the cruel Arctic no better than the ships she sought. She was sunk by ice – fortunately without loss of life.

*Breadalbane's* crew did not know that they were already too late to rescue Franklin and his men. An 1859 rescue team would find on King William Island skeletons and a written account of the last days of the original, ill-fated

expedition: their ships crushed by the ice, and their leader and two dozen fellow crewmen already dead, the remaining men had abandoned the ships on 22 April 1848. The account stopped only three days later. An Eskimo witness described how the starving men had fallen and died as they walked. In 1984 archaeologists discovered some of the sailors in frozen, shallow graves.

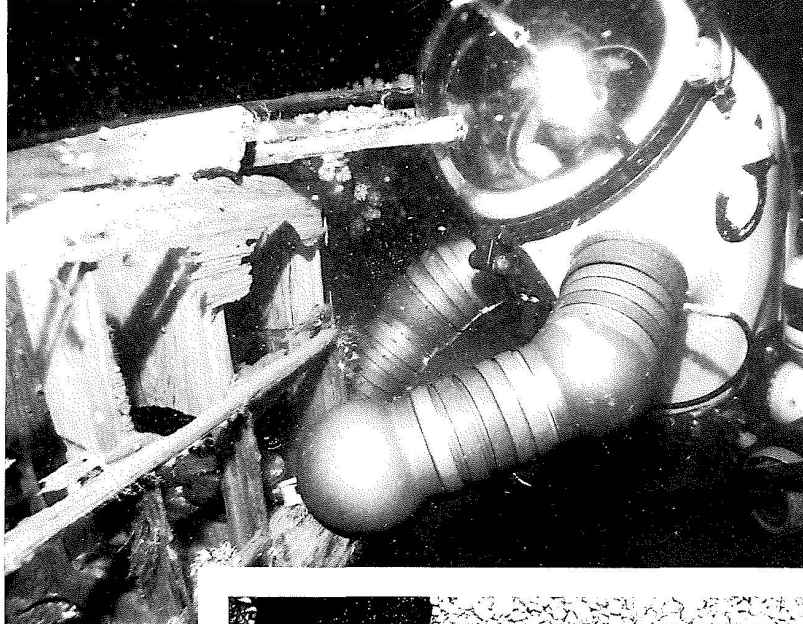
More than a century after the *Breadalbane* went down, a team of modern explorers set out to locate her remains. The problems associated with finding a shipwreck under 6 ft (1.8 m) of ice and 340 ft (100 m) of water were great, but the search, directed by Canadian physician and underwater explorer Joe MacInnis, was successful. In 1980 a Klein Associates sonar, just as on the *Hamilton* in Lake Ontario several years earlier (see Chapter Nine), printed out the ghostly silhouette of a ship still upright on the seabed, her masts standing tall.

Sonar detects wrecks by emitting sound waves and measuring with extreme accuracy the length of time it takes these sound waves to bounce back from the sea or lake bed to the sonar unit. Thus if some obstacle rests on or protrudes from the sea or lake bottom, the sound waves return from it sooner than from the bottom beyond, and this time differential is recorded on a paper chart. Sometimes the obstructions are simply rock outcrops, but as sonar becomes increasingly refined these can be distinguished on the paper from the recognizable shadows of sunken ships – such as the *Breadalbane*.

Three years after *Breadalbane* was found, MacInnis directed a large team, supported by airplanes and a snow tractor, which cut through the Arctic ice on which they were camped and lowered diver Doug Osborne to explore the remarkably preserved ship. Osborne rode in a recent invention, the WASP, a kind of one-person, surface-powered submersible with arms. The team cut another hole, through which yet another invention, a Remotely Piloted Vehicle (RPV), was lowered to enable *National Geographic* photographer Emory Kristof to record both Osborne's work and the wreck. The results show how well isolated Arctic sea water, free of marine borers, can preserve a wooden ship for more than a century.

## Frozen Tombs in the Arctic

1, 2 Petty Officer John Torrington, whose deep-frozen corpse (*below right*) lies buried in the permafrost of northern Canada's Beechey Island, was a member of the ill-fated British expedition trying to discover a Northwest Passage in 1846. The *Breadalbane*, sent in search of the lost explorers in 1853, herself was sunk by the ice. A team led by Joe MacInnis tracked down the wreck in 1980 and three years later sent diver Doug Osborne (*right*) to inspect the hull 340 ft (100 m) down in a kind of one-person submersible, the WASP.



But the technology used on *Breadalbane* would not have existed, or been so refined, had it not been for earlier work on more recent and equally tragic catastrophes – not on the sea, but under it and in the sky.

### The Beginning of Deep Search and Recovery

*Comet*. On 10 January 1954 a British Comet jet liner, with twenty-nine passengers and a crew of six, broke apart and dropped from the sky near the Italian island of Elba. The steps taken to discover the cause of the crash were similar to those used today by marine archaeologists (and were used more recently, in 1986, to explain what went wrong with the space shuttle *Challenger* after it fell into the Atlantic Ocean). It was necessary to locate the wreck, raise the pieces, and study them.

Within days of the Comet's loss, British naval vessels were on the scene, searching in 400 ft (120 m) of water. Witnesses to the crash, and reports both from the aircraft which spotted floating wreckage and from Italian sailors who picked up the only recovered bodies, narrowed the search field to an area of about 100 square miles. As with the *Breadalbane*, the first contact with the wreck was by sonar, or, as it is called in Great Britain, ASDIC. In those days, however, underwater television or manned observation capsules used for identifying sonar contacts were simply lowered, or 'dunked', from surface vessels. The only means of moving them through any kind of search pattern was to alter the position of the surface vessel by shortening or lengthening the mooring cables, or otherwise moving her about. The method was inefficient – impossible in high seas – but in this case, it was successful. The underwater television showed the sonar contact to be the Comet.

Once located, the scattered pieces of the Comet were recovered, some by a grab directed from the sea floor by an observer in a watertight capsule, but many trawled up in nets. The urgency of the operation was heightened when, on 8 April of the same year, a second Comet disappeared over the Mediterranean under similar



circumstances. In seven months about 70 percent of the first Comet had been recovered. Painstaking reconstruction pointed to the cause of the disaster – metal fatigue – and allowed successful changes in the Comet's design. No attempt was made to recover the second Comet, which sank in water more than half-a-mile deep.

'*Thresher*'. How far search and recovery techniques advanced in less than a decade was demonstrated by the search for the USS *Thresher*, a 278-ft (85-m) nuclear-propelled attack submarine, lost with her crew of 129 men on 10 April 1963. The submarine was making a test dive about 200 miles off the coast of New England when her surface escort, the Submarine Rescue Ship USS *Skylark*, heard over her underwater, sonar-like communications system sounds of what may have been an attempt to surface, a few garbled words and then silence. Although there was no chance of finding the submarine's crew alive in water 1½ miles deep, a search was immediately initiated. A fleet that grew to three dozen ships, some employing sonar and underwater cameras, was ultimately successful.

This time, however, a new dimension was added. The search was not conducted exclusively from surface vessels. The Navy employed its famous research bathyscaphe *Trieste*, which three years earlier had dived to the deepest part of any sea, almost 7 miles down. In late June, at a depth of 8,400 ft (2,600 m), and with Lieutenant

(now Rear Admiral) Brad Mooney at the controls, *Trieste II*'s crew spotted bits and pieces of what seemed to belong to the *Thresher*. In subsequent dives which continued through August, *Trieste II* not only photographed structural parts of the lost submarine, but, with an externally mounted mechanical arm, retrieved among other things several pieces of *Thresher*'s copper nickel piping. These dives led to confident conclusions as to the systems which failed and caused the submarine to be lost, and consequently led to corrective design and shipbuilding techniques.

*H bomb*. On 17 January 1966 a mid-air collision between an American strategic bomber and its refuelling tanker caused four unarmed hydrogen bombs to be dropped near Palomares, Spain. Three of the bombs impacted on land and self-destructed in non-nuclear explosions. The only remaining bomb, with its parachute intact, fell well out to sea where it promptly sank in deep water. Even though great strides had recently been made in deep ocean search and recovery techniques, the problems presented by the missing H-bomb severely tested these new capabilities.

Many of the advances were the result of study by the post-*Thresher* Navy-sponsored Deep Submergence Systems Review Group. There were other catalysts, however, than the loss of the *Thresher*. Methods of retrieving tested weapons from the sea floor, as well as mine countermeasures technology after the Korean War, led to the development of underwater robotic equipment systems which could swim down, search out objects on the sea floor and, as necessary, work on them. By the mid-1960s the result of this was the Navy's CURV (Cable-controlled Underwater Research Vehicle), the first successful, work-oriented ROV (Remote Operated Vehicle). CURV was the key to the successful manipulation which led to the recovery of the H-bomb.

A pair of manned research submersibles, *Aluminaut* and *Alvin*, both launched after the *Thresher* tragedy and both capable of diving to greater than 6,000 ft (1,800 m), were instrumental in the search and identification phases, and were critically involved in the recovery phase. Once *Alvin* had located the bomb, *Aluminaut*, with her longer battery life, drew baby-sitting duty and kept the bomb in view while *Alvin* was readied on the surface for a recovery attempt. *Alvin*'s job was to attach lines to the bomb's parachute harness by means of grappels. But this lifting attempt failed when the bomb, only a short distance off the bottom, broke free and tumbled farther down the submarine canyon in which it had been found. After several stressful days of renewed searching, the errant bomb was relocated at 2,850 ft (870 m). This was frighteningly near the maximum depth to which CURV was limited, but CURV was now given the assignment of rigging the lift lines to the bomb's parachute harness. CURV successfully attached two lift lines. Then, while maneuvering to attach a third line, its propulsion propellers became entangled in the parachute nylon,

presenting a dilemma to the controllers on the surface. In short order the decision was made to carefully lift the entire entanglement – CURV, parachute and bomb. The three were successfully raised to some 60 ft (18 m) below the deck of the lifting platform (Submarine Rescue Ship USS *Petrel*), at which point divers entered the water and attached a heavy lifting strap directly to the bomb, which was hoisted onto the ship's afterdeck. This successful operation had demonstrated for the first time the employment of both manned submersibles and unmanned vehicles in deep ocean recovery.

'*Scorpion*'. When another nuclear attack submarine, *Scorpion*, was reported missing in 1968, somewhere between the Azores and her destination in Norfolk, Virginia, the U.S. Navy was presented with a far greater challenge. The search area was enormous. The distance between the Azores and Norfolk is nearly 2,500 miles, the depth of water sometimes 4 miles. Both submarines and a fleet of surface vessels were brought into the task which lasted from May through October and involved thousands of men. Eventually the Navy's Oceanographic Research Ship USNS *Mizar*, which had photographed *Thresher* five years earlier, discovered the *Scorpion* nearly 2 miles deep and about 400 miles from the Azores.

The following year *Trieste II* dived with submarine designer/naval architect Captain Harry Jackson on board to inspect the *Scorpion* and evaluate, or at least postulate, the manner in which she was damaged and the reason for her loss. This basic lesson must not be lost on those who explore shipwrecks from submersibles. Just as physicians are called to observe patients for medical diagnoses, those observing historic shipwrecks from submersibles should include people trained to evaluate hull damage, state of preservation and other pertinent factors.

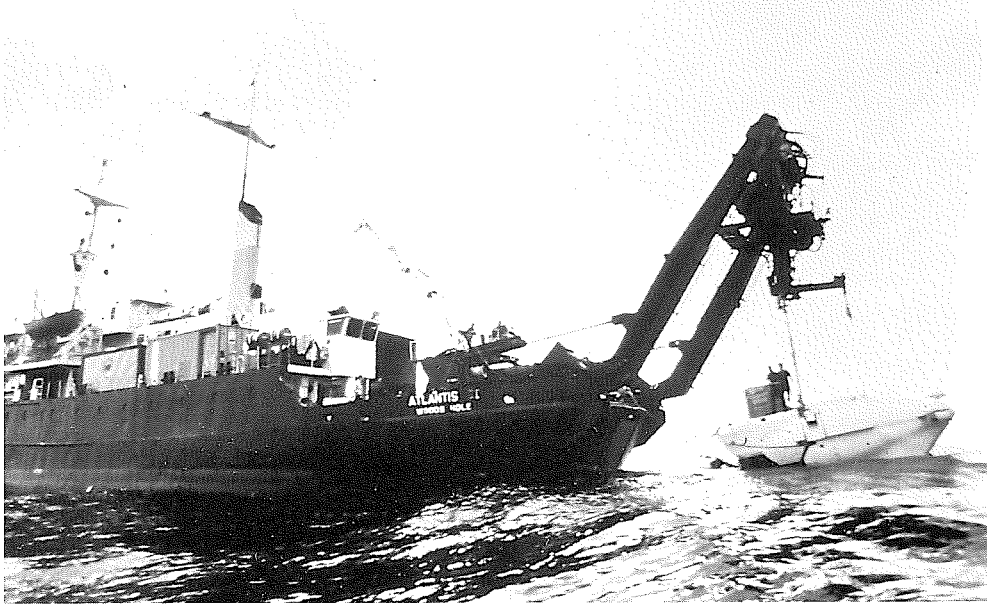
### ***Titanic***

The search and survey techniques developed by the Navy in the 1960s and afterward eventually made possible the discovery and inspection of the most famous shipwreck of modern times.

Everyone knows the story of the 'unsinkable' *Titanic*, the largest and most modern ship of her day: How she sank on her maiden voyage in April 1912 after striking an iceberg in calm seas. How radioed pleas for help were unheeded by other ships in the vicinity. How 1,522 lives were lost. As children we learned of cowardice and bravery, of insufficient lifeboats, of dying cries in the night.

Now everyone knows how a joint project from the United States and France, under Dr Robert Ballard of the Woods Hole Oceanographic Institution, and Jean-Louis Michel of the Institut Français de Recherches pour l'Exploitation des Mers, located the ship on 1 September 1985. A video cassette of the expedition became the largest selling television documentary in history, showing the interest the public has in historic shipwrecks.





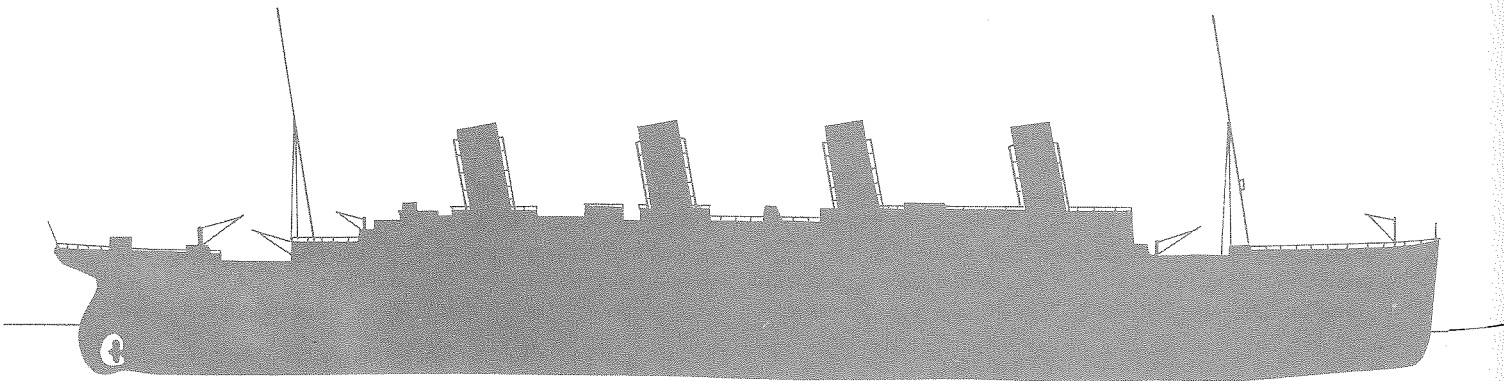
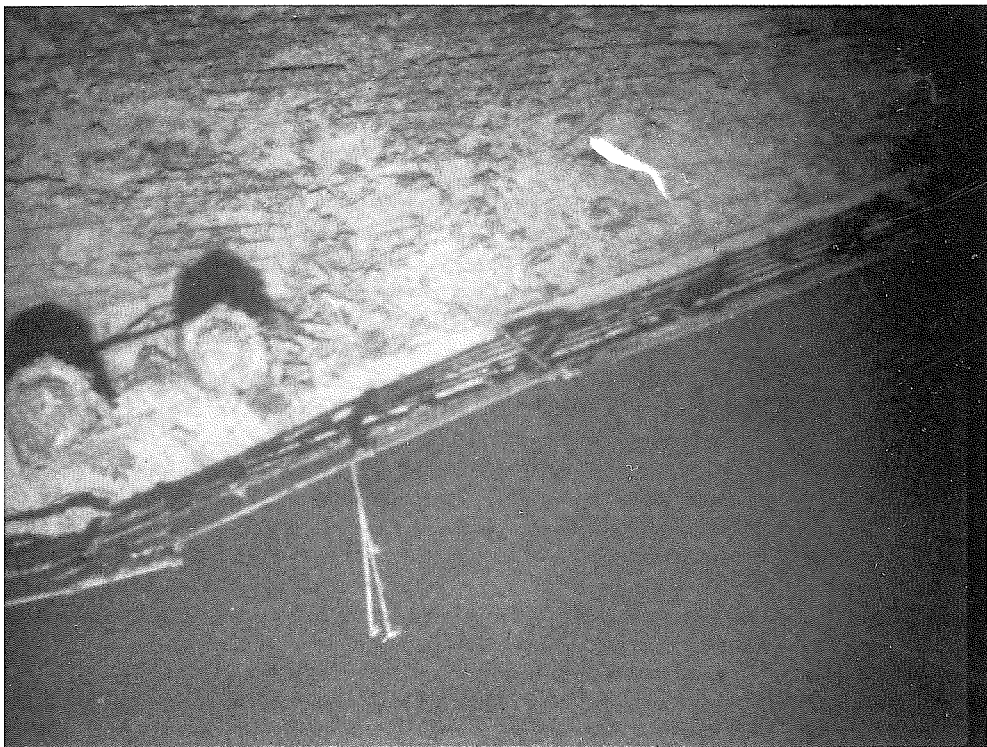
## Final Resting Place of the 'Titanic'

The largest and most modern ship of her day, the *Titanic* struck an iceberg and sank on her maiden voyage in April 1912, 350 miles southwest of Newfoundland. Now, through a triumph of present-day underwater technology, the liner has been located, mapped and explored 2½ miles deep on the ocean floor. But her discovery has created a controversy over salvage, brought to a head in July 1987 when a separate expedition raised more than 300 items from the shattered ship.

3 (above left) The U.S. research submersible *Alvin*, rebuilt with a strengthened hull to dive to 13,000 ft (4,000 m), being launched from the support ship *Atlantis II* in 1986, as part of the research expedition led by Robert Ballard of the Wood's Hole Oceanographic Institution.

4 (center left) This ghostly image – one of thousands of photographs taken of the wreck – records the edge of the *Titanic's* bow on the starboard side, with two bollards and railing visible. A 3-ft (1-m) long fish swims over the deck.

5 (below) Profile of the *Titanic*. It now appears that when she sank on the night of Sunday 14 April, her hull broke in two, the stern section pivoting round in the opposite direction from the bow. The two halves today lie 1970 ft (600 m) apart on the floor of the Atlantic.



Although not in classical domestic American waters – she lies 350 miles southeast of Newfoundland – *Titanic* was nearing North America when she sank, and her discovery is included here as an example of the use of modern technology in finding an historic wreck so far at sea, 2½ miles down on a mountainous seabed, with conflicting contemporary reports of her last position!

The wreck was spotted by video cameras that are part of *Angus*, an unmanned search system that also carried sonar and other electronic equipment down to just above the ocean floor. The following year, during a second expedition, Ballard and his colleagues inspected and photographed the wreck, inside and out, by means of *Alvin*, now rebuilt with a strengthened hull to dive to 13,000 ft (4,000 m), and *Jason Jr*, a robot tethered to *Alvin* that swam down stairwells to photograph the interior of the rusting giant.

Although no ship designers or naval architects were involved in these submarine inspections of the *Titanic*, the explorers decided that the great vessel had not been sunk, as believed, by a long gash inflicted by the iceberg. It seemed to them, instead, that the ship's riveted plates had simply separated under the blow. More surprising to them was the extensive damage caused by pressure on the hull as it sank. The stern, torn away and turned completely around, lay 600 ft (180 m) from the rest of the ship. All wood had disappeared, although ceramic, glass and other artifacts appeared like new in expedition photographs.

### Deep Cargo Salvage

When Searle was a midshipman at Annapolis in the 1940s, the 'deep ocean' commenced at the 100 fathom line, or 600 ft (180 m), leading to the phrase to 'deep six' materials such as code books, crypto wheels and the like, which meant jettisoning them deeper than 100 fathoms, where they were beyond the limits of location and retrieval. It was only after the successful search for and recovery of the H-bomb off Palomares that the jettisoning limits were redefined. But will this redefinition affect marine archaeology in the near future? Now that the deepest and most isolated wrecks can be located and visited – systems under development will soon allow the U.S. Navy to record 98 percent of the ocean bottom – what are the possibilities of actual excavation at depths inaccessible only a generation ago?

It is true that salvage operations have been conducted at appreciable depths for some time. Millions-of dollars-worth of gold and silver was salvaged in 1932–35 from the wreck of the *Egypt*, sunk 400 ft (122 m) deep in the Bay of Biscay in 1922, and additional millions in gold bars were recovered in 1941 from the *Niagara*, sunk at a similar depth off New Zealand in 1940. In both cases an observer, dangling in a metal chamber over the wreck, directed by telephone the movements of a grab sent down from the surface. And in both cases the salvors simply blasted their way through the ships with explosives. Neither technique could be employed in careful archaeological excavation.

It was the development of self contained underwater breathing apparatus (SCUBA) that revolutionized underwater archaeology around the world in the middle of the twentieth century, for it gave divers and archaeologists, for the first time, the mobility to do delicate work. Excavations conducted with SCUBA, however, are limited to depths seldom exceeding about 150 ft (46 m). There are two reasons for this. Firstly, nitrogen, which constitutes 80 percent of the air we breathe, becomes narcotic under pressure; at depths much greater than 150 ft, the diver can become confused and disoriented, incapable of careful excavation or even safe diving. Secondly, the deeper one dives and the longer one stays at depth, the greater the length of time it takes to return to the surface without risking the bends, the painful and sometimes fatal illness caused by the formation of bubbles in the bloodstream and body tissues; for the deeper one dives, the greater the pressure of the air one breathes to prevent being crushed by the increasing weight, or pressure, of the water surrounding the diver. The diver avoids the bends by rising slowly to the surface, usually in stages, pausing for certain lengths of time at various depths determined by how deep he or she has been and how long the dive. At each pause, or stage, the diver breathes off more of the pressurized nitrogen in his system. This is called decompression. A twenty-minute dive at 150 ft (46 m), for example, calls for more than eleven minutes of decompression. A one-hour dive at the same depth, however, calls for nearly two hours of decompression, which is totally impractical in any extended diving operation, especially since archaeological teams, for safety, usually decompress much more than is required, often using pure oxygen to hasten the removal of nitrogen from their bodies.

There are methods of overcoming both nitrogen narcosis and the impracticality of inordinately long decompression following each dive. If a diver breathes something other than air, most commonly heliox (a mixture of helium and oxygen rather than the normal nitrogen and oxygen of air), nitrogen narcosis is avoided. Avoiding intolerable decompression periods after extremely long, deep dives, however, is more complex and is dependent on a technique known as saturation diving.

As described above, the deeper one dives and the longer one stays at depth, the more pressurized gas (whether air or heliox) one absorbs into the system, thus necessitating decompression periods of ever-increasing lengths. At some point, however, the diver's body has absorbed all the pressurized gas it can hold. After this saturation point, the length of decompression is not increased, regardless of how much longer the diver stays at depth.

Saturation diving allows divers to live under pressure for days or weeks at a time. Normally they live in pressurized metal chambers aboard surface vessels, and are lowered to the seabed in pressurized capsules from which they can exit and work for several hours. At the end

of their work period, they re-enter the capsule, seal its hatch, and are raised back to the surface where the capsule is mated with the deck chamber in which they live. After days or weeks or even months the amount of decompression will be great several days but once the diver has become saturated his decompression penalty will not increase.

This was the method used in 1981 to salvage £45 million in Soviet gold bullion from the HMS *Edinburgh*, sunk during World War II in 800 ft (250 m) of water 170 miles north of Murmansk.

Saturation divers may, alternatively, live on the seabed in an underwater habitat, but when they do surface they must still be raised in a pressurized capsule and locked into a deck chamber for the proper period of decompression.

Both approaches to saturation diving have been used on another famous shipwreck.

### *Andrea Doria*

At 11:10 pm on 25 July 1956, 50 miles south of Nantucket Island, the 697-ft (212-m) *Andrea Doria*, pride of Italy's passenger fleet, collided with the Swedish liner *Stockholm* and settled on her starboard side in 240 ft (73 m) of water. Thirty-four people were killed by the collision, but the ship did not stop claiming victims. Because she can be reached by air diving, but only at great risk, she remains especially dangerous.

Immediately following the disaster, divers descended at least to the ship's uppermost structure, 165 ft (50 m) deep, to obtain 'front page' or 'cover' photographs, and these dives were followed by more-or-less 'official investigation dives', during the training for which one diver died while using an unfamiliar mixed-gas breathing system.

In the intervening years since the *Doria* went down there have been numerous diving expeditions to her, both surface-based air dives and at least three expeditions using saturation techniques. Dive-shop gossip has it that freelance divers have hacksawed away a statue of Admiral Doria – leaving the feet welded to the pedestal. (The statue is variously reported to be in a bar room in Norfolk, in a museum in Florida, or elsewhere.) Sport divers, additionally, visited the wreck both for the thrill and for souvenirs. At least two died, and Bass knows a third who was paralyzed by the bends from her 'ultimate dive'.

Clearly, saturation dives were necessary for any reasonably long visits to the ship. Alan Krasberg of Boston was the first when he used a two-man, towable, winch-itself-down underwater habitat in a 1968 'salvage' attempt.

'The habitat', Krasberg wrote to Searle in July 1987, 'was intended to be attached via a winch and wire rope to a locked toggle through a porthole near the promenade deck thru-way. Diver gas was carried on board.'

Luck was against Krasberg. Day after day high seas prevented his team from placing the toggle, and a diver/photographer for a news magazine almost died from what must have been an air embolism, requiring

immediate treatment in the expedition's combination habitat-decompression chamber. 'The next day the sea was flat calm at last', Krasberg continued, 'but we were now on our way back to shore with the man in the chamber.'

'All I have to show for it', he added by telephone, 'is half of one porthole and a sign from the ship that says "Men's Room".'

Nearly two decades later, saturation diving of the type used in offshore oil work allowed a team led by the late Peter Gimbel and his wife Elga Anderson to actually explore the *Doria's* interior. Gimbel had dived on the wreck the day after she went down, when he was only twenty-eight years old, not knowing that his curiosity about the tragedy would become an obsession to which he devoted much of the second half of his life. In 1985, with hundreds of tons of diving equipment mounted on an offshore supply vessel moored to four 3-ton anchors, Gimbel's divers remained under pressure for a month, lowered each day to the wreck in a 4-ton steel bell from which, attached to umbilicals bringing air and warmth, they cut a hole in the hull and swam inside. Although not an archaeological project, Gimbel's curiosity was the same kind of curiosity that drives the archaeologist. Did this virtually 'unsinkable' ocean liner truly go down because a crucial watertight door had been left open? Gimbel's well-organized and fully manned expedition confirmed that the door was open, but a 65-ft (19-m) gash he found in the *Doria's* hull made the question more or less academic, thus confirming the post-accident inquiries in the federal court in New York, as well as in the London insurance community.

Were rumors of fortunes stored in two of the *Doria's* safes true? The safe Gimbel raised contained paper money and certificates, but not the rumored fortune. Bass cannot believe, however, that Gimbel thought he could recoup from those safes the costs of the expedition he mounted. He is convinced it was a mixture of curiosity and challenge that pushed Gimbel on.

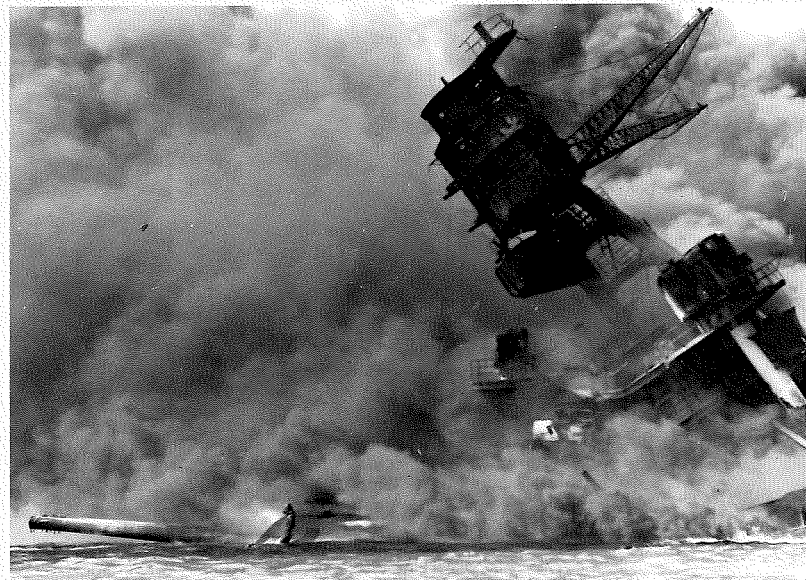
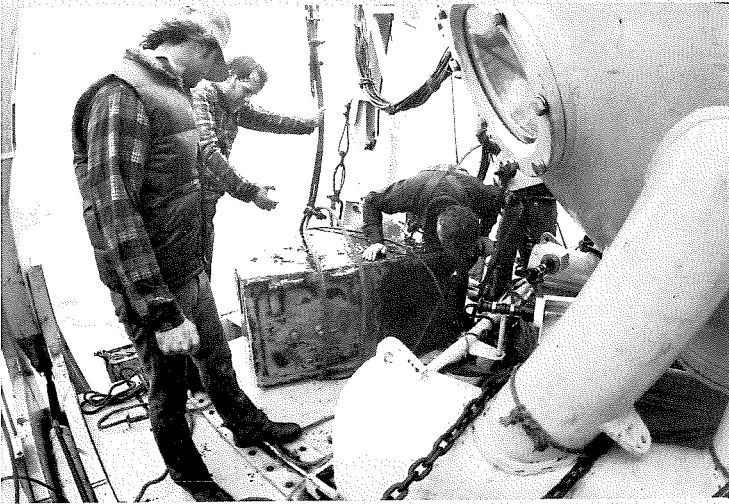
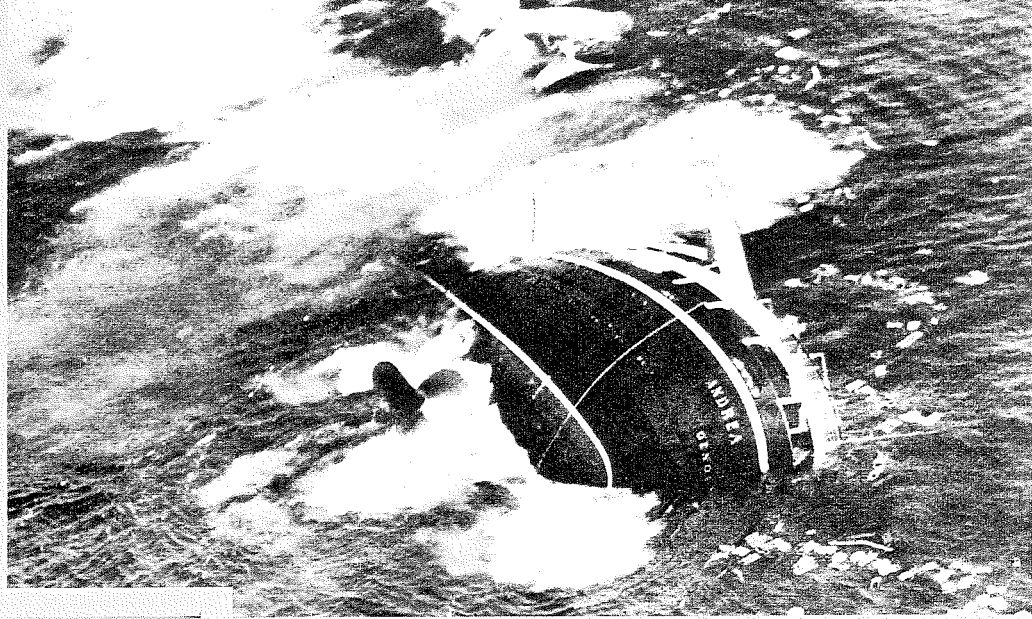
### Shipwrecks and Society

Shipwrecks in American waters can now, regardless of depth or temperature, be located and partly or completely recovered. This has led to intense interest in what happens to them, as shown by a sheaf of contemporary clippings sent by Searle to Bass:

'Divers Hope to Hoist Ship's Safe Tomorrow' (*Post-Intelligencer*, Seattle, Washington, 31 July 1987) and 'Ship Salvage Plan Draws Protest' (*The Daily News*, Longview, Washington, 27 July 1987), concerning objections by the Underwater Archaeological Society of British Columbia to a salvage team's plans to recover \$10 million in valuables from the *Governor* which sank in U.S. waters in 1921 with loss of life. 'Treasure Hunters Ordered Not to Damage Coral Reef' (*The Houston Post*, 25 July 1987): 'A federal judge refused Friday to allow a group of treasure hunters to tunnel into an already damaged Gulf of Mexico

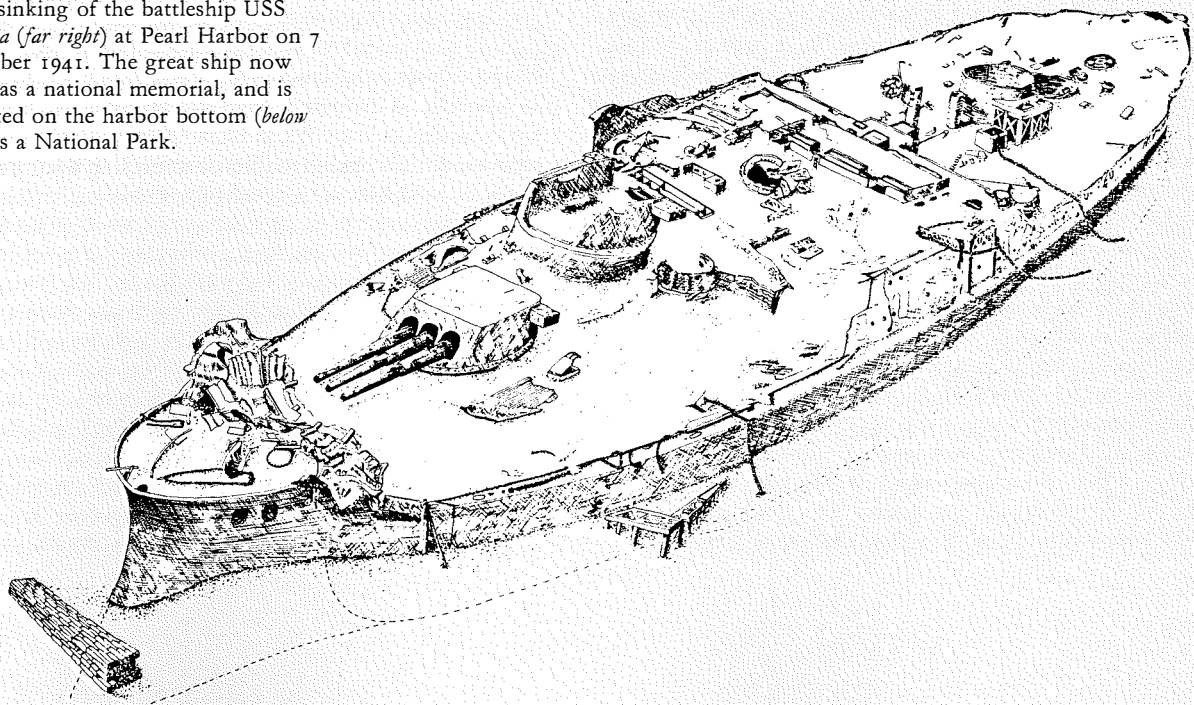
## *Last Moments of a Luxury Liner*

6, 7 On 25 July 1956, eleven hours after colliding with another liner, the *Andrea Doria* sank (*right*) 50 miles south of Nantucket Island. Thirty-four people died, and the wreck continues to claim victims as divers chance their luck on the ship, whose uppermost structure lies at 165 ft (50 m). In 1985 a saturation-diving team explored the *Doria's* interior and brought up the ship's safe (*below*) containing paper money but not the rumored fortune.



## *Death of a Battleship*

8, 9 Over 1,000 sailors lost their lives in the sinking of the battleship USS *Arizona* (*far right*) at Pearl Harbor on 7 December 1941. The great ship now serves as a national memorial, and is protected on the harbor bottom (*below right*) as a National Park.



coral reef in search of a sunken Spanish galleon that purportedly carried \$100 million in gold and other valuables.' 'Salvors Vie for Sunken Treasure off [sic] Central America' (*The Virginian-Pilot*, 9 July 1987), 'Treasure Hunters Claim \$450 Million Shipwreck' (*Washington Post*, 18 July 1987), and 'Ship Defies Court Order, Hunts Sunken Treasure' (*The Virginian-Pilot and the Ledger-Star*, 18 July 1987), all concerning the 1857 wreck of the sidewheel steamer *Central America*, lost during a hurricane on a voyage from Havana to New York. 'Controversial Titanic Expedition Delayed by Bad Weather, Intention to Salvage Artifacts from Wreck Called "Grave-Robbing"' (*Washington Post*, 25 July 1987) and, later, 'Inquiry On Titanic Jewels: Descendant of Victim May Claim Satchel' (*Washington Post*, 3 September 1987), the last raising insurance and other questions that eventually must be decided by courts of law.

The *Titanic*, especially, has roused strong emotions over the question of 'to-touch' or 'not-to-touch'. A bill was even introduced into the United States Senate that would have prevented import into the United States of any of the artifacts being raised from the vessel. But this is not an archaeological matter. The *Titanic* is no more an archaeological site than is the *Andrea Doria*, yet there have been no outcries about disturbing the latter. It is said that the *Titanic* should not be disturbed because lives were lost during her sinking, but such reasoning would put both salvors and nautical archaeologists out of business around the world. Presumably, then, the rationale for leaving the *Titanic* undisturbed is the same as that which led to the raising of private funds to save and restore New York's famed Carnegie Hall when it was destined to be torn down: some structures are simply so venerable that a sufficient segment of society wants them left intact for posterity.

Such respect for certain noteworthy vessels is warranted, regardless of their archaeological value. An example is the USS *Arizona*, sunk during the Japanese attack on Pearl Harbor in Honolulu on 7 December 1941. Three battleships – *West Virginia*, *Oklahoma* and *Arizona* – were sunk by dive bombers, fighters and torpedo planes that day, but the single greatest disaster was the loss of the USS *Arizona* with 1,102 sailors on board. Now protected as a National Park, the USS *Arizona* National Memorial includes a concrete and steel structure which spans the ship's remains as they lie on the bottom of Pearl Harbor. The park attracts over a million visitors annually.

Certainly not all World War II wrecks should become national monuments. The debate over historic preservation on land – Are we saving too much? Are we saving the right things? – must include historic preservation under water. It would seem wrong to allocate large sums for the preservation of one ship simply because she lies on the ocean floor, when an identical sister ship, rotting at her moorings, might legitimately and ethically be cut up and sold for scrap. Yet some preservationists seem still not to recognize this double standard.

With tens or even hundreds of thousands of wrecks in the Americas, the public may believe that this debate over what to save may be postponed, but such is not the case. Although only a fraction of existing wrecks warrant archaeological excavation, it is exactly that fraction – that attract treasure-hunters who are not motivated by the desire to recover and restore the past of the Americas. As pointed out in Chapter Three, all the known wrecks of the Age of Exploration were damaged by modern looters before archaeologists reached them.

An example of a wreck that *does* warrant scientific examination is the British frigate *Hussar*. At 3 pm on 23 November 1780 she struck Pot Rock in the gauntlet of reefs called Hell Gate in New York's East River, and finally sank at 7 pm several miles upstream in the Bay of Brothers at a depth of 42 ft (12.8 m). Some \$3 million in gold specie had supposedly been boxed and stored earlier beneath the ballast of the *Hussar* by a few trusted British tars; a new crew had then been recruited and only two officers notified of the existence of the gold. At Wallabout Bay in New York Harbor the *Hussar* was said to have taken on seventy American prisoners and an additional \$1.8 million in gold from the backup ship *Mercury*, before sailing up the East River.

After over 200 years and a score of treasure-hunting expeditions the mysteries of the *Hussar* remain unsolved: Did she have gold aboard at all, or was it transferred to the *Mercury*? If she took four hours to sink, did she tie up and unload the gold? Why, in those four hours, did not the 107 men reported lost save themselves, and why in that time were the American prisoners not released? The answers to these questions will be found only when a proper archaeological expedition is mounted at the Bay of Brothers.

Society must decide, then, which wrecks should be protected from commercial exploitation, just as society protects certain structures on land while others of equal vintage are razed. In some cases this is easy. We would not allow an entrepreneur to dismantle either Mount Vernon or the Alamo for private gain. Why, then, should a diver be allowed to dismantle one of Columbus' or La Salle's ships to sell or own for personal benefit? Some historic wrecks should be preserved through excavation and conservation; others should be preserved under water for the pleasure of future generations of visiting divers.

Society must also decide the cost it will bear in order to learn about and preserve the past. In the near future, new knowledge will continue to come from relatively shallow or even underground wrecks. Will archaeology be able to take advantage of the new technologies to search and work deeper? Only the tiniest fraction of the millions spent on the H-bomb search would ever be available for seeking an archaeological site under similar conditions. The United States was willing to pay the necessary millions of dollars for the *Titanic* search primarily because it provided a test of equipment with potential military

value. The cost of saturation diving on HMS *Edinburgh* was more than offset by the value of gold recovered.

Archaeologists will not come by such vast sums in their search for knowledge. Should deep wrecks then be left to entrepreneurs who might pay for their recovery through sales of artifacts? Or should they be saved for the future, when new techniques could lower costs of working at great depth?

Education must play a role in the study of whichever wrecks do warrant archaeological study. Although often commendable, some of the pioneering research described in this book was conducted by divers with only a smattering of historical knowledge, or by archaeologists with scant familiarity with ship design.

Nautical archaeology remains an infant branch of archaeology, however, and most projects described in the preceding chapters were conducted only within the past two decades. Meanwhile, the number of archaeologists capable of excavating and interpreting both land and underwater sites is growing, as evidenced by the authors of those chapters.

Over the years Bass' teams have learned, both in the Mediterranean and in the Caribbean, that for every month of diving, two years must be spent on the conservation of excavated artifacts, including entire hulls; on the cataloging, drawing and photographing of these finds; on library, archival and museum research; and on interpreting and publishing the discoveries. The nautical archaeologist need not be expert in every phase of this research, but must have sufficient training to choose and evaluate able assistants and colleagues in each area. And he or she must remember that the cost of conservation and restoration in true archaeological work usually exceeds the cost of diving, even on wrecks more than 150 ft (46 m) deep.

Humans being fallible, mistakes will be made in the attempt to draw distinctions between wrecks of social or historic significance and those of more commercial value. 'Significance' is in the eye of the beholder. Yet the public has agreed that looters should not be allowed to bulldoze any native American mounds for pottery to sell. The

### Postscript

Since the first publication of this book, discoveries have been made from almost every period covered. Early- to mid-sixteenth-century wrecks include two in the Bahamas, one off Cuba, and one, probably lost by Spanish explorer Tristan de Luna, off Florida. Later sixteenth-century wrecks include the Western Ledge Reef Wreck off Bermuda, and the Spanish galleon *Nuestra Señora del Rosario* off Cuba. English-built ships of the seventeenth century include one at Monte Cristi, Dominican Republic, and another, perhaps *H.M.S. Swan*, in the middle of the sunken city of Port Royal, Jamaica. An exciting discovery of that era is French explorer René La Salle's ship *La Belle* in Matagorda Bay, Texas. The *Land Tortoise*, a British

public should come to see historic monuments under water simply as historic monuments.

At the same time the public, and especially the news media, must recognize the difference between those who excavate historic ships for knowledge and those who recover them solely for monetary gain. The press too quickly bestows the title 'underwater archaeologist' on any diver who raises artifacts from the deep. There is a long and honorable tradition of salvage at sea, but it must not be confused with archaeology. Nor should legitimate salvors be confused with plunderers and pirates, as U.S. statute makes clear:

Whoever plunders, steals, or destroys any money, goods, merchandise, or other effects from or belonging to any vessel in distress, or wrecked, lost, stranded, or cast away, upon the sea, or upon any reef, shoal, bank or rocks of the sea, or in any other place within the admiralty and maritime jurisdiction of the United States, shall be fined not more than \$5,000 or imprisoned not more than ten years, or both. (18 U.S. Code 1658).

In the debate over historic shipwrecks, care must be given to truth. Bass has published a list of more than a dozen myths spread by treasure-hunters in order to justify their often destructive work: that they are 'saving' the wrecks from future storms; that they do not need to record or preserve the hulls they destroy while searching for treasure because detailed plans of galleons and other early ships exist in Spanish archives; that hulls in the New World are not as well preserved as those in the Mediterranean and thus deserve no special care; that the only way to pay for underwater survey and excavation is through the sale of artifacts; that duplicate artifacts have no archaeological value; that the only incentive for looking for and excavating early shipwrecks is monetary gain. Perhaps this book will put some of the myths to rest.

The quest for history is as exciting as any search for treasure. It is a quest that benefits us all. It is a quest that has begun in earnest in the waters of the Americas. It is a quest that will continue as long as we care about our past.

floating gun battery from the French and Indian War, was found in Lake George. Excavation of the Revolutionary War cofferdam wreck (*Betsy*) in the York River is completed, and a replica of the gunboat *Philadelphia* has sailed on Lake Champlain. From the War of 1812, research on the *Jefferson* in Lake Ontario is complete, and work has begun on the British brig *Linnet* and the American gunboat *Allen* in Lake Champlain. Hulls of early steamers *Water Witch* and *Champlain* have been studied in the latter lake, and the *Arabia*, recovered from the Missouri River, is another *Bertrand*. Located Civil War vessels include the steamer *Maple Leaf*, near Jacksonville, Florida, and the Confederate submarine *Hunley*, near Charleston.

# Glossary

- aft** toward the stern of a vessel
- amidships** middle portion of a ship lengthwise or crossways
- athwartships** from one side of a ship to the other; at right angles to the keel
- ballast** heavy material in a ship's hold to lower her center of gravity and provide greater stability when she carries little or no cargo
- bateau** (bateau) flat-bottomed double-ended boat
- batten** strip of wood used in shipbuilding to reproduce the curves of a vessel's hull
- beakhead** ship's head forward of the forecastle, forming a small deck over the stem
- beam** maximum width of a vessel; a horizontal transverse timber forming part of a ship's structure
- bergantin** a brig (Spanish)
- bilge** bottom of a ship's hull
- bonaventure mizzen** second mizzenmast on four-masted
- boom** spar to which is attached the foot of a fore-and-aft sail
- bow** forward part of a ship's side, from the point where the planks curve inwards to where they meet at the stem
- bower anchor** anchor permanently attached to a cable and stowed in the bow ready for use
- bowsprit** spar projecting forward of a sailing ship's stem
- brace** rope attached to the boom or yard of a sail, used to control its position; a metal strap used to strengthen the framework of a ship
- brig** two-masted square-rigger
- brigantine** two-masted sailing ship, rigged square on the foremast and fore-and-aft with square topsails on the mainmast
- bulkhead** vertical partition dividing a ship into sections
- bulwarks** sides of a vessel above the upper deck
- buttresses** short timbers placed on either side of the keelson and mast step to provide lateral support for the step
- caprail** timber atop the side planking of a vessel
- caravel** two- or three-masted sailing ship with broad beam, high poop-deck and lateen rig; used by Spanish and Portuguese in 15th and 16th centuries
- carrack** round-sterned merchant ship with distinctive triangular bow used in the Mediterranean in the 15th and 16th centuries
- carvel-built** having the planks all flush from keel to gunwale
- carvel planking** smooth seamed planking
- castle** tower or defensive post on the deck of a ship
- caulk** to stop up the seams between planks
- ceiling** internal planking of a ship's hull
- chine** angle at which the side and bottom of a hull join
- cleat** short projections of wood or metal, used for a variety of purposes
- clench** bending over and pounding down a bolt or nail
- clinker-built** said of a vessel whose planks run fore and aft, with the lower edge of one plank overlapping the upper edge of the plank below
- clipper** fast sailing ship with concave bow, fine lines and raked masts
- close to the wind** sailing as nearly as possible towards the compass point from which the wind is blowing
- composite ship** wooden ship with iron or steel framing
- deadeye** round or pear-shaped wooden block pierced by several holes, used mainly to secure the standing rigging
- deadwood** blocks of timber attached to top of keel to fill out narrow spaces in hull
- dhow** lateen-rigged Arab vessel with one or two masts, usually raked
- Down-Easter** large wooden square-rigger built on the coast of Maine in the late 19th century
- draft** (draught) the depth of water displaced by a vessel
- dunnage** brushwood or other material used to protect cargo
- fairlead** any fixture which leads a rope in the required direction
- filler** short plank set between frames on the outboard edge of the ceiling to close the gap between frames
- flukes** triangular extensions to the arms of an anchor
- fore** in the forward part of a vessel; towards the stem
- fore-and-aft rig** sails fitted in a fore-and-aft direction and secured on their forward side to a stay or mast
- forecastle** the raised, forward part of the upper deck, extending from the beakhead to the foremast or just aft of it; the seamen's quarters in a merchant ship
- forelock bolt** a bolt with a head at one end and, at the other, a slot through which a metal pin or key is thrust to lock the bolt in place
- foremast** forward mast in a vessel with two or more masts
- frames** athwartship timbers forming the internal skeleton of a ship
- freeboard** distance from the waterline up to the rail or gunwale
- frigate** medium-size square-rigged warship of the 17th through 19th centuries
- futtock** one of several members joined to form a frame
- gaff** spar used along the head of a fore-and-aft sail
- galleon** large sailing ship with three or more masts, lateen-rigged on the after masts and square-rigged on the foremast and mainmast; used as a warship or merchant ship in the 15th through 18th centuries
- galley** oared warship or merchant ship also propelled by sails
- garboard** first range of planks above a ship's keel
- gondola** large, flat-bottomed river or lake barge much like a bateau
- gudgeon** metal strap with eye, bolted to the sternpost to hold rudder pintle
- gunboat** a small, shallow-draft armed vessel
- gunwale** the upper edge of a ship's side
- half-deck** a deck above the main deck which does not continue the whole length of the vessel
- halyard** rope or tackle used for hoisting or lowering sails and a vessel's other top gear
- hawse-hole** hole in bow through which anchor cable passes
- hawser** a mooring rope or cable
- heel knee** timber connecting the keel to the sternpost
- helm** the apparatus by which the ship is steered, consisting of the rudder and a tiller or steering wheel
- hogging** the result of stress on a ship's hull making her droop at stem and stern while her middle arches
- hogging truss** a cable running fore and aft, to prevent hogging
- ironclad** a 19th-century warship sheathed with iron or steel plates
- kayak** a canoe made of skins stretched over and covering a wooden framework, except for an opening on top for the paddler
- keel** the lowest longitudinal timber, forming the backbone of a ship
- keelson** longitudinal timber of a ship, fixed above the frames and to the keel
- kenarr** broad-beamed Viking cargo vessel
- knee** a piece of timber having an angular bend, used to join two perpendicular members
- lapstrake** *see* clinker-built
- lateen sail** a triangular sail extended by a long tapering yard the lower end of which is brought down to the deck
- leeward** away from the wind; on the side sheltered from the wind
- lighter** boat used in port for transporting cargo between ship and quay
- limber boards** ceiling planks which can be removed for cleaning the bilges
- mainmast** principal mast; chief mast in two-masted vessel; center mast in a three-masted vessel; second mast from stem in others
- man-o'-war** warship
- mast cap** two-hole fitting which holds an upper mast in one hole the top of a lower mast which fits in the hole
- mast partner** fitting at deck level to provide additional support for a mast
- mast step** socket for the heel of a mast; an attachment for fastening the lower end of a ship's mast to the hull
- mastercouple** the midship frame, usually at the widest part of a vessel
- mizzenmast** the mast directly aft of the mainmast
- mold mark** raised line of metal left on shot at the juncture of the two halves of the shot mold
- nao** merchant ship square fore-, main- and sprit-sails and a lateen on its mizzenmast
- orlop deck** lowest deck in a warship, laid over the beams of the hold
- packet** 18th-century vessels named after the packets of mail they carried, but from 1818 merchant ships with regular schedules over fixed routes
- parral** collar by which a yard is fastened to the mast
- parral beads** wooden beads strung together to facilitate the smooth movement of a parral
- pinnace** open, general-service vessel propelled by oars or sails
- pintle** vertical bolt at the back of the rudder which fits into a gudgeon on the sternpost to form a hinge
- privateer** a privately owned warship under license to the government
- pro** pointed forward end of a ship
- rabbit** deep groove or channel cut into a piece of timber to receive the edge of a plank
- ribs** curved frame-timbers of a ship, to which the sideplanking is nailed
- rigging** system of ropes used to support the masts and operate the sails
- rove** small plate or ring on which the point of a nail or rivet is beaten down
- row galley** early 19th-century term for small oar- and sail-powered warships
- rubbing strikes** heavy protective side timbers on a ship
- scantlings** dimensions of any piece of timber used in shipbuilding
- scarf** lapped joint connecting two timbers or planks
- schooner** sailing vessel with two or more masts, with all lower sails rigged fore-and-aft
- shank** shaft forming the principal part of an anchor, connecting the arms to the stock
- sheave** the wheel of a block
- sheet** rope controlling the after (lower) corner(s) of a sail
- ship-of-the-line** warship mounting 50 or more guns
- shrouds** heavy ropes that brace the mast athwartships
- sloop** originally a single-masted vessel rigged fore and aft with a mainsail and sometimes topsails and a war vessel, larger

than a gunboat, with guns mounted on a single deck  
**snag** submerged tree stump or branch dangerous to navigation  
**snag boat** steamboat designed to remove snags  
**spar** rounded length of timber such as a yard, gaff or boom  
**spike** heavy nail  
**sponson** structure projecting over the side of a vessel  
**spritsail** small auxiliary sail at the forward end of a ship  
**sprue mark** mark left on cast object where the metal column formed in the entry canal to the mold has been removed  
**square-rigged** said of a vessel rigged with square sails  
**square-sail** four-cornered sail set on a yard athwartships

**stays** strong ropes to support the mast fore and aft  
**steamship** ship propelled by a steam engine  
**stem** timber forming the front extremity of a vessel  
**stern** rear end of a vessel  
**sternpost** timber at the extreme rear end of a vessel and extending from the keel to deck level or above  
**stock** heavy cross-bar of an anchor  
**strake** one row of planking on the side or bottom of a ship  
**stringer** heavy inside strake secured to the frames  
**tack** forward lower part of a sail  
**thole** wooden or metal pin or peg inserted singly or in pairs in a vessel's gunwale to hold and guide an oar  
**thwart** cross seat in an open boat  
**tiller** lever for controlling a ship's rudder or steering gear  
**tompson** object, usually wooden, placed in the

mouth of a breech chamber to keep the powder dry, or in a gun's muzzle to protect it from corrosion  
**transom** athwartship timber attached to the sternpost  
**treenail** cylindrical wooden fastening  
**trunnel** colloquial term for treenail; also trennel  
**tryworks** place for rendering, or melting out, fat or blubber  
**tumblehome** the sloping-in of a vessel's topsides above the point of greatest width  
**umiak** large open boat made of skins stretched on a wooden framework  
**wales** horizontal planks heavier than the rest, extending along the whole of a ship's sides  
**yard** horizontal athwartships spar fitted to the forward side of the mast, to support square sails

## Brief Guide to Museums and Research Institutes

### GENERAL

**Calvert Marine Museum**  
P.O. Box 97, Solomons, MD 20688  
**Chesapeake Bay Maritime Museum**  
St Michaels, MD 21663  
**Columbia River Maritime Museum**  
Astoria, OR 97103  
**The Great Lakes Historical Society**  
480 Main St, Vermilion, OH 44089  
**Maine Maritime Museum**  
963 Washington St, Bath, ME 04530  
**The Mariners' Museum**  
Newport News, VA 23606  
**M.I.T. Museum and Historical Collection**  
Hart Nautical Collection, 265 Massachusetts Avenue, Cambridge, MA 02139  
**Peabody Museum of Salem**  
East India Marine Hall, Salem, MA 01970  
**Philadelphia Maritime Museum**  
321 Chestnut St, Philadelphia, PA 19106  
**The Smithsonian Institution**  
National Museum of American History, Washington, D.C. 20560  
**Vancouver Maritime Museum**  
1905 Ogden St, Vancouver, British Columbia, V6J 3J9 Canada

### CHAPTER ONE

**The Cleveland Museum of Natural History**  
Wade Oval, University Circle, Cleveland, OH 44106  
For *Ringler dugout canoe*  
**Museo Nacional de Antropología e Historia**  
Paseo de la Reforma y Ghandi, Mexico 5, D.F., Mexico  
For *Aztec dugout canoe*

### CHAPTER TWO

**Comision de Rescate Arqueologico Submarino**  
Museo de las Casas Reales, Calle las Damas Esq. Mercedes, Santo Domingo, Dominican Republic  
Responsible for *underwater archaeology*

### CHAPTER THREE

**Armed Forces History Collection**  
National Museum of American History, The Smithsonian Institution, Washington, D.C. 20560  
Houses artifacts from the *Highborn Cay wreck*  
**The CEDAM Museum**  
Xelha, Quintana Roo, Mexico  
Displays artifacts from the *Babia Mujeres wreck*  
**Departamento del Arqueología Subacuática**  
Museo Nacional de Antropología e Historia, Paseo de la Reforma Ghandi, Mexico 5, D.F., Mexico  
Responsible for *archaeology in Mexico*

**Institute of Nautical Archaeology**  
P.O. Drawer HG, College Station, TX 77841  
Conducts research on ships of exploration  
**The Mariners' Museum**  
Newport News, VA 23606  
Houses artifacts from the *Highborn Cay wreck*

### CHAPTER FOUR

**Basque Whaler Project**  
Department of Indian and Northern Affairs, 1600 Liverpool Court, Ottawa, Ontario KIA OH4, Canada  
Conducts *Red Bay research*

### CHAPTER FIVE

**Archaeological Research**  
Division of Historical Resources, Florida Department of State, R. A. Gray Building, Tallahassee, FL 32399-0250  
Supervises *shipwreck archaeology*  
**Bermuda Maritime Museum**  
P.O. Box 273, Somerset, Bermuda  
For *'San Pedro' and 'San Antonio'*  
**Corpus Christi Museum**  
1900 North Chaparral, Corpus Christi, TX 78041  
For *remains of Padre Island wrecks*  
**McLarty State Museum**  
Sebastian Inlet State Park, Sebastian, FL  
For *1715 Spanish plate fleet*  
**Museo de las Casas Reales**  
Calle las Damas Esq. Mercedes, Santo Domingo, Dominican Republic  
For *remains of 'Concepcion', 'Tolosa', and 'Guadalupe'*  
**Museo Regional**  
Campeche, Mexico  
For *Cayo Nuevo shipwreck*  
**Museo Servicio do Documentacao do Geral da Marinha**  
Rio de Janeiro, Brazil  
For *'Sacramento'*  
**Museum of Florida History**  
R. A. Gray Building, Tallahassee, FL  
For *1715 Spanish plate fleet*  
**St Lucie County Historical Museum**  
Ft Pierce, FL  
For *1715 Spanish plate fleet*  
**Treasure Salvors, Inc. Museum**  
Key West, FL  
For *'Nuestra Señora de Atocha'*

### CHAPTER SIX

**Bermuda Maritime Museum**  
P.O. Somerset, Bermuda  
For *'Sea Venture'*

**Jamestown Festival Park**  
P.O. Drawer JF, Williamsburg, VA 23187  
For *replicas of 'Susan Constant', 'Godspeed' and 'Discovery'*  
**The Mariners' Museum**  
Newport News, VA 23606  
For *remains of Ronson ship*  
**Philadelphia Maritime Museum**  
321 Chestnut Street, Philadelphia, PA 19106  
**Pilgrim Hall Museum**  
Court St, Plymouth, MA 02360  
For *bull remains of 'Sparrow Hawk'*  
**Plimoth Plantation**  
P.O. Box 1620, Plymouth, MA 02360  
For *replicas of 'Mayflower' and shallop*  
**Port Royal Museum**  
Port Royal, Jamaica  
**Port Royal Project**  
Nautical Archaeology Program, Texas A&M University, College Station, TX 77843  
Excavates *Port Royal and conducts summer field school*  
**South Carolina Institute of Archaeology**  
University of South Carolina, Columbia, SC 29208  
For *information about Brown's Ferry wreck and underwater archaeology in the state*

### CHAPTER SEVEN

**Adirondack Museum**  
Blue Mountain Lake, NY  
Displays *Lake George bateau*  
**Basin Harbor Maritime Museum**  
Basin Harbor, VT 05491  
Exhibit of *Lake Champlain's history; also full scale replica of Lake George bateau*  
**Champlain Maritime Society**  
P.O. Box 745, Burlington, VT 05402  
**Machault Museum**  
Restigouche, Quebec  
Artifacts and *bull remains of 'Machault'*

### CHAPTER EIGHT

**Armed Forces History Collection**  
National Museum of American History, Smithsonian Institution, Washington, D.C. 20560  
For *'Philadelphia'*  
**Daughters of the American Revolution Museum**  
1776 D Street, N.W., Washington, D.C. 20006-3392  
For *'Augusta'*  
**Maine State Museum**  
State House Station 83, Augusta, ME 04333  
For *artifacts from 'Defence'*  
**The Mariners' Museum**  
Newport News, VA 23606  
For *artifacts from York River wrecks*  
**Research Center for Archaeology**  
Division of Historic Landmarks, Commonwealth of Virginia, P.O. Box 424, Yorktown, VA 23690



**Yorktown Visitor Center**  
Colonial National Historical Park, P.O. Box 210,  
Yorktown, VA 23690  
For *Yorktown wrecks*

## CHAPTER NINE

**Hamilton-Scourge Foundation**  
71 Main Street, Hamilton, Ontario L8N 3T4,  
Canada  
**Historic Naval and Military Establishments**  
Huron Historical Parks, P.O. Box 160, Midland,  
Ontario L4R 4K8, Canada  
*Remains of the 'Tecumseth' and naval ship*  
**Historic Naval and Military Establishments**  
P.O. Box 1800, -C.P.1800, Penetanguishene,  
Ontario L0K 1P0, Canada  
**Marine Museum of Upper Canada**  
Toronto Historical Board, Exhibition Place,  
Toronto, Ontario M6K 3C3, Canada  
*Model of the 'Nancy' and other 1812 material*  
**Nancy Island Historic Site**  
c/o Wasaga Beach Provincial Park, Wasaga Beach,  
Ontario, Canada  
*Remains of 'Nancy'*  
**Sackets Harbor Historic Site**  
Sackets Harbor, NY  
*Exhibits describe U.S. Naval base*  
**U.S. Flagship Niagara Museum**  
Eric, PA  
*Restored 20 gun brig 'Niagara'*  
**U.S. Frigate Constellation**  
Constellation Dock, Baltimore, MD 21202  
**U.S.S. Constitution Museum**  
Box 1812, Boston, MA 02129  
*Also displays 18th- and 19th-century shipbuilding*

## CHAPTER TEN

**City Hall**  
Kaslo, British Columbia, Canada  
For *'Mayie' (1898, steam-sternwheel)*  
**Duluth, Missabe & Iron Range Railway Co.**  
Duluth, MN 55801  
For *'Edna G.' (1896, steam-screw)*  
**Historic Ships Unit**  
Golden Gate National Recreation Area,  
2905 Hyde St, San Francisco, CA 94109  
For *'Eureka' (side-wheel ferry)*  
**The Howard National Steamboat Museum**  
1101 E. Market St, Jeffersonville, IN 47130  
*Models, pictures, shipyard tools*  
**Inland Rivers Library**  
8th and Vine Streets, Cincinnati, OH 45202  
**Maine Maritime Museum**  
963 Washington St, Bath, ME 04530  
For *'Seguin' (1884, steam-screw)*  
**The Missouri Historical Society**  
Jefferson Memorial Building, St Louis, MO 63112

**Sons and Daughters of Pioneer Rivermen**  
89 Park St, Canal Winchester, OH 43110  
**Steamship Historical Society of America**  
414 Pelton Avenue, Staten Island, NY 10310  
**Steamboat Photo Company**  
121 River Avenue, Sewickley, PA 15143  
**Vermont State Underwater Historic Preserve**  
*Established over wreck of the 'Phoenix'*  
**Visitor Center, Fish and Wildlife Service**  
Desoto National Wildlife Refuge, U.S. Department  
of the Interior, RR 1, Box 114, Missouri Valley,  
IA 51555  
For *artifacts from 'Bertrand'*

## CHAPTER ELEVEN

**Calvert Marine Museum**  
P.O. Box 97, Solomons, MD 20688  
**Caswell Neuse Historic Site**  
Kingston, NC  
*Remains of C.S.S. Neuse and associated collection*  
**Confederate Museum**  
St Georges, Bermuda  
*Small collection of artifacts associated with blockade  
running*  
**Confederate Naval Museum**  
201 4th St, P.O. Box 1022, Columbus, GA 31902  
*Displays C.S.S. 'Chattahoochee' and C.S.S.  
'Jackson'/'Muscong'*  
**The Mariners' Museum**  
Newport News, VA 23606  
*Curates artifacts from U.S.S. 'Monitor' National Marine  
Sanctuary*  
**Museum of the Confederacy**  
Richmond, VA  
*Curates artifacts associated with Civil War naval  
activities*  
**National Maritime Museum**  
Greenwich, England  
*Plans of blockade runner 'Ella' and other ships register  
documents*  
**New Hanover County Museum**  
Wilmington, NC  
*Displays of Wilmington and Fort Fisher during Civil  
War (dioramas with ship models)*  
**North Carolina Division of Archives and  
History**  
109 E. Jones St, Raleigh, NC  
*Curates artifacts from blockade runners with additional  
collections at: Fort Fisher State Historic Site, Kure  
Beach, NC*  
**North Carolina Maritime Museum**  
315 Front St, Beaufort, NC 28516  
**Program in Maritime History**  
Department of History, East Carolina University,  
Greenville, NC 27843  
**The Science Museum**  
South Kensington, London, England  
*Ericsson patent model of U.S.S. 'Monitor's' engine*

**Vicksburg National Military Park**  
Box 349, Vicksburg, MS 39180  
*Displays U.S.S. 'Cairo'*

## CHAPTER TWELVE

**Bernice P. Bishop Museum**  
P.O. Box 19000-A, Honolulu, Hawaii 96819  
For *'Falls of Clyde' (1878)*  
**Chesapeake Bay Maritime Museum**  
P.O. Box 636, St Michaels, MD 21663  
For *'Edna E. Lockwood' (1889)*  
**Great Britain Foundation**  
Great Western Dock, Gas Ferry Road, Bristol,  
England  
For *'Great Britain' (1843)*  
**The Kendall Whaling Museum**  
P.O. Box 297, Sharon, MA 02067  
**Maine Maritime Museum**  
963 Washington St, Bath, ME 04530  
*Displays remains of 'George R. Sheafield'*  
**Maritime Museum Association of San Diego**  
1306 North Harbor Drive, San Diego, CA 92101  
For *'Star of India' (1863)*  
**Mystic Seaport Museum**  
Mystic, CT 06355  
For *'Charles W. Morgan' and whaling history, and other  
historic vessels*  
**National Maritime Museum of San Francisco**  
Golden Gate National Recreation Area,  
San Francisco, CA 94123  
For *holdings of 'Niantic'*  
**Old Dartmouth Historical Society Whaling  
Museum**  
18 Johnny Cake Hill, New Bedford, MA 02740  
**The Peabody Museum of Salem**  
East India Square, Salem, MA 01970  
**Philadelphia Maritime Museum**  
321 Chestnut St, Philadelphia, PA 19106  
**Ships of the Sea Museum**  
503 East River St, Savannah, GA 31401  
**South Street Seaport Museum**  
207 Front St, New York, NY 10038  
**Spring Point Museum**  
SMVTI, Fort Rd, South Portland, ME 04106  
*Displays bow of extreme clipper 'Snow Squall'*

EPILOG

**U.S. Naval Academy Museum**  
Annapolis, MD 21402  
**U.S. Navy Memorial Museum**  
Bldg 76, Washington Navy Yard, Washington,  
D.C.  
**U.S.S. Arizona Memorial Park**  
Honolulu, Hawaii 96818  
**Woods Hole Oceanographic Institution**  
Woods Hole, MA 02543  
For *information on 'Titanic'*

## Sources of Quotations

CHAPTER ONE p. 19, col. 2, l. 23-31:  
Columbus, C., *The Journal*, 1960; p. 19, col. 2, l.  
40-49: author's trans.; p. 20, col. 1, l. 13-16:  
author's trans.; p. 20, col. 2, l. 7-11: author's trans.;  
p. 22, col. 2, l. 28-38: Columbus, F., 1959; p. 28, col.  
1, l. 13-22: Benzoni, G., 1858.  
CHAPTER TWO p. 33, col. 1, l. 16-19:  
Columbus, C., 1960; p. 33, col. 2, l. 28-29:  
Columbus, F., 1959; p. 38, col. 1, l. 40-41:  
Columbus, C., 1960; p. 40, col. 2, l. 6-8: *ibid.*; p. 40,  
col. 2, l. 20-29: Columbus, F., 1959.  
CHAPTER SEVEN p. 130, col. 2-l. 26, p. 132,  
col. 1, l. 4: Kalm, P., 1972; p. 132, col. 1, l. 6-11:  
*ibid.*  
CHAPTER EIGHT p. 149, col. 1, l. 37-col. 2, l.  
13: Oswald, R., 'General Observations Relative to the  
Present State of the War, London, August 9,  
1779', ff. 63-64, William L. Clements Library,  
University of Michigan; p. 149, col. 2, l. 31-p. 150,

col. 1, l. 16: Germaine, Lord G., to Sir H. Clinton,  
Whitehall, 8 March 1778, CO 5/95, ff. 35-49,  
Public Record Office, London; p. 150, col. 1, l.  
21-23: Oswald, R., *op. cit.*, p. 60; p. 150, col. 2, l.  
40-43: *The Whalemens' Shipping List*, New Bedford,  
Mass., 30 Nov. 1869; p. 163, col. 1, l. 27-35:  
Tucker, St G., 'Diary of the Siege of Yorktown',  
*William and Mary Quarterly*, 3rd series, vol. 5 (1948)  
391; p. 163, col. 2, l. 15-26: Thacher, J., *A Military  
Journal during the American Revolutionary War, from  
1775 to 1783*, Boston, Cottons & Barnard 1827, 283.  
CHAPTER NINE p. 183, col. 1, l. 18-25: U.S.  
Archives Record Group 45.  
CHAPTER ELEVEN p. 209, col. 1, l. 7-10:  
Selfridge, T., *Memories of Thomas O. Selfridge, Jr.  
Rear-Admiral U.S.N.*, New York, Putnam 1924; p.  
209, col. 1, l. 14-18: Parker, 1883; p. 209, col. 1, l.  
32-col. 2, l. 6: Greene, S. D., 'An Eyewitness  
Account: I Fired the First Gun and Thus

Commenced the Great Battle', *American Heritage* 8,  
June 1957; p. 214, col. 2, l. 19-22: Bearss, 1966; p.  
218, col. 1, l. 11-16: 'Operations of the North  
Atlantic Blockading Squadron from October 28,  
1864, to February 1, 1865', in *The Official Records of  
the Union and Confederate Navies in the War of the  
Rebellion*, Washington D.C. 1894-1922, vol. 11; p.  
220, col. 2, l. 21-24: Jones, 1961, vol. 2, 375; p. 221,  
col. 1, l. 26-col. 2, l. 2: Turner, M., *Navy Gray: A  
Story of the Confederate Navy on the Chattahoochee  
River*, Confederate Navy Museum, Columbus,  
Georgia; p. 224, col. 2, l. 1-2: Burnside, A. E.,  
*Battles and Leaders of the Civil War*, The Century  
Press, New York, NY 1887, vol. 1, 663; p. 230, col.  
2, l. 3-9: Dahlgren, M. V., *Memoires of John A.  
Dahlgren, Rear Admiral United States Navy*, Boston  
1882.

# Further Reading

## Abbreviations

IJNA	<i>International Journal of Nautical Archaeology</i>
JFA	<i>Journal of Field Archaeology</i>
MPMAE	<i>Memoirs of the Peabody Museum of Archaeology and Ethnology</i>
NG	<i>National Geographic</i>

## CHAPTER ONE

### The Earliest Watercraft

- ADNEY, E. T. AND H. I. CHAPPELLE, *The Bark Canoes and Skin Boats of North America*, Smithsonian Institution, Washington, D.C. 1964.
- ASHE, G., 'Analysis of the Legends', in Ashe, G. (ed.), *The Quest for America*, London 1971, 15–52.
- BENSON, E. P. (ed.), *The Sea in the Pre-Columbian World*, *Dumbarton Oaks Research Library and Collections*, Washington, D.C. 1977.
- BENZONI, G., *History of the New World by Girolamo Benzoni of Milan Showing his Travels in America, from AD 1541–1556*, ed. and trans. by W. H. Smyth, Hakluyt Society, London 1858.
- BLOM, F., 'Commerce, Trade and Monetary Units of the Maya', *Middle American Research Series Publication* 4, Tulane University, New Orleans, LA 1932.
- BRAY, W., *The Gold of El Dorado*, London 1978.
- BROSE, D. S. AND I. GREBER, 'An Archaic Dugout from Savannah Lake, Ohio', *Midcontinental Journal of Archaeology* 7 (1982) 245–282.
- BULLEN, R. P. AND H. K. BROOKS, 'Two Ancient Florida Dugout Canoes', *Quarterly Journal of the Florida Academy of Sciences* 30 (1967) 97–107.
- CLAIBORNE, R., *The First Americans, New York 1973*.
- CODEx MENDOZA, *Codex Mendoza: The Mexican Manuscript, Known as the Collection of Mendoza and Preserved in the Bodleian Library, Oxford*, 3 vols, ed. and trans. by J. C. Clark, London 1938.
- COLUMBUS, C., *The Journal of Columbus*, abs. by B. de Las Casas and trans. by C. Jane, New York 1960.
- Select Letters of Christopher Columbus with Other Original Documents Relating to His Four Voyages to the New World*, ed. and trans. by R. H. Major, Hakluyt Society, London 1870; repr. New York 1961.
- Select Documents Illustrating the Four Voyages of Columbus Including those Contained in R. H. Major's Select Letters of Christopher Columbus I*, ed. and trans. by C. Jane, Hakluyt Society, London 1930; repr. Krause Reprints, Germany 1967.
- COLUMBUS, F., *The Life of the Admiral Christopher Columbus by His Son Ferdinand*, trans. and annot. by B. Keen, New Jersey 1959.
- CORTÉS, H., *Letters of Cortés (the Five Letters of Relation from Fernando Cortés to the Emperor Charles V)*, 2 vols, trans. by F. A. MacNutt, New York and London 1908.
- CUSHING, F. H., 'A Preliminary Report on the Exploration of Ancient Key-Dweller Remains on the Gulf Coast of Florida', *Proceedings of the American Philosophical Society* 35 no. 135, Philadelphia, PA 1897.
- DE BOOY, T., 'Lucayan Artifacts from the Bahamas', *American Anthropologist* 15 (1913) 1–7.
- DE LANDA, DIEGO *Yucatan Before and After the Conquest*, trans. by W. Gates, New York 1978.
- DÍAZ DEL CASTILLO, BERNAL, *The Discovery and Conquest of Mexico 1517–1521*, ed. by G. García and trans. by A. P. Maudslay, New York 1956.
- DURÁN, DIEGO, *The Aztecs: The History of the Indies of New Spain*, trans. by D. Hayden and F. Horcasitas, New York 1964.
- EDWARDS, C. R., 'Aboriginal Sail in the New World', *Southwest Journal of Anthropology* 21 (1965) 351–358.
- Aboriginal Watercraft on the Pacific Coast of South America*, Berkeley and Los Angeles 1965.
- 'Possibilities of Pre-Columbian Maritime Contacts

- among New World Civilizations', *Latin American Center Pamphlet Series* 8, University of Wisconsin, Milwaukee, WI 1970.
- 'Pre-Columbian Maritime Trade in Mesoamerica', *Papers of the New World Archaeological Foundation* 40 (1978) 199–209.
- FARRIS, N. M. AND A. G. MILLER, 'Maritime Culture Contact of the Maya: Underwater Surveys and Test Excavation in Quintana Roo, Mexico', *IJNA* 6 (1977) 141–151.
- GIDDINGS, J. L., *Ancient Men of the Arctic*, New York 1967.
- GRIEDER, T., 'Periods in Pecos Style Pictographs', *American Antiquity* 31 (1966) 710–720.
- HAMMOND, N., 'Classic Maya Canoes', *IJNA* 10 (1981) 173–185.
- HARRINGTON, J. P., *Tomol: Chumash Watercraft as Described in the Ethnographic Notes of John P. Harrington*, ed. and annot. by T. Hudson, J. Timbrook and M. Rempe, Socorro 1978.
- HORNELL, J., *Water Transport: Origins and Early Evolution*, Cambridge (England) 1946.
- INGSTAD, H., 'Norse Explorers', in Ashe, G. (ed.), *The Quest for America*, London 1971, 96–112.
- 'Norse Sites at L'Anse aux Meadows', in Ashe, G. (ed.), *The Quest for America*, London 1971, 175–197.
- JOHNSTONE, P., *The Sea-Craft of Prehistory*, ed. by Sean McGrail, London and Cambridge, MA 1980.
- KANDARE, R. P., 'Mississippian Dugout Canoes and the Moundville Phase', MA thesis, University of Arkansas 1983.
- LAING, A., *American Ships*, New York 1971.
- LESHIKAR, M. E., 'The Mexica Canoe: An Archaeological and Ethnohistorical Study of its Design, Uses, and Significance', MA thesis, University of Texas at Austin 1982.
- 'Construction of a Dugout Canoe in the Parish of St Ann, Jamaica', *Proceedings of the Sixteenth Conference on Underwater Archaeology*, Johnston, P. F. (ed.), *Society for Historical Archaeology Special Publication Series* 4 (1985) 48–51.
- LOTHROP, S. K., 'Metals from the Cenote of Sacrifice, Chichén Itzá, Yucatan', *MPMAE* 10 no. 2, Cambridge, MA 1952.
- LOVEN, S., *Origins of the Tainan Culture, West Indies*, Göteborg 1955.
- LUCE, J. V., 'Ancient Explorers', in Ashe, G. (ed.), *The Quest for America*, London 1971, 53–95.
- MCFEAT, T. (ed.), *Indians of the North Pacific Coast*, Seattle and London 1966.
- MCGHEE, R., 'Contact between Native North Americans and the Medieval Norse: A Review of the Evidence', *American Antiquity* 49 (1984) 4–26.
- MCKUSICK, M. B., 'Aboriginal Canoes in the West Indies', *Yale University Publications in Anthropology* 63 (1960) 3–11.
- MARCUS, G. J., *The Conquest of the North Atlantic*, New York and Oxford 1981.
- MEGGER, B. J., 'Contacts from Asia', in Ashe, G. (ed.), *The Quest for America*, London 1971, 239–259.
- Prehistoric America*, Chicago 1972.
- MORRIS, E. H., J. CHARLOT AND A. A. MORRIS, *The Temple of the Warriors at Chichén Itzá, Yucatan*, 2 vols, Carnegie Institution of Washington Publication 406, Washington, D.C. 1931.
- OLSEN, O. AND O. CRUMLIN-PEDERSEN, *The Skuldelev Ships*, repr. from *Acta Archaeologica* 38 (1967) Copenhagen.
- Five Viking Ships from Roskilde Fjord*, The National Museum, Copenhagen 1978.
- OLSON, R. L., *The Quinault Indians and Adze, Canoe, and House Types of the Northwest Coast*, Seattle and London 1967.
- PHILLIPS, P. AND J. A. BROWN, *Pre-Columbian Shell Engravings from the Craig Mound at Spiro, Oklahoma*, Cambridge, MA 1978.
- SAHAGÚN, BERNARDINO DE, *Varenine Codex*, 12

- vols, trans. by A. J. O. Anderson and C. E. Dibble, The School of American Research and the University of Utah, Santa Fe, NM 1950–1969.
- STEWART, J. H. (ed.), *Handbook of South American Indians*, 7 vols, New York 1963.
- STURTEVANT, W. C. (ed.), *Handbook of North American Indians*, Washington, D.C. 1978.
- THOMPSON, J. E. S., 'Canoes and Navigation of the Maya and their Neighbors', *Journal of the Royal Anthropological Institute* 79 (1949) 69–78.
- TLAXCALA, L. DE, *Antigüedades mexicanas, publicadas por la Junta Colombina de México*, Mexico 1892.
- TOZZER, A. M., 'Chichén Itzá and its Cenote of Sacrifice', *MPMAE* 11 and 12, Cambridge, MA 1957.
- VEGA, G. DE LA, *The Florida of the Inca*, ed. and trans. by J. G. and J. J. Varner, Austin 1980.
- WATERMAN, T. T. AND G. COFFIN, 'Types of Canoes on Puget Sound', *Indian Notes and Monographs*, Heye Foundation, New York 1920.
- WAUCHOPE, R. (ed.), *Handbook of Middle American Indians*, 16 vols, Austin 1964–1984.
- WAUGH, F. W., 'Canadian Aboriginal Canoes', *The Canadian Field Naturalist* 33 no. 2 (1919) 23–35.
- WEST, R. C., 'Aboriginal Sea Navigation Between Middle and South America', *American Anthropologist* 63 (1961) 133–135.

## CHAPTER TWO

### The Voyages of Columbus

- Columbus*
- COLUMBUS, C., *The Journal* see Ch. 1.
- COLUMBUS, F., see Ch. 1.
- HARRISSE, H., *Christophe Colomb, son origine, sa vie, ses voyages, sa famille et ses descendants*, 2 vols, Ernest Leroux, Paris 1884–85.
- LANDSTRÖM, B., *Columbus*, New York 1966.
- LINES, J. A., *Colección de documentos para la historia de Costa Rica relativos al cuarto y último viaje de Cristóbal Colón*, Academia de Geografía e Historia de Costa Rica, San José 1952.
- MORISON, S. E., *Admiral of the Ocean Sea. A Life of Christopher Columbus*, 2 vols, Boston, MA 1942.
- Journals and Other Documents on the Life and Voyages of Christopher Columbus*, New York 1963.
- NUNN, G. E., *The Geographic Conceptions of Columbus*, American Geographical Society, New York 1924.
- Columbus' Ships*
- ALBERTIS, E. A. D', *La costruzione navali e l'arte della navigazione al tempo di Cristoforo Colombo*, Ministero della Pubblica Istruzione, Rome 1893.
- CONCAS Y PALAU, *La nao historica Santa Maria en la celebración del IV centenario del descubrimiento de América*, Imprenta Alemana, Madrid 1914.
- ETAYO ELIZONDO, C., *La 'Santa María', la 'Niña', y la 'Pinta'*, Gráficas Iruña, Pamplona 1962.
- FERNÁNDEZ DURO, C., *La nao Santa María, memoria de la Comisión Arqueológica Ejecutiva*, El Progreso Editorial, Madrid 1892.
- GULLÉN Y TATO, J. F., *La carabela Santa María, apuntes para su reconstrucción*, Ministerio de Marina, Madrid 1927.
- MARTÍNEZ-HIDALGO, J. M., *Las naves de Colón*, Museo Marítimo, Barcelona 1969.
- A bordo de la 'Santa María'*, Museo Marítimo, Barcelona 1976.
- MARX, R. F., *The Voyage of the Niña II*, Cleveland, OH 1963.
- WINTER, H., *Die Kolumbusschiffe*, Robert Loef Verlag, Magdeburg 1944.
- Columbus' Shipwrecks*
- FRYE, J., *The Search for the Santa María*, New York 1973.
- GODWIN, S. B., *Spanish and English Ruins in Jamaica*, Boston, MA 1946.

LINK, M. C., *Sea Diver. A Quest for History Under the Sea*, New York 1958.  
 MORISON, S. E. and M. OBREGÓN, *The Caribbean as Columbus Saw It*, Boston, MA 1964.  
 SMITH, R. C., 'Fathoming Columbus' Caravels', *Américas* 35:5 (1984) 18-23.  
 —'The Search for the Caravels of Columbus', *Oceanus* 28:1 (1985) 73-77.

## CHAPTER THREE

## Shipwrecks of the Explorers

AGRICOLA, G., *De re metallica*, trans. by H. C. and L. H. Hoover, Mineralogical Society of America, New York, NY 1950. Orig. pub. in Basle, 1556.  
 ARÁNTZEGUI Y SANZ, D. J., *Apuntes históricos sobre la artillería española en los siglos XIV y XV*, Establecimiento Tipográfico de Fortaret, Madrid 1887-1891.  
 ARNOLD, J. B. III and R. S. WEDDLE, *The Nautical Archaeology of Padre Island. The Spanish Shipwrecks of 1554*, New York 1978.  
 BARKHAM, M. M., *Report on 16th Century Spanish Basque Shipbuilding c. 1550 to c. 1600*, Parks Canada, Ontario 1981.  
 BIRINGUCCIO, V., *Pirotechnia*, trans. by C. S. Smith and M. T. Gnudi, Cambridge, MA 1943. Orig. pub. in Venice, 1540.  
 BUSH ROMERO, P., *Under the Waters of Mexico*, Carlton Press, Mexico City 1964.  
 CHAMBERLAIN, R. S., *The Conquest and Colonization of Yucatan, 1517-1550*, Carnegie Institution, Washington, D.C. 1948.  
 CHAUNU, H. and P. CHAUNU, *Séville et l'Atlantique 1504-1650*, 8 vols, SEVPEN, Paris 1955-1957.  
 FERNÁNDEZ DE NAVARRETE, M., *Colección de los viajes y descubrimientos que hicieron por mar los españoles desde fines del siglo XV*, 5 vols, Imprenta Real, Madrid 1825-1829.  
 HARRISSE, H., *The Discovery of North America*, N. Israel, Amsterdam 1969. Orig. pub. 1892.  
 IRVING, W., *Voyages and Discoveries of the Companions of Columbus*, Philadelphia, PA and London 1831.  
 KEITH, D. H. et al., 'The Molasses Reef Wreck, Turks and Caicos Islands, B.W.I.: A Preliminary Report', *IJNA* 13 (1984) 45-63.  
 KEITH, D. H. and J. J. SIMMONS, 'Analysis of Hull Remains, Ballast and Artifact Distribution of a 16th-Century Shipwreck, Molasses Reef, British West Indies', *JFA* 12 (1985) 411-424.  
 KEMPERS, R. T. W., 'Haquebuts from Dutch Collections', *Journal of the Arms and Armour Society* 11.2 (1983) 56-89.  
 LINK, M. C., see Ch. 2.  
 MCCLYMONT, J. R., *Vicente Añez Pinçón*, London 1916.  
 MORISON, S. E., *The European Discovery of America: The Southern Voyages*, New York and Oxford 1974.  
 —*Portuguese Voyages to America in the Fifteenth Century*, Cambridge, MA 1940.  
 OLDS, D., *Texas Legacy from the Gulf. A Report on Sixteenth-Century Shipwreck Materials Recovered from the Texas Tideland*, Texas Antiquities Committee, Austin 1976.  
 PALACIO, G. DE, *Instrucción náutica para navegar*, Mexico City 1587.  
 PETERSON, M., 'Exploration of a 16th-Century Bahaman Shipwreck', *National Geographic Society Research Reports, 1967 Projects*, Washington, D.C. 1974, 231-42.  
 —'Wreck Sites in the Americas', in *Underwater Archaeology: A Nascent Discipline*, UNESCO, Paris 1972.  
 —'Traders and Privateers Across the Atlantic: 1492-1733', in Bass, G. F. (ed.), *A History of Seafaring*, London and New York 1972, 254-280.  
 ROSLOFF, J. and J. B. ARNOLD III, 'The Keel of the San Esteban (1554): Continued Analysis', *IJNA* 13 (1984) 287-296.  
 SAUER, C. O., *The Early Spanish Main*, Berkeley, CA 1966.

SMITH, R. C., D. H. KEITH and D. C. LAKEY, 'The Highborn Cay Wreck: Further Exploration of a 16th-Century Bahaman Shipwreck', *IJNA* 14 (1985) 63-72.  
 VIGNERAS, L. A., *The Discovery of South America and the Andalusian Voyages*, Chicago 1976.  
 VIGÓN, J., *Historia de la artillería española*, Instituto Jerónimo Zurita, Madrid 1947.  
 WEDDLE, R. S., *Spanish Sea, The Gulf of Mexico in North American Discovery 1500-1685*, College Station, TX 1985.

## CHAPTER FOUR

## Basque Whalers in the New World

ARNOLD, J. B. III and R. S. WEDDLE, see Ch. 3.  
 BARKHAM, S., 'Finding Sources of Canadian History in Spain', *Canadian Geographic* (June 1980) 66-73.  
 BARKHAM, S. and R. GRENIER, 'Divers Find Sunken Basque Galleon in Labrador', *Canadian Geographic* (Dec. 1978) 60-63.  
 BÉLANGER, R., *Les Basques dans l'estuaire du Saint-Laurent*, Montreal 1971.  
 CUMBAA, S. L., 'Right Whales: Past and Present', *Proc. of Workshop on the Status of Right Whales. Internat. Whaling Commission, Boston, June 1983* (Cambridge, MA 1986) 187-190.  
 DALEY, T. and L. MURDOCK, 'Polysulfide Rubber and Its Application for Recording Archaeological Ship Features in a Marine Environment', *IJNA* 10 (1981) 337-342.  
 —'Underwater Molding of a Cross-section of the San Juan Hull', *Proc. of the ICOM Waterlogged Wood Working Group Conference, Ottawa 1981* (1982) 39-40.  
 GAIZTARRO, M. C., *Los Vascos en la Pesca de la Ballena*, Bibliotheca de Autores Vascos, San Sebastian 1960.  
 GRENIER, R., 'Excavating a 400 year old Basque Galleon', *NG* (July 1985) 58-68.  
 GRENIER, R. and J. TUCK, 'A 16th-century Basque Whaling Station in Labrador', *Scientific American* 245 no. 5 (Nov. 1981) 180-188.  
 JACQUES, B., *Navires et gens de mer à Bordeaux (vers 1400-vers 1550)*, Appendices, École Pratiques des Hautes Études, VIe section, Centre des Recherches Historique, SEVPEN, Paris 1968.  
 LEBLANC, G., 'Sur les traces des Basques', *Québec Science* 22, no. 11 (July 1984) 17-24.  
 PROULX, J.-P., 'La Pêche à la baleine dans l'Atlantique Nord jusqu'au milieu du XIXe siècle', *Études en Archéologie, Architecture et Histoire*, Parcs Canada, Ottawa (1986) 1-118.  
 RINGER, R. J., 'Progress Report on the Marine Excavation of the Basque Whaling Vessel San Juan (1565): A Summary of the 1982 Field Season', *Research Bulletin* 206, Parks Canada, Ottawa (1983) 1-20.  
 —'Sommaire des fouilles archéologiques subaquatiques effectuées à Red Bay en saison de 1984', *Bulletin de Recherche* 248, Parcs Canada, Ottawa (1986) 1-20.  
 ROSS, L., *Sixteenth-Century Spanish Basque Coopering Technology: A Report of the Staved Containers Found in 1978, 79 on the Wreck of the Whaling Galleon San Juan, Sunk in Red Bay, Labrador, 1565*. Manuscript Report no. 408, Parks Canada, Ottawa 1980.  
 STEVEN, E. W., 'Underwater Research at Red Bay, Labrador: A Summary of the 1981 Field Season', *Research Bulletin* 194, Parks Canada, Ottawa (1983) 1-14.  
 —'Rapport d'étape sur les fouilles sous-marines à Red Bay, résumé saison 1983', *Bulletin de Recherche* 240, Parcs Canada, Ottawa (1986) 1-16.  
 STEVEN, E. W. and P. WADDELL, 'Marine Archaeological Research at Red Bay, Labrador: A Summary of the 1985 Field Season', *Research Bulletin* 258, Environment Canada (1987) 1-12.  
 WADDELL, P., 'The Pump and Pump Well of a 16th Century Galleon', *IJNA* 14 (1985) 243-259.  
 —'The Disassembly of a 16th Century Galleon', *IJNA* 15 (1986) 137-148.

## CHAPTER FIVE

## Treasure Ships of the Spanish Main

*Spanish Shipping*  
 ANDREWS, K. R., *The Spanish Caribbean. Trade and Plunder 1530-1630*, New Haven 1978.  
 ARTIÑANO, GERVASIO DE, *La arquitectura naval española*, Oliva de Vilanova, Barcelona 1920.  
 FERNANDEZ DURO, C., *Armada española desde la unión de los reinos de Castilla y de Aragón*, 9 vols, Museo Naval, Madrid 1973.  
 HARING, C. H., *Trade and Navigation Between Spain and the Indies in the Time of the Hapsburgs*, Cambridge, MA 1918.  
 PARRY, J. H., *The Spanish Seaborne Empire*, New York 1966.  
 WEDDLE, R. S. see Ch. 3.  
 WOOD, P., *The Spanish Main*, Alexandria, VA 1979.

*Spanish Shipwrecks*

HORNER, D., *The Treasure Galleons*, New York 1971.  
 NATIONAL GEOGRAPHIC SOCIETY, *Undersea Treasures*, Washington, D.C. 1974.  
 PETERSON, M., 'Traders and Privateers', see Ch. 3.  
 —'Wreck Sites in the Americas', in *Underwater Archaeology: A Nascent Discipline*, UNESCO, Paris 1972, 85-93.  
 —*The Funnel of Gold*, Boston, MA 1975.  
 —'Reach for the New World', 152 no. 6 (Dec. 1977) 728-744.

## 1554 Fleet

ARNOLD, J. B. III, *An Underwater Archaeological Magnetometer Survey and Site Test Excavation Project off Padre Island*, Texas Antiquities Committee, Austin 1976.  
 —'The Flota Disaster of 1554', in Arnold, J. B. III (ed.), *Beneath the Waters of Time: Proceedings of the Ninth Conference on Underwater Archaeology*, Texas Ant. Comm., Austin 1978, 25-28.  
 ARNOLD, J. B. III, and R. S. WEDDLE, see Ch. 3.  
 DAVIS, J. L., *Treasure, People, Ships and Dreams*, Texas Ant. Comm., Austin 1977.  
 HAMILTON, D. L., *Conservation of Metal Objects from Underwater Sites: A Study in Methods*, Texas Ant. Comm., Austin 1976.  
 MCDONALD, D. and J. B. ARNOLD III, *Documentary Sources for the New Spain Fleet of 1554*, Texas Ant. Comm., Austin 1979.  
 OLDS, D. L., see Ch. 3.  
 ROSLOFF, J. and J. B. ARNOLD III, see Ch. 3.

## 1622 Fleet

LYON, E., 'The Trouble with Treasure', *NG* 149 no. 6 (June 1976) 787-809.  
 —*The Search for the Atocha*, New York 1979.  
 MATHEWSON, D. III, *Archaeological Treasure: The Search for the Nuestra Señora Atocha*, Seafarers Heritage Library, Woodstock, VT and Key West, FL 1983.

*La Concepción*

BORRELL, P. J., *Historia y rescate del galeón Nuestra Señora de la Concepción*, Museo de las Casas Reales, Santo Domingo 1983.  
 EARLE, P., *The Wreck of the Almiranta. Sir William Phips and the Hispaniola Treasure*, London 1979.  
 GRISSIM, J., *The Lost Treasure of the Concepción*, New York 1980.  
 KARRAKER, C. H., *The Hispaniola Treasure*, Philadelphia 1934.

## 1715 Fleet

BURGESS, R. F. and C. J. CLAUSEN, *Gold, Galleons and Archaeology*, New York 1976.  
 CLAUSEN, C. J., 'A 1715 Spanish Treasure Ship', *Contributions of the Florida State Museum, Social Sciences*, no. 12, Gainesville, FL 1965.  
 COCKRELL, W. A. and L. MURPHY, '8SL17: Methodological Approaches to a Dual Component Marine Site on the Florida Atlantic Coast', in Arnold, J. B. III (ed.), *Beneath the Waters of Time: Proceedings of the Ninth Conference on Underwater*

*Archaeology*, Texas Ant. Comm., Austin 1978, 175-180.

WAGNER, K., 'Drowned Galleons Yield Spanish Gold', *NG* 140 no. 1 (Jan. 1965) 1-37.  
—*Pieces of Eight: Recovering the Riches of a Lost Spanish Treasure Fleet*, New York 1972.

#### 1733 Fleet

BURGESS, R. F., 'Saga of the *San Jose*', *Oceans* 1 (1974) 66-71.

—*They Found Treasure*, New York 1977.

MEYLACK, M., *Diving to a Flash of Gold*, Garden City, NY 1971.

#### Guanalupe and Tolosa

BORRELLI, P. J., *Arqueología submarina en la República Dominicana*, Museo de las Casas Reales, Santo Domingo 1980.

PETERSON, M., 'Graveyard of the Quicksilver Galleons', *NG* 156 no. 6 (Dec. 1979) 850-876.

#### Portuguese Shipping

BOXER, C. R., *The Portuguese Seaborne Empire: 1415-1825*, New York 1969.

DIFFIE, B. W. and G. D. WINIUS, *Foundations of the Portuguese Empire, 1415-1580*, Minneapolis, MN 1977.

DUFFY, J., *Shipwreck and Empire, Being an Account of Portuguese Maritime Disasters in a Century of Decline*, Cambridge, MA 1955.

#### Sacramento

GUILMARTIN, J. F. Jr., 'The Guns of the *Santissimo Sacramento*', *Technology and Culture* 24 (1983) 559-601.

PERNAMBUCANO DE MELLO, U., 'The Shipwreck of the Galleon *Sacramento*-1668 off Brazil', *IJNA* 8 (1979) 211-223.

### CHAPTER SIX

#### The Thirteen Colonies

ADAMS, J., 'Sea Venture. A second interim report-Part I', *IJNA* 14 (1985) 275-299.

ALBRIGHT, A. B. and J. R. STEFFY, 'The Brown's Ferry Vessel, South Carolina', *IJNA* 8 (1979) 121-142.

BAKER, W.A., *The Mayflower And Other Colonial Vessels*, London and Annapolis, MD 1983.

DEAN, N., 'Manhattan's Mystery Merchant Ship', *WoodenBoat* 63 (1985) 96-100.

EVANS, C.W., *Some Notes on Shipbuilding and Shipping in Colonial Virginia*, Virginia 350th Anniversary Celebration Corp., Williamsburg, VA 1957.

FLEETWOOD, R., *Tidecraft, The Boats of Lower South Carolina and Georgia*, Coastal Heritage Society, Savannah, GA 1982.

GOLDENBERG, J. A., *Shipbuilding in Colonial America*, Charlottesville, VA 1976.

HAMILTON, D. H., 'The City Under the Sea', 1986 *Science Year* (The World Book Science Annual), Chicago, IL 1986, 94-109.

HARRINGTON, F., 'Strawberry Banke: A Historic Waterfront Neighborhood', *Archaeology* 36 no. 3 (1983) 52-59.

HOLLY, H. H., *Sparrow Hawk: A Seventeenth Century Vessel in Twentieth Century America*, Pilgrim Society, Plymouth, MA 1969, and *The American Neptune* 13 no. 1 (1953).

LAVERY, B. (ed.), *Deane's Doctrine of Naval Architecture, 1670*, London 1981.

MADDOCKS, M., *The Atlantic Crossing*, Alexandria, VA 1981.

MORISON, S.E., *The Maritime History of Massachusetts 1783-1860*, Boston, MA 1979.

ROSLOFF, J. P., *The Water Street Ship: Preliminary Analysis of an Eighteenth-Century Merchant Ship*, MA thesis, Texas A&M University 1986.

SALISBURY, W. and R. C. ANDERSON, *A Treatise on Shipbuilding and A Treatise on Rigging Written About 1620-1625*, Soc. For Nautical Research, London 1958.

SOLECKI, R. S., 'The *Tiger*, An Early Dutch 17th

Century Ship, and an Abortive Salvage Attempt', *JFA* 1 (1974) 109-116.

WINGWOOD, A. J., 'Sea Venture. An Interim Report on an Early 17th Century Shipwreck Lost in 1609', *IJNA* 11 (1982) 333-347.

### CHAPTER SEVEN

#### Struggle for a Continent

GARDNER, J., 'Relics of "Ghost Fleet" are Small Craft Bonanza', *National Fisherman*, Oct. 1966.

HAMILTON, E. P., *The French and Indian Wars*, Garden City, NY 1962.

—*Adventure in the Wilderness: The American Journals of Louis Antoine de Bougainville*, Norman, OK 1964.

KALM, P., *Travels into North America*, trans. by J. R. Forster, The Imprint Society, Barre, MA 1972. Orig. pub. in 1749.

KNOX, J., *A Historical Journal of the Campaigns in North America*, 3 vols, Freeport, NY 1970.

KREUGER, J., A. COHN, K. CRISMAN and H. MIKSCHE, 'The Fort Ticonderoga King's Shipyard Excavation', *The Bulletin of the Fort Ticonderoga Museum* 14, no. 6 (Fall 1985).

LAROCHE, D., 'Pas un, mais plusieurs bateaux sous le musée', *L'Escale* 5, no. 4 (May-June 1985).

PARKMAN, F., *Montcalm and Wolfe*, New York 1984.

PROULX, G., *Between France and New France*, Toronto and Charlottetown 1984.

SULLIVAN, C., *Legacy of the Machault*, Parks Canada 1986.

ZACHARCHUK, W. and P. J. A. WADDELL, *The Excavation of the Machault*, Parks Canada 1984.

### CHAPTER EIGHT

#### Gunboats and Warships of the American Revolution

CHAPELLE, H. I., *The History of American Sailing Ships*, New York 1935.

COGGINS, J., *Ships and Seamen of the American Revolution*, Harrisburg, PA 1969.

FORD, B. and D. SWITZER, *Underwater Dig: The Excavation of a Revolutionary War Privateer*, New York 1982.

GOLDENBERG, J. A., *Shipbuilding in Colonial America*, Charlottesville, VA 1976.

JAMES, W. M., *The British Navy in Adversity: A Study of the War of American Independence*, London 1933.

KNOX, D. W., *The Naval Genius of George Washington*, Boston, MA 1932.

LUNDEBERG, P. K., *The Continental Gunboat*

'*Philadelphia*' and the Northern Campaign of 1776, Smithsonian Institution, Washington, D.C. 1966.

MAHAN, A., *The Major Operations of the Navies in the War of American Independence*, London 1913.

MILLAR, J. F., *American Ships of the Colonial and Revolutionary Periods*, New York 1978.

SANDS, J. O., *Yorktown's Captive Fleet*, Charlottesville, VA 1983.

SYRETT, D., *Shipping and the American War, 1775-83: A Study of British Transport Organization*, London 1970.

### CHAPTER NINE

#### The War of 1812

BRANNAN, J., *Official Letters of the Military and Naval Officers of the United States During the War with Britain in the Years 1812, 1813, 1814, and 1815*, Washington, D.C. 1823.

CAIN, E., *Ghost Ships Hamilton and Scourge: Historical Treasures from the War of 1812*, Toronto and New York 1983, London 1984.

CASSAVOY, K. A., 'The Hamilton and the Scourge: A First Look', in Langley, S. B. M. and Unger, R. W. (eds), *Nautical Archaeology: Progress and Public Responsibility*, 176-198, BAR, Oxford 1984.

CASSAVOY, K. A., B. PENNY and A. AMOS, 'The Penetanguishene Naval Slip', in Skene, M. (ed.), *Archaeological Research Report No. 13*, 153-173, Ontario Historical Research Branch, Toronto 1980.

CHAPELLE, H. I., *The History of the American Sailing Navy*, New York 1949.

CRISMAN, K. J., *The History and Construction of the United States Schooner Ticonderoga*, Alexandria, VA 1983.

—*The Eagle*, New England Press, Shelburne, VT, and The Naval Institute Press, Annapolis, MD 1987.

CRUIKSHANK, E. A., 'The Contest for the Command of Lake Ontario in 1814', *Ontario History* 21 (1924) 99-160.

CUMBERLAND, B., 'The Navies on Lake Ontario in the War of 1812: Notes from the Papers of a Naval Officer then Serving on His Majesty's Ships', *Ontario Historical Society* 8 (1907) 124-142.

DUDLEY, W. S. (ed.), *The Naval War of 1812: A Documentary History*, Naval Historical Center, Dept. of the Navy, Washington, D.C. 1985.

EVEREST, A. S., *The War of 1812 in the Champlain Valley*, Syracuse, NY 1981.

HANNAY, D., *A Short History of the Royal Navy*, vol. 2, London 1909.

HOPKINS, F. and D. SHOMETTE, *War on the Patuxent, 1814*, Calvert Marine Museum, Solomons, MD 1981.

KENNEDY, P. M., *The Rise and Fall of the British Navy*, London 1876.

LOSSING, B., *The Pictorial Fieldbook of the War of 1812*, New York 1868.

MACDONOUGH, R., *Life of Commodore Thomas Macdonough, U.S. Navy*, Boston, MA 1909.

NELSON, D. A., 'Ghost Ships of the War of 1812', *NG* 163 no. 3 (March 1983) 288-313.

PRESTON, R. A., 'The History of the Port of Kingston', *Ontario History* 46 (1954) 202-211.

ROOSEVELT, T., *The Naval War of 1812*, New York 1882.

ROSENBERG, M., *The Building of Perry's Fleet on Lake Erie*, Pennsylvania Historical and Museum Commission, Harrisburg, PA 1974.

STACEY, C. P., 'The Ships of the British Squadron on Lake Ontario, 1812-1814', *Canadian Historical Review* 34 (1953) 311-323.

WOOD, W., *The War with the United States*, Toronto 1915.

### CHAPTER TEN

#### Steamboats on Inland Waterways

ADAMS, R. M., et al., *Survey of the Steamboat Black Cloud*, College Station, TX 1980.

AMBLER, C. H., *A History of Transportation in the Ohio Valley with Special Reference to Its Waterways, Trade, and Commerce from the Earliest Period to the Present Time*, Glendale, CA 1932.

BALDWIN, L. D., *The Keelboat Age on Western Waters*, Pittsburgh, PA 1941.

BATES, A., *The Western Rivers Steamboat Cyclopaedum or American Riverboat Structure & Detail, Salted with Lore with a Nod to the Modelmaker*, Leonia, NJ 1968.

BULLOCK, S., 'The "Miracle" of the First Steamboat', *Journal of American History* 1 (1907) 33-48.

DAVISON, R. (ed.), *The 'Phoenix' Project*, Champlain Maritime Society, Burlington, VT 1981.

DAYTON, F. E., *Steamboat Days*, New York 1925.

DRAGO, H. S., *The Steamboaters, From the Early Side-Wheelers to Big Packets*, New York 1967.

FLEETWOOD, R., *Tidecraft: The Boats of Lower South Carolina and Georgia*, Coastal Heritage Society, Savannah, GA 1982.

FLEXNER, J. T., *Steamboats Come True: American Inventors in Action*, 1944; repr. Boston and Toronto 1978.

GRAHAM, P., *Showboats: The History of an American Institution*, Austin, TX 1951.

HAITES, E. F., J. MAK and G. M. WALTON, *Western River Transportation: The Era of Early Internal Development, 1810-1860. Studies in Historical and Political Science*, Series 93 no. 2, Baltimore, MD 1975.

HUNTER, L. C., 'The Invention of the Western Steamboat', *Journal of Economic History* 3 (1943) 202-220.

- *Steamboats on the Western Rivers: An Economic and Technological History*, Cambridge, MA 1949.
- IRIGON, J. B., *Archaeological Testing of the Confederate Obstructions, 1862, Mobile Harbor, Alabama*, Austin, TX 1985.
- LATROBE, J. H. B., *The First Steamboat Voyage on the Western Waters*, Maryland Historical Society Fund Publication, no. 6, Maryland Historical Society, Baltimore, MD 1871.
- LESSTRANG, J., *Lake Carriers: The Saga of the Great Lakes Fleet - North America's Fresh Water Merchant Marine*, Seattle, WA 1977.
- LINGENFELTER, R. E., *Steamboats on the Colorado River, 1852-1916*, Tucson, AZ 1978.
- LYTLE, W. M. and F. R. HOLDCAMPER, *Merchant Steam Vessels of the United States 1790-1868*, ed. and rev. by C. Bradford Mitchell, Steamship Hist. Soc. of America, Staten Island, NY 1975.
- MCDERMOTT, J. F. (ed.), *Before Mark Twain. A Sampler of Old, Old Times on the Mississippi*, Carbondale and Edwardsville, IL 1968.
- MCDONALD, W. J., 'The Missouri River and Its Victims', *Missouri Historical Review* 21, no. 2 (1927).
- MAGMULLEN, J., *Paddle-Wheel Days in California*, Stanford, CA 1944.
- MERRICK, G. B., *Old Times on the Upper Mississippi: The Recollections of a Steamboat Pilot from 1854 to 1863*, Cleveland, OH 1909.
- MORGAN, J. S., *Robert Fulton*, New York 1977.
- MORRISON, J. H., *History of American Steam Navigation*, New York 1958.
- MYERS, D. P., 'The Architectural Development of the Western Floating Palace', *Journal of the Society of Architectural Historians* 11, no. 4 (1952) 25-31.
- OREGON HISTORICAL SOCIETY, *Steamboat Days on the Rivers*, Portland, OR 1969.
- PETERSON, W. J., 'Steamboating on the Missouri River', *Iowa Journal of History* 53 (1955) 97-120.
- PETSCHKE, J. E., 'Uncovering the Steamboat Bertrand', *Nebraska History* 51, no. 1 (1970).
- *The Steamboat 'Bertrand': History, Excavation, and Architecture*, National Park Service Publications in Archaeology 11, Washington, D.C. 1974.
- PRAGER, F. D., *The Autobiography of John Fitch*, American Philosophical Soc., Philadelphia, PA 1976.
- PREBLE, G. H., *A Chronological History of the Origin and Development of Steam Navigation*, Philadelphia, PA 1883.
- PURYEAR, P. A. and N. WINFIELD JR, *Sandbars and Sternwheelers, Steam Navigation on the Brazos*, College Station, TX 1976.
- SWITZER, R. R., 'Munitions on the Bertrand', *Archaeology* 25:4 (1972) 250-255.
- TAYLOR, G. R., *The Transportation Revolution 1815-1860*, Vol. IV in *The Economic History of the United States*, New York 1951.
- TURNER, R. D., *Sternwheelers and Steam Tugs*, Victoria, British Columbia 1984.
- TWAIN, M., *Life on the Mississippi*, New York 1980.
- U.S. CONGRESS, HOUSE, PRESIDENT'S MESSAGE, *Report of the Board of Engineers on the Ohio and Mississippi Rivers Made in the Year 1821*, House Doc. 35, 17th Congress, 2nd Session, Serial Set No. 78, 1823.
- WAY, F. JR, *Pilotin' Comes Natural*, New York and Toronto 1943.
- CHAPTER ELEVEN  
The Civil War at Sea
- AMMEN, D., *The Navy in the Civil War II. The Atlantic Coast*, New York 1883.
- ANDERSON, B., *By Sea and By River*, New York 1962.
- BEARSS, E. C., *Hardluck Ironclad*, Baton Rouge, LA 1966.
- BEERS, H. P., *Guide to the Archives of the Government of the Confederate States of America*, National Archives and Records Service, Washington, D.C. 1968.
- BERINGER, R. E., H. HATTAWAY, A. JONES and W. N. STILL JR, *Why the South Lost the Civil War*, Athens, GA 1986.
- BOLANDER, L. H., 'The Alligator, First Submarine of The Civil War', *U.S. Naval Institute Proceedings* 64 (June 1938) 843-854.
- BULLOCK, J. D., *The Secret Service of the Confederate States in Europe; How the Confederate Cruisers Were Equipped*, 2 vols, New York 1884.
- CARSE, R., *Blockade: The Civil War at Sea*, New York 1958.
- COCHRAN, H., *Blockade Runners of the Confederacy*, Indianapolis and New York 1958.
- DALY, R. W. (ed.), *Aboard the USS Florida: 1863-65*, United States Naval Institute, Annapolis, MD 1968.
- (ed.), *Aboard the USS Monitor: 1862*, United States Naval Institute, Annapolis, MD 1964.
- HOBART-HAMPTON, A. C., *Never Caught*, London 1867.
- JONES, V. C., *The Civil War at Sea*, 3 vols, New York 1960-1962.
- LESTER, R. I., 'The Procurement of Confederate Blockade Runners and Other Vessels in Great Britain During The American Civil War', *Mariners' Mirror* 61 (1975) 255-270.
- MACBRIDE, R., *Civil War Ironclads*, Philadelphia, PA 1962.
- MERLI, F. J., *Great Britain and the Confederate Navy 1861-1864*, Bloomington, IN 1970.
- MILLER, E. M., *USS Monitor, The Ship that Launched a Modern Navy*, Annapolis, MD 1978.
- MUNDEN, K. W. and H. P. BEERS, *Guide to Federal Archives Relating to the Civil War*, National Archives and Records Service, Washington, D.C. 1962.
- PARKER, CAPT. W. H., *Recollections of a Naval Officer 1841-1865*, New York 1883.
- PEAKE, J., *Rudiments of Naval Architecture: or, An Exposition of the Practical Principles of the Science in its Application to Naval Construction; Compiled for the Use of Beginners*, London 1851.
- PERRY, M. F., *Infernal Machines: The story of Confederate Submarine and Mine Warfare*, Baton Rouge, LA 1965.
- PRICE, M. W., 'Ships that Tested the Blockade of the Carolina Ports, 1861-1865', *The American Neptune* 8 (1948) 196-241.
- ROLAND, A., *Underwater Warfare in the Age of Sail*, Bloomington, IN 1978.
- SCHARF, J. T., *The History of the Confederate States Navy from Its Organization to the Surrender of Its Last Vessel*, 2 vols, New York 1887.
- SEMMES, R., *Service Afloat: The Remarkable Career of the Confederate Cruisers 'Sumter' and 'Alabama', During the War Between the States*, New York 1900.
- SOLEY, J. R., *The Navy in the Civil War I. The Blockade and the Cruisers*, New York 1883.
- STILL, W. N. JR, *Iron Afloat: The Story of the Confederate Armorclads*, Columbia, SC 1985.
- U.S. DEPARTMENT OF THE NAVY, *Civil War Chronology, 1861-1865*, Govt Printing Office, Washington, D.C. 1971.
- VANDIVER, F. (ed.), *Confederate Blockade Running Through Bermuda, 1861-1865; Letter and Cargo Manifests*, Austin, TX 1957.
- (ed.), 'The Capture of a Confederate Blockade Runner: Extracts from the Journal of a Confederate Naval Officer', *North Carolina Historical Review* 21 (1944) 136-138.
- WAR OF THE REBELLION: *Official Records of the Union and Confederate Navies in the War of Rebellion*, 30 vols, Govt Printing Office, Washington, D.C. 1894-1922.
- WATTS, G. P. JR, *Investigating the Remains of the USS Monitor: A Final Report on 1979 Site Testing in the 'Monitor' National Marine Sanctuary*, North Carolina Division of Archives and History, Wilmington, NC 1982.
- CHAPTER TWELVE  
The End of the Age of Sail
- ALBION, R. G., *The Rise of New York Port, 1815-1860*, New York 1939.
- *Square-Riggers on Schedule*, Princeton, NJ 1938.
- (ed.), *Naval and Maritime History: An Annotated Bibliography*, Marine Historical Association, Mystic, CT 1972.
- ALBION, R. G., W. A. BAKER and B. W. LABAREE, *New England and the Sea*, Middletown, CT 1972.
- ALLEN, D. E., *The Windjammers*, Alexandria, VA 1978.
- AMERICAN NEPTUNE, THE: *A Quarterly Journal of Maritime History*, Peabody Museum of Salem, Salem, MA 1941-present.
- ASHLEY, C. W., *The Yankee Whaler*, Boston, MA 1926.
- BAKER, W. A., *The Engine-Powered Vessel: From Paddle-Wheeler to Nuclear Ship*, New York 1965.
- BENSON, R. M., *Steamships and Motorships of the West Coast*, New York 1968.
- BRADLEE, F. B. C., *Some Account of Steam Navigation in New England*, Essex Institute, Salem, MA 1920.
- BROUWER, N. J., *International Register of Historic Ships*, Annapolis, MD 1985.
- BRYANT, S. W., *The Sea and the States: A Maritime History of the American Merchant Marine 1950*.
- CHAPELLE, H. I., *The American Fishing Schooners, 1825-1935*, New York 1975.
- *American Sailing Craft*, New York 1936.
- *American Small Sailing Craft: Their Design, Development and Construction*, New York 1951.
- *The Baltimore Clipper: Its Origin and Development*, Marine Research Society, Salem, MA 1930.
- see Ch. 8.
- *The National Watercraft Collection*, Smithsonian Institution, Washington, D.C. 1960.
- *The Search for Speed under Sail*, New York 1967.
- CLARK, A. W., *The Clipper Ship Era: An Epitome of the Famous American and British Clipper Ships. 1843-1869*, New York 1910.
- CUTLER, C. C., *Five Hundred Sailing Records of American Built Ships*, Marine Historical Association, Mystic, CT 1952.
- *Greyhounds of the Sea: The Story of the American Clipper Ship*, U.S. Naval Institute, Annapolis, MD 1930.
- *Queens of the Western Ocean: The Story of America's Mail and Passenger Sailing Lines*, U.S. Naval Institute, Annapolis, MD 1961.
- DALZELL, G. W., *The Flight from the Flag: The Continuing Effect of the Civil War on the American Carrying Trade*, 1940.
- DOW, G. F., *Whale Ships and Whaling*, Marine Research Society, Salem, MA 1925.
- DUGAN, J., *The Great Iron Ship*, New York 1953.
- DUNBAUGH, E. L., *The Era of the Joy Line: A Saga of Steamboating on Long Island Sound*, Westport, CT 1982.
- EMMERSON, G. S., *The Greatest Iron Ship: S.S. Great Eastern*, Newton Abbot, England and North Pomfret, VT n.d.
- FAIRBURN, W. A., *Merchant Sail*, 6 vols, Fairburn Marine Educational Foundation, Center Lovell, ME 1945-55.
- FARR, G. E., *The Steamship Great Britain*, Bristol Branch of the Historical Association, Bristol 1965.
- *The Steamship 'Great Western': The First Atlantic Liner*, Dursley, England n.d.
- FASSETT, F. G. (ed.), *The Shipbuilding Business in the United States of America*, 2 vols, Society of Naval Architects and Marine Engineers, New York 1948.
- GIBBS, J. A., *Shipwrecks of the Pacific Coast*, Portland, OR 1957.
- GOODE, G. B., *The Fisheries and Fishing Industries of the United States*, 8 vols, Govt Printing Office, Washington, D.C. 1884-87.
- GREGOR, H., *The S.S. Great Britain*, New York 1971.
- HIGARTY, R. B., *Addendum to 'Starbuck' and 'Whaling Masters'*, New Bedford Free Public Library, New Bedford, MA 1964.
- HOCKING, C., *Dictionary of Disasters at Sea during the Age of Steam . . . 1824-1962*, 2 vols, Lloyd's Register of Shipping, London 1969.
- HOWE, O. T. and F. C. MATTHIWS, *American Clipper Ships 1833-1858*, 2 vols, Marine Research Society, Salem, MA 1926-27.
- HOWLAND, S. A., *Steamboat Disasters and Railroad Accidents in the United States*, Worcester, MA 1840.

- HUGHES, T., *The Blue Riband of the Atlantic*, New York 1973.
- HUNTRESS, K. G., *A Checklist of Narratives of Shipwrecks and Disasters at Sea to 1860*, Ames, IA 1979.
- Narratives of Shipwrecks and Disasters, 1586–1860*, Ames, IA 1974.
- JOHNSTON, P. F., *The New England Fisheries: A Treasure Greater than Gold*, Peabody Museum of Salem, Salem, MA 1984.
- et al., *A Sportdiver's Handbook for Historic Shipwrecks: Tools and Techniques*, Northeast Marine Advisory Council, Durham, NH 1982.
- Steam and the Sea*, Peabody Museum of Salem, Salem, MA 1983.
- KEMBLE, J. H. (ed.), *Gold Rush Steamers*, Book Club of California, San Francisco, CA 1958.
- Side-Wheelers Across the Pacific*, San Francisco Museum of Science and Industry, San Francisco, CA 1942.
- LEAVITT, J. F., *Wake of the Coasters*, Mystic, CT 1970.
- LLOYD'S REGISTER OF SHIPPING, London 1764–present.
- LUBBOCK, A. B., *The Down Easters, American Deep Water Sailing Ships, 1869–1929*, Boston, MA 1929.
- The Nitrate Clippers*, Boston, MA 1932.
- LYTLE, W. M. and F. R. HOLDCAMPER, see Ch. 10.
- MCADAM, R. W., *The Old Fall River Line*, New York 1955.
- MCFARLAND, R., *A History of the New England Fisheries*, New York 1911.
- MCKAY, R. C., *Some Famous Sailing Ships and Their Builder, Donald McKay*, New York 1928.
- MCNAIRN, J. and J. MACMULLEN, *Ships of the Redwood Coast*, Stanford 1945.
- MADDOCKS, M., *The Atlantic Crossing*, Alexandria, VA 1981.
- The Great Liners*, Alexandria, VA 1978.
- MAGINNIS, A. J., *The Atlantic Ferry: Its Ships, Men and Workings*, London 1900.
- MARINER'S MIRROR, THE Society for Nautical Research, London 1911–present.
- MARSHALL, D., *California Shipwrecks: Footsteps in the Sea*, Seattle, WA 1978.
- MARTIN, W. E., *Sail and Steam on the Northern California Coast, 1850–1900*, San Francisco National Maritime Museum Association, San Francisco, CA 1983.
- MATTHEWS, F. C., *American Merchant Ships 1850–1900*, 2 vols, Marine Research Society, Salem, MA 1930–31.
- MORISON, S. E., see Ch. 6.
- MORRIS, E. P., *The Fore-and-Aft Rig in America: A Sketch*, New Haven, CT 1927.
- PARKER, H. and F. C. BOWEN, *Mail Passenger Steamers of the Nineteenth Century*, Philadelphia, PA n.d.
- PARKER, W. J. L., *The Great Coal Schooners of New England, 1870–1909*, Marine Historical Association, Mystic, CT 1948.
- RIDGELY-NEVITT, C., *American Steamships on the Atlantic*, Newark, DE 1981.
- SMITH, E. W., *Passenger Ships of the World, Past and Present*, Boston, MA 1978.
- SMITH, M. H., *An Interpretive Study of the Collection Recovered from the Storeship 'Nianatic'*, National Trust for Historic Preservation and National Maritime Museum Association, San Francisco, CA 1981.
- SPRATT, H. P., *One Hundred Years of Transatlantic Steam Navigation, 1838–1938*, London 1938.
- Outline History of Transatlantic Steam Navigation*, London 1950.
- Transatlantic Paddle Steamers*, Brown, Son & Ferguson, Glasgow 1967.
- STARBUCK, A., *History of the American Whale Fishery from its Earliest Inception to the Year 1876*, Waltham, MA 1877.
- STORY OF YANKEE WHALING, THE, New York 1959.
- TOD, G. M., *The Last Sail down East*, Barre, MA 1965.
- WEBB, W. H., *Plans of Wooden Vessels . . . Built by William H. Webb in the City of New York . . . 1840–1869*, New York 1895.
- WHIPPLE, A. B. C., *The Clipper Ships*, Alexandria, VA 1980.
- The Whalers*, Alexandria, VA 1979.
- TIPTON, G. W., *The Great Liners*, Alexandria, VA 1978.
- TITANIC, *NG* 168 (Dec. 1985) 696–719.
- BASCOM, W., *The Crest of the Wave*, New York 1988.
- Deep Water, Ancient Ships*, Garden City, NY 1976.
- BASS, G. F., 'The Men Who Stole the Stars', *Sea History* 12 (Fall 1979) 30.
- 'Marine Archaeology: A Misunderstood Science' in Borgese, E. M. and N. Ginsburg, (eds.), *Ocean Yearbook* 2, Chicago 1980, 137–152.
- 'A Plea for Historical Particularism in Nautical Archaeology' in Gould, R. A. (ed.), *Shipwreck Anthropology*, Albuquerque 1983, 91–104.
- 'The Promise of Underwater Archaeology in Retrospect', *Museum* (UNESCO) 137 (1983) 5–8.
- 'Archaeologists, Sport Divers, and Treasure-Hunters', *JFA* 12 (1985) 256–258.
- CHAMBERLAND, D., 'Titanic: Target of Opportunity', *U.S. Naval Institute Proceedings*, vol. 113/8/1014, Annapolis, Maryland (August 1987) 56–63.
- DAVIS, SIR R. H., *Deep Diving and Submarine Operations: A Manual for Deep Sea Divers and Compressed Air Workers*, parts I & II, 5th edn London 1951.
- FORSBERG, G., *Salvage from the Sea*, London and Henley 1977.
- GORES, J. N., *Marine Salvage: The Unforgiving Business of No Cure, No Pay*, Garden City, NY 1971.
- KOSTER, D. A., *Ocean Salvage*, New York 1971.
- MACINNIS, J. B., 'Exploring a 140-year-old Ship Under Arctic Ice', *NG* 164 (July 1983) 104A–104D.
- MADDOCKS, M., 'A Litany of Disasters on the Devil Sea' in *The Great Liners*, Alexandria, VA 1978: 114–141.
- MOSCOW, A., *Collision Course: The 'Andrea Doria' and the 'Stockholm'*, New York 1959.
- SEARLE, W. F. and F. R. BUSBY, Prepared Testimony in *Hearing Before the House Merchant Marine and Fisheries Committee on H.R. 3272 The Titanic Maritime Memorial Act of 1985, 29 October 1985*, Serial No. 99-21, Govt Printing Office, Washington, D.C. 1986, 87–107.
- SHEPARD, B., *Love of the Wreckers*, Boston, MA 1961.
- THROCKMORTON, P. (ed.), *The Sea Remembers: Shipwrecks and Archaeology*, New York 1987 (publ. in England as *History from the Sea: Shipwrecks and Archaeology*, London 1987).

## EPILOG

- BALLARD, R. D., 'A Long Last Look at Titanic', *NG* 170 (Dec. 1986) 698–727.
- 'Epilogue for Titanic', *NG* 172 (Oct. 1987) 454–463.
- BALLARD, R. D. and J.-L. MICHEL, 'How We Found

## Sources of Illustrations

TITLE PAGE Photo D. Pagé. Courtesy Parks Canada.

INTRODUCTION Maps by Hanni Bailey.

CHAPTER ONE 1 Department of Library Services, American Museum of Natural History. 2 *PA* 38008, Public Archives Canada. Photo A. P. Low. 3 Department of Ethnography, National Museum of Denmark. Photo T. Krabbe. 4 Courtesy Florida Department of Natural Resources. 5 Cleveland Museum of Natural History. 6 Courtesy Terence Grieder. 7, 8 Courtesy of the Trustees of the British Museum, London. 9 Royal Ontario Museum, Toronto. 10 British Library, London. 11 After *Indian Art of the United States* by F. Douglas and R. D'Harnoncourt (New York 1948). 12 Photo Margaret Leshikar. 13 Photo Janice Rubin. 14 Carnegie Institute of Washington. 15–17 Courtesy Tikal Project, The University Museum, University of Pennsylvania. 18 Photo Norman Hammond. 19 Museo Nacional de Antropología, Mexico. 20 Photo Margaret Leshikar. 21 Museo del Oro, Banco de la República, Bogotá. 22 From Lienzo de Tlaxcala, *Antigüedades Mexicana* (facsimile, 1892). 23 Drawn by Tatiana Proskouriakoff. Peabody Museum, Harvard University. Photo H. Burger. 24 Drawn by Julio C. Burgos. Museo Antropológico, Banco Central del Ecuador, Guayaquil. 25 Museo

Regional de Arqueología, Arica. Photo courtesy Callwey Verlag, Munich. 26 Rautenstrauch-Joest-Museum, Cologne. 27 Woodcut of 1565. 28 University Museum, University of Pennsylvania. Photo Max Uhle. 29 After A. Baessler, *Ancient Peruvian Art* (1903). 30 Museum für Völkerkunde, Hamburg. 31 Courtesy Parks Canada. Model by D. Colwell. Photo T. Lackey. 32, 33 © Viking Ship Museum, Roskilde, Denmark. Photo G. Schantz.

CHAPTER TWO 1 From Pedro de Medina, *L'arte de navegar* (Venice 1555). Photo The John Carter Brown Library. 2 Prins Hendrik Maritime Museum, Rotterdam. Drawn by Björn Landström. Courtesy International Book Production, Stockholm. 3 From the *Atlas of Portolan Charts* by Vesconte Maggiolo (Naples 1511). Photo The John Carter Brown Library. 4 From the *Boke of Idrography* by Jean Rotz (1542). Photo The John Carter Brown Library. 5 Chicago Historical Society. Photo C. D. Arnold. 6 Drawn by ML Design. 7 Photo KC Smith. 8 From the *Isolaria* by Benedetto Bordini (1534). 9 Photo KC Smith. 10 Photo R. C. Smith. 11 Photo KC Smith. 12 Museo Navale di Pegli, Genoa. 13 Photo KC Smith. 14 Courtesy Institute of Nautical Archaeology. Photo Bruce Thompson.

CHAPTER THREE 1 Museo Naval, Madrid. Photo Luis Dorado. 2 Bibliothèque Nationale,

Paris. 3 Photo George Eastman House. 4 From the *Instrucción náutica* by Diego García de Palacio (Mexico City 1587). Photo The John Carter Brown Library. 5 Courtesy Texas Antiquities Committee. Photo J. Jenkins. 6, 7 Courtesy Texas Antiquities Committee. 8 Corpus Christi Museum, Texas. 9 After Texas Antiquities Committee. 10–14 Courtesy Texas Antiquities Committee. 15 Photo KC Smith. 16 Photo R. C. Smith. 17, 18 Photos D. D. Denton. 19 Photo R. F. Marx. 20 Photo Susan Samon. 21 Photo KC Smith. 22 Photo Smithsonian Institution. 23 After J. J. Simmons. 24 After J. J. Simmons. 25, 26 Photos D. D. Denton. 27 After D. H. Keith and J. J. Simmons. 28 After D. H. Keith. 29 After J. A. Duff and J. J. Simmons. 30 Photo S. Hoyt. 31 Photo M. D. Myers. 32, 33 Courtesy Institute of Texan Cultures of the University of Texas at San Antonio. 34 Drawn by D. H. Keith and J. J. Simmons. Courtesy Institute of Nautical Archaeology. 35 After J. J. Simmons. Map (p. 66) After D. H. Keith.

CHAPTER FOUR 1 After W. Stevens. 2 Drawn by P. Waddell and J. Farley. 3 Drawn by W. Stevens and C. Piper. 4 Photo R. Chan. 5 John Rylands University Library of Manchester. 6 Painting by Abraham Speck. Rijksmuseum, Amsterdam. 7 Photo R. Chan. Courtesy Parks Canada. 8 Photo D. Pagé. Courtesy Parks Canada. 9 Courtesy R. Grenier. 10 Photo D. Pagé. Courtesy

Parks Canada. **11, 12** Musée de la Marine, Paris. **13** Drawn by R. Hellier. **14** Photo P. Waddell. **15** Drawn by S. Laurie-Bourque. **16–18** Photo D. Pagé. Courtesy Parks Canada. **19** Drawn by R. Hellier. **20** Photo D. Pagé. **21–23** Drawn by C. Piper. **24** Photo R. Chan. **25** Drawn by W. Stevens and C. Piper. **26** Photo M. Gingras. **27** Photo R. Chan. Courtesy Parks Canada. **28** Photo D. Pagé. Courtesy Parks Canada.

CHAPTER FIVE **1** Bibliothèque Nationale, Paris. **2** British Library, London. **3** Photo Farley Sonnier. **4, 5** After J. J. Simmons. **6, 7** Courtesy Texas Antiquities Committee. Drawn by J. Rosloff. **8** Institute of Maritime History and Archaeology, Bermuda Maritime Museum. **9** Photo Bermuda Maritime Museum. **10** Drawn by Toni Hepburn. Courtesy Jim Miller. **11** Seventeenth-century engraving. **12** Drawn by Simon S. Driver. **13** Museo Naval, Madrid. **14, 15** Courtesy Pedro J. Borrell. **16** Courtesy Florida Bureau of Archaeological Research. **17** Detail of a map from *A Concise Natural History of East and West Florida* by Bernard Romans, New York 1775. British Library, London. **18** Courtesy Florida Bureau of Archaeological Research. **19** Drawn by James B. Levy. Courtesy Florida Division of Historic Resources. **20** Courtesy Pedro J. Borrell. **21** © National Geographic Society. Photo Jonathan S. Blair. **22** Courtesy Pedro J. Borrell. **23** Courtesy Florida Bureau of Archaeological Research. **24, 25** Drawn by Toni Hepburn. Courtesy Florida Division of Historic Resources. **26** Courtesy Florida Bureau of Archaeological Research. **27, 28** Courtesy Florida Division of Historic Resources. Photos R. C. Smith. **29–31** After U. Pernambucano de Mello (*IJNA* vol. 8 no. 3, 1979).

CHAPTER SIX **1** Drawn by ML Design. **2, 3** The Science Museum, London. **4** Courtesy Plimoth Plantation, Plymouth, MA. **5–7** Courtesy Sea Venture Trust. Plan by Jon Adams. **8** After J. Adams. Courtesy Sea Venture Trust. **9** Courtesy Sea Venture Trust. **10** Courtesy of the Pilgrim Society, Plymouth, MA. **11** Photo Alan Albright. **12** Courtesy Institute of Archaeology and Anthropology at the University of South Carolina. **13** Detail from *View of the camp of John Law's concession at New Biloxi, Louisiana, 1720*. Newberry Library, Chicago. **14** Courtesy Plimoth Plantation. Photo Ted Avery. **15** Broadside, London 1692. **16–18** Courtesy Institute of Nautical Archaeology. **19** Photo Shirley Gotelipe. **20–22** Courtesy South Carolina Institute of Archaeology and Anthropology. Photos Gordon Brown. **23, 24** Drawn by Darby Erd. Courtesy South Carolina Institute of Archaeology and Anthropology. **25** Photo Gordon Brown. **26** Photo Alan Albright. **27, 28** Courtesy Jamestown Festival Park. **29** Courtesy the Master and Fellows of Magdalene College, Cambridge. **30** Drawn by J. R. Steffy. **31, 32** Photos J. R. Steffy. **33** Photo Gordon Brown. **34** The Mariners' Museum, Newport News, VA. **35** The Mariners' Museum. Photo Robert Adams. **36** Photo G. Watts. **37** The Mariners' Museum. Photo Robert Adams.

CHAPTER SEVEN **1** The New-York Historical Society, NY. **2** Basin Harbor Maritime Museum, Vermont. **3** Photo Kenneth Garrett. **4** Courtesy Société Immobilière du Québec and the Québec Ministry of Cultural Affairs. **5** Courtesy Fort Ticonderoga Museum. **6–8** Courtesy K. Crisman. **9** © National Geographic Society. Photo David

Arnold. **10, 11** Drawn by K. Crisman. **12, 13** Basin Harbor Maritime Museum, Vermont. **14** Virginia Canals & Navigations Society. Photo W. E. Trout. **15** Archaeological Society of Virginia. Photo L. E. Browning. **16** Bibliothèque Nationale, Paris. **17** Yale University Art Gallery, Mabel Brady Carvan Collection. **18** Royal Ontario Museum, Toronto. **19–22** Drawn by K. Crisman. **23, 24** Drawn by S. Cooper. **25, 26** Drawn by K. Crisman. **27, 28** Fort Ticonderoga Museum. Photos John Butler. **29** Courtesy Parks Canada. **30** C 13319, Public Archives, Canada. **31** National Gallery of Canada, Ottawa.

CHAPTER EIGHT **1** New York Public Library. I. N. Phelps Stokes Collection. **2** DAR Museum, Washington, D.C. **3** Windsor Castle, Royal Library. © Her Majesty The Queen. **4–6** Smithsonian Institution, NMAH. **7, 8** Photos Carroll and Philip Voss. **9** Virginia Division of Historic Landmarks (VDHL). Photo R. Adams. **10, 11** VDHL. Photos John D. Broadwater. **12** The Mariners' Museum, Newport News, VA. **13, 14** Drawn by Peter Hentschel. Courtesy Institute of Nautical Archaeology (INA). **15** Drawn by Cynthia Orr. Courtesy INA. **16** Maine State Museum, Augusta. **17** Drawn by Sheli Smith. Courtesy INA. **18** The Mariners' Museum, Newport News, VA. **19** Maryland Historical Society, Baltimore. **20** National Portrait Gallery, London. **21, 22** The Mariners' Museum, Newport News, VA. **23** The Science Museum, London. **24** Newberry Library, Chicago. **25** National Maritime Museum, Greenwich. **26** Virginia Division of Historic Landmarks. Photo John D. Broadwater. **27, 28** VDHL. Drawn by John D. Broadwater. **29** VDHL. Drawn by David Hazzard. **30** VDHL.

CHAPTER NINE **1** Yale University Art Gallery, Mabel Brady Garvan Collection. **2** USS *Constitution* Museum Foundation, Boston, MA. **3–5** Library of Congress, Washington, D.C. **6** Drawn by ML Design. **7** Klein Associates. Courtesy Canada Centre for Inland Waters and the Royal Ontario Museum. **8, 9** Courtesy Hamilton-Scourge Project. **10** Courtesy K. Crisman. **11** Historic Naval and Military Establishments, Penetanguishene, Ontario. **12** Courtesy K. Crisman. **13** C 794, Public Archives, Canada. **14** Drawn by K. Crisman. **15** Courtesy K. Cassavoy. **16** © 1983 National Geographic Society. Photo Emory Kristof. Courtesy Hamilton-Scourge Project. **17** Courtesy Hamilton-Scourge Project. **18** © 1983 National Geographic Society. Photo Emory Kristof. Courtesy Hamilton-Scourge Project. **19, 20** Drawn by K. Crisman. **21** Royal Ontario Museum, Toronto. **22** Historic Naval and Military Establishments, Penetanguishene, Ontario. **23** Engraved by B. Tanner after H. Reinagle. **1816**. **24–26** Drawn by K. Crisman. **27** Courtesy Ontario Archives. **28** Historic Naval and Military Establishments, Penetanguishene, Ontario. **29** Drawn by K. Crisman.

CHAPTER TEN **1** New Jersey Historical Society, Alosfen Collection. **2** American Society of Mechanical Engineers, New York. **3** New York State Historical Association, Cooperstown, N.Y. **4** American Society of Mechanical Engineers, New York. **5** Peabody Museum of Salem, MA. **6, 7** Drawn by K. Crisman. **8** The Mariners' Museum, Newport News, VA. **9** Wood engraving, 1858. **10** National Archives, Washington, D.C. **11** Robert D. Turner, B.C. Provincial Museum, Victoria. **12**

From *Harper's Weekly*, 1888. **13** Photo R. M. Adams. **14, 15** Drawn by D. H. Keith. **16** Drawn by J. J. Simmons. **17** Public Library of Cincinnati and Hamilton County. **18** Courtesy DeSoto National Wildlife Refuge, U.S. Fish and Wildlife Service. **19** Anglo-American Art Museum, Louisiana State University, Baton Rouge. Gift of Mrs Mamie Persac Lusk. **20–25** Courtesy DeSoto National Wildlife Refuge, U.S. Fish and Wildlife Service. **26** © National Geographic Society. Photo John Fulton. **27** Photo KC Smith. **28** Champlain Maritime Society and the Vermont Division for Historic Preservation 1981. **29** Louisiana Collection, Tulane University Library.

CHAPTER ELEVEN **1, 2** Photo G. Watts. **3** The Mariners' Museum, Newport News, VA. **4** After G. Watts. **5** National Archives, Washington, D.C. **6** From *Harper's Weekly*, 1863. **7** North Carolina Division of Archives and History. **8** Drawn by J. Jannaman. North Carolina Division of Archives and History. **9** Photomosaic U.S. Navy. **10** Photo G. Watts. **11** Drawn J. Jannaman. North Carolina Division of Archives and History. **12** National Archives, Washington, D.C. **13, 14** National Park Service, Vicksburg. Photo William Wilson. **15, 16** National Park Service, Vicksburg. **17** New Hanover County Museum. **18** Photo James A. Pleasants. North Carolina Division of Archives and History. **19** Merseyside County Museums, Liverpool. **20** Drawn by Julie Melton. Program in Maritime History and Underwater Research, East Carolina University. **21, 22** Courtesy Sam Margolin. **23** The Mariners' Museum, Newport News, VA. **24** National Archives, Washington, D.C. **25–28** James W. Woodruff Confederate Naval Museum, Columbus, GA. **29** Drawn by Kaea Morris, Tidewater Atlantic Research. **30** Photo Wesley K. Hall. **31** From *The Illustrated London News*, 1862. **32** Courtesy Hall Watters. **33** National Archives, Washington, D.C. **34** Courtesy Mrs Thomas Godet, Hamilton, Bermuda. **35, 36** Photos KC Smith.

CHAPTER TWELVE **1–4** Peabody Museum of Salem. **5** Courtesy Maritime Heritage Prints, Boston. **6** Courtesy The Bostonian Society. Photo Peabody Museum of Salem. **7** Courtesy Snow Squall Project. **8** Peabody Museum of Salem, Francis Lee Higginson Steamship Collection. **9** Museum of the City of New York. **10** National Maritime Museum, Greenwich. **11** Photo Associated Press. **12** National Maritime Museum, Greenwich. **13–15** National Maritime Museum, San Francisco. **16, 17** Peabody Museum of Salem. **18** George Eastman House. **19** Metropolitan Museum of Art, New York. **20–22** Peabody Museum of Salem. **23** Courtesy James P. Delgado, National Park Service. **24** Mystic Seaport Museum. **25** Peabody Museum of Salem. **26** Courtesy Howard Wright. **27** Peabody Museum of Salem. **28** Courtesy Society for the Preservation of New England Antiquities.

EPILOG **1** National Geographic Society July 1983. Photo Kristof. **2** Dr Owen Beattie/University of Alberta. **3** © Woods Hole Oceanographic Institution, MA. **4** Woods Hole Oceanographic Institution, MA. **5** WHOI & IFREMER. **6** Drawn T. Gravemaker. **7** From *The Illustrated London* 4 August 1956. **7** © The Doria Project. Photo Mark Schreyer. Courtesy Oceanering International. **8** Official U.S. Navy Photograph. **9** Collection USS National Park Service. Drawn by Jerry