

**OSD**<sup>®</sup>  
BLACK

# BLACK

---

BLACK by Optimal Speaker Design is a range of premium quality flush-mount loudspeakers designed to serve discriminating homeowners and A/V integrators who demand the ultimate in aesthetic style and audio performance. BLACK products include unique features and technologies that make them better looking, easier to install and more durable, while delivering lifelike sound quality more typically found in free-standing audiophile grade speakers.

There are BLACK models to fit every distributed audio and home theater application and space, offered in three performance levels: Acoustic, Performance and Reference. BLACK products are sold only through custom installation Audio Video specialist dealers in order to ensure proper system design, installation and total customer satisfaction.

## **The Optimal Speaker Design Heritage**

Driven by his passion for music and his drive for excellence in every facet of his life, entrepreneur and lifelong audiophile Dave Chai formed OSD in 2003. Dave knew that by leveraging his close relationships with some of the finest engineering and product design people in the consumer electronics field, along with a network of global manufacturing resources he could bring better sounding, higher value audio products to the custom installation channel.

OSD's deeply talented and experienced design team used cutting edge audio technologies such as transmission line bass system alignment to design a stunning range of audio products—BLACK. The exceptional performance of BLACK products combined with Dave's dedication to person-to-person, expert technical support is a winning formula perfect for these times of change. BLACK SERIES is the ultimate expression of Dave's vision and dedication to better quality audio for all.





REFERENCE

Carbon Fiber Woofers, (TPR) Thermoplastic Rubber Surrounds, Pivoting Ceramic Coated Aluminum Dome Tweeters, Contour Switch (+3/0/-3 dB) and Second Order Crossover Network with air core coil, Mylar bypass capacitor and vented protective shield\*



PERFORMANCE

Mineral filled Graphite Woofer, Butyl Rubber Surrounds, Pivoting Parachute Silk Soft Dome Tweeters, Contour Switch (+3/0/-3 dB) and Second Order Crossover Network with air core coil, Mylar bypass capacitor and vented protective shield\*



ACOUSTIC

Polymer Woofer, Butyl Rubber Surrounds, Pivoting Silk Soft Dome Tweeter and First Order Crossover Network



\* excluded models: Acoustic Range

CUSTOM CROSSOVER

BLACK Reference and Performance models feature audiophile-grade crossover components including Mylar bypass capacitors to enhance high frequency extension for exceptional clarity and "air." Protective Shields\* protect the components from debris and suffocating insulation while integrated air vents keep things cool.



PRO MOUNTING

Installers will appreciate the BLACK mounting system for its ease and robust construction. BLACK's rotating clamps use fine pitch machined brass inserts to prevent thread stripping. The stainless steel machine bolts are thread-strip and rust resistant. Rubber damping pads on the mounting clamps minimize the likelihood of Sheetrock blowout as well as serve to damp resonance, vibration and buzzing. Better installs, better sound, it's all better with BLACK.



CONTOUR SWITCH

Reference and Performance speakers offer a high frequency contour switch with -3dB, 0 (flat) and +3 dB settings to match speaker performance to the room acoustics. Highly reflective "live" rooms benefit from a -3dB HF reduction while fabric-heavy "dead" rooms will sound better with tweeters boosted +3dB.



BUILT-IN THEATER

Exceptional home cinema audio performance with near invisibility is now within reach. BLACK offers both in-ceiling and in-wall high performance speakers specifically designed for multi-channel home theater applications. The R83A and R63A models are 8 & 6½ inch two-way speakers with angled drivers and specially contoured baffles to focus sound at screen level for a perfect illusion that the speakers are in front of the screen. The T53LCR is a Reference series in-wall speaker that may be used vertically as left/right speakers and horizontally as a center speaker.



TPR RUBBER SURROUND

For installs in tough environments such as indoor pool areas, outdoors under eaves and commercial settings, use BLACK Reference series models. Their woofer surrounds are fabricated from injection molded Thermoplastic Rubber (TPR) – a copolymer that has superior damping characteristics and greater resistance to chemicals, UV and pollutants.



SINGLE POINT STEREO

The BLACK R62DT brings exceptional sound to small rooms, halls and service areas. Dual tweeters and woofer voice coils allow connection to a stereo amplifier with no loss of musical content. Or switch to surround mode and use them in pairs for rear and side-channel duties in home theater applications. Versatile, convenient and exceptional in performance – that's BLACK.







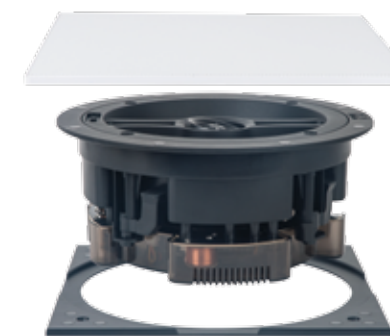
# PERFECT EDGE™

---

BLACK in-wall and in-ceiling speakers perform a near miraculous disappearing act. Rather than a wide flange found on most built-in speakers, BLACK speakers feature flange-free Perfect Edge™ magnetic grilles that minimize the visible footprint of the speaker for a clean, elegant and unobtrusive appearance.

## SQUARE OPTIONS

BLACK round in-ceiling models offer a square grille option to match the aesthetic of rectangular architectural elements such as lighting fixtures and air registers. While other brands may offer that option, only BLACK does it the correct way with a square mask that doesn't "telegraph" the round speaker silhouette behind the grille.



Square Grille Kit



Square Mask Eliminates The Round Silhouette



Without Mask



# R103 CEILING

---

The New R103 sits at the top of our ceiling line, and rightfully so! This 10 inch 3-way speaker is equipped with Reference level components and was built to impress with crisp, clean, accurate sound.

Build the ultimate ceiling theater experience, create a broader listening area in large rooms or living spaces. The R103 is also perfect as an upgrade to a current system that needs something extra.

## SPEC

3-Way Ceiling Speaker - Reference  
Woofer: 10" Carbon Fiber W/ TPR Surround  
Mid: 2" Treated Paper Dome  
Tweeter: 1" Pivoting Titanium Dome  
Freq Response: 24Hz-22k  
Power Handling: 200W  
Sensitivity: 91dB  
Impedance: 8 Ohm  
Dimensions: 14.1" x 6.18"







# SHALLOW MOUNT

Designed and engineered for tight spaces without sacrificing sound quality. Our Shallow Mount Speakers are equipped with PERFORMANCE level components and are available in 8 & 6 inch models. With only a 2.12"/ 54mm mounting depth for the R62SS and 2.75"/ 70mm for the R82SM & R62SM, these feature rich speakers are sure to become the new "go to" in a tight spot.

## WEATHER RESISTANT

Our shallow mount speakers are also weather resistant making them ultra versatile. They are perfect for outdoor patios, indoor pool/spa, bathrooms, commercial and nearly any other traditional or special speaker application.



R82 SM



R62 SM



R62 SS

## CEILING SPEAKERS



### R83

Ceiling Speaker - Reference  
Woofer: 8" Carbon Fiber W/ TPR Surround  
Tweeter: 1" Pivoting Ceramic Coated Aluminum Dome  
Freq Response: 28Hz-22k  
Power Handling: 175W  
Sensitivity: 91dB  
Impedance: 8 Ohm  
Dimensions: 11" x 4.33"



### R82

Ceiling Speaker - Performance  
Woofer: 8" Graphite W/ Rubber Surround  
Tweeter: 1" Pivoting CatEye Parachute Silk Soft Dome  
Freq Response: 38Hz-20k  
Power Handling: 150W  
Sensitivity: 88 dB  
Impedance: 8 Ohm  
Dimensions: 11" x 4.33"



### R83A

Angled Ceiling Speaker - Reference  
Woofer: 8" Graphite W/ Rubber Surround  
Tweeter: 1" Pivoting Ceramic Coated Aluminum Dome  
Freq Response: 28Hz-22k  
Power Handling: 175W  
Sensitivity: 91dB  
Impedance: 8 Ohm  
Dimensions: 11" x 5.4"



### R82A

Angled Ceiling Speaker - Performance  
Woofer: 8" Graphite W/ Rubber Surround  
Tweeter: 1" Pivoting CatEye Parachute Silk Soft Dome  
Freq Response: 38Hz-20k  
Power Handling: 150W  
Sensitivity: 88dB  
Impedance: 8 Ohm  
Dimensions: 11" x 5.4"



### R83DT

Stereo Ceiling Speaker - Reference  
Woofer: 8" Carbon Fiber W/ TPR Surround  
Tweeter: Dual ¾" Ceramic Coated Aluminum Dome  
Freq Response: 40Hz-20k  
Power Handling: 150W  
Sensitivity: 86dB  
Impedance: 8 Ohm  
Dimensions: 11" x 4.33"



### R82DT

Stereo Ceiling Speaker - Performance  
Woofer: 8" Graphite W/ Rubber Surround  
Tweeter: Dual ¾" CatEye Parachute Silk Soft Dome  
Freq Response: 45Hz-20k  
Power Handling: 150W  
Sensitivity: 87dB  
Impedance: 8 Ohm  
Dimensions: 11" x 4.33"



### R82SM

Slim Mount Ceiling Speaker - Performance  
Woofer: 8" PP Cone  
Tweeter: 1" PEI  
Freq Response: 70Hz-20k  
Power Handling: 100W  
Sensitivity: 88dB  
Impedance: 8 Ohm  
Dimensions: 10.48" x 2.75"



### R81

Ceiling Speaker - Acoustic  
Woofer: 8" Poly W/ Rubber Surround  
Tweeter: ½" Pivoting Silk Soft Dome  
Freq Response: 50Hz-22k  
Power Handling: 120W  
Sensitivity: 91dB  
Impedance: 8 Ohm  
Dimensions: 11" x 4.33"



### R63

Ceiling Speaker - Reference  
Woofer: 6.5" Carbon Fiber W/ TPR Surround  
Tweeter: 1" Pivoting Ceramic Coated Aluminum Dome  
Freq Response: 38Hz-20k  
Power Handling: 150W  
Sensitivity: 89dB  
Impedance: 8 Ohm  
Dimensions: 9.3" x 3.93"



### R63A

Angled Ceiling Speaker - Reference  
Woofer: 6.5" Carbon Fiber W/ TPR Surround  
Tweeter: 1" Pivoting Ceramic Coated Aluminum Dome  
Freq Response: 38Hz-20k  
Power Handling: 150W  
Sensitivity: 89dB  
Impedance: 8 Ohm  
Dimensions: 9.8" x 4.72"



### R62

Ceiling Speaker - Performance  
Woofer: 6.5" Graphite W/ Rubber Surround  
Tweeter: 1" Pivoting CatEye Parachute Silk Soft Dome  
Freq Response: 40Hz-20k  
Power Handling: 120W  
Sensitivity: 87dB  
Impedance: 8 Ohm  
Dimensions: 9.3" x 3.93"



### R62A

Angled Ceiling Speaker - Performance  
Woofer: 6.5" Graphite W/ Rubber Surround  
Tweeter: 1" Pivoting CatEye Parachute Silk Soft Dome  
Freq Response: 40Hz-20k  
Power Handling: 120W  
Sensitivity: 87dB  
Impedance: 8 Ohm  
Dimensions: 9.8" x 4.72"



# CEILING SPEAKERS



## R62DT

Stereo Ceiling Speaker - Performance  
Woofer: 6.5" DVC Poly W/ Rubber Surround  
Tweeter: Dual ¾" CatEye Parachute Silk Soft Dome  
Freq Response: 40Hz-20k  
Power Handling: 120W  
Sensitivity: 88dB  
Impedance: 8 Ohm  
Dimensions: 9.3" x 3.93"



## R62TSM

Shallow Mount 70V/8-Ohm In-Ceiling Speaker  
Woofer: 6.5" Graphite Cone, Butyl Surround  
Tweeter: 1" Titanium Dome  
Frequency Response: 106Hz - 20kHz  
Power Handling: 40W(RMS)/ 80W(MAX)  
Sensitivity: 86 dB 1w/1m  
Impedance: 8 Ohms/ 70V  
100V Wattage Taps: 40W, 20W, 10W, 5W  
70V Wattage Taps: 20W, 10W, 5W, 2.5W  
8-Ohm Setting Bypasses Internal Transformer  
Diameter & Depth: 12.25" x 4.1"



## R62SM

Shallow Mount Ceiling Speaker - Performance  
Woofer: 6.5" PP Cone  
Tweeter: 1" PEI Dome  
Freq Response: 75Hz-22k  
Power Handling: 60W  
Sensitivity: 86dB  
Impedance: 8 Ohm  
Dimensions: 9.3" x 2.75"



## R62EZ

EZ Mount Ceiling Speaker - Performance  
Woofer: Injection PP Cone  
Tweeter: 1" CatEye Parachute Silk Soft Dome  
Adjustable Contour Switches: Bass/Treble  
Freq Response: 50Hz - 20kHz  
Power Handling: 120W Max  
Sensitivity: 89dB 1w/1m  
Second-order 12dB crossover network  
Impedance: 8 ohms  
Dimensions: 9.05" x 3.14"



## R62SS

Super Slim Ceiling Speaker - Performance  
Woofer: 6.5" Composite Glass  
Tweeter: 1" PEI Dome  
Freq Response: 55Hz-22k  
Power Handling: 100W  
Sensitivity: 88dB  
Impedance: 8 Ohm  
Dimensions: 9.3" x 2.12"



## R61EZ

EZ Mount Ceiling Speaker - Acoustic  
Woofer: 6.5" Poly W/ Rubber Surround  
Tweeter: 1" Pivoting Soft Dome  
Freq Response: 60Hz - 20kHz  
Power Handling: 100W Max  
Sensitivity: 88dB 1 w/1 m  
Impedance: 8 ohms  
Dimensions: 9.05" x 3.14"



## R61

Ceiling Speaker - Acoustic  
Woofer: 6.5" Poly W/ Rubber Surround  
Tweeter: ½" Pivoting Silk Soft Dome  
Freq Response: 55Hz-20k  
Power Handling: 100W  
Sensitivity: 86dB  
Impedance: 8 Ohm  
Dimensions: 9.3" x 3.93"



## R53

Ceiling Speaker - Reference  
Woofer: 5.25" Carbon Fiber W/ TPR Surround  
Tweeter: 1" Pivoting Ceramic Coated Aluminum Dome  
Freq Response: 50Hz-20k  
Power Handling: 100W  
Sensitivity: 87dB  
Impedance: 8 Ohm  
Dimensions: 8.2" x 3.81"



## R52

Ceiling Speaker - Performance  
Woofer: 5.25" Graphite W/ Rubber Surround  
Tweeter: 1" Pivoting CatEye Parachute Silk Soft Dome  
Freq Response: 55Hz-20k  
Power Handling: 90W  
Sensitivity: 85dB  
Impedance: 8 Ohm  
Dimensions: 8.2" x 3.81"



## R51

Ceiling Speaker - Acoustic  
Woofer: 5.25" Poly W/ Rubber Surround  
Tweeter: ½" Pivoting Silk Soft Dome  
Freq Response: 65Hz-20k  
Power Handling: 100W  
Sensitivity: 87dB  
Impedance: 8 Ohm  
Dimensions: 8.2" x 3.81"



## R51

Ceiling Speaker - Acoustic  
Woofer: 5.25" Poly W/ Rubber Surround  
Tweeter: ½" Pivoting Silk Soft Dome  
Freq Response: 65Hz-20k  
Power Handling: 100W  
Sensitivity: 87dB  
Impedance: 8 Ohm  
Dimensions: 8.2" x 3.81"



## R10

Passive Ceiling Subwoofer  
10" Long Excursion Graphite Cone Woofer  
Power Handling: 200 Watts  
Freq Response: 30 - 120Hz  
Sensitivity: 92dB 1W/1m  
Grille: Trimless Thin-Bezel held by Neo Magnets  
Mounting Bracket Included  
Dimensions: 13 3/8" x 6 ½"



# NEXT LEVEL LISTENING

Our T-Series In-Wall LCR (left, right, center) speakers are a remarkable custom installed speaker line that delivers incredibly rich sound in an attractively priced package. Ideal for home theaters and media rooms where space is limited and aesthetics are important, the T-Series is a 3-way in-wall LCR speaker that fills in left, center and right channels to the front stage of your surround sound audio system. Sold individually, these in-wall LCR speakers can be used as a center-channel speaker in a surround-sound stereo system or as a right or left speaker in a high-end system.



Ingredients that make the sound quality so outstanding include three 6.5" carbon fiber-filled polycarbonate cone woofers that thump out full and enriching bass tones and a 1" titanium metal dome tweeter serves crisp, distortion-free sound on the high end. For the critical midrange frequencies where dialog and instruments live, the Black T-69 includes a 6.5" carbon fiber mid cone for a wide and enveloping sound stage. Adding to the audio perfection is a totally sealed enclosure with isolated internal chambers so you get the great sound of a high-end tower speaker in an in-wall design.

# T-SERIES LCR

## T69LCR



Woofer: Triple 6.5" Carbon Fiber Cone Drivers  
Midrange: 6.5" Carbon Fiber Cone Driver  
TPR Surrounds  
Tweeter: 1" Titanium Dome  
Power Handling: 200W  
Cloth Magnetic Grille  
Sensitivity: 91Db 1W/1M  
Frequency Response: 100Hz-20kHz  
Impedance: 8 Ohm  
Dimensions: HxWxD 43.6" X 12.8" X 4.13

## T65LCR



Woofer: Dual 6.5" Carbon Fiber Cone Drivers  
TPR Surrounds  
Midrange: One 4" Paper Cone Driver  
Tweeter: One 1" Titanium Dome  
Power Handling: 100W  
Cloth Magnetic Grille  
Sensitivity: 90dB 1w/1m  
Frequency Response: 100Hz - 20kHz  
Impedance: 8 Ohm  
Dimensions: HxWxD 29.52" x 12.79" x 4.13"

## T68LCR



Woofer: Triple 6.5" Graphite Cone Drivers  
Midrange: 6.5" Graphite Cone Driver  
TPR Surrounds  
Tweeter: 1" Ceramic Coated Aluminum  
Power Handling: 160W  
Cloth Magnetic Grille  
Sensitivity: 89Db 1W/1M  
Frequency Response: 100Hz-20kHz  
Impedance: 8 Ohm  
Dimensions: HxWxD 43.6" X 12.8" X 4.13

## T64LCR



Woofer: Dual 6.5" Graphite Cone Drivers  
TPR Surrounds  
Midrange: One 4" Paper Cone Driver  
Tweeter: One 1" Ceramic Coated Aluminum  
Power Handling: 80W  
Cloth Magnetic Grille  
Sensitivity: 89dB 1w/1m  
Frequency Response: 100Hz - 20kHz  
Impedance: 8 Ohm  
Dimensions: HxWxD 29.52" x 12.79" x 4.13"

# IN-WALL SPEAKERS

## T83



In-Wall Speaker - Reference  
Woofer: 8" Carbon Fiber W/ TPR Surround  
Tweeter: 1" Pivoting Ceramic Coated Aluminum Dome  
Freq Response: 28Hz-22k  
Power Handling: 175W  
Sensitivity: 91dB  
Impedance: 8 Ohm  
Dimensions: HxWxD 14.4" x 10.4" x 3.81"

## T63



In-Wall Speaker - Reference  
Woofer: 6.5" Carbon Fiber W/ TPR Surround  
Tweeter: 1" Pivoting Ceramic Coated Aluminum Dome  
Freq Response: 38Hz-20k  
Power Handling: 150W  
Sensitivity: 89dB  
Impedance: 8 Ohm  
Dimensions: HxWxD 12.4" x 9" x 3.62"

## T53LCR



In-Wall Speaker - Reference  
Woofer: Dual 5.25" Carbon Fiber W/ TPR Surround  
Tweeter: 1" Pivoting Ceramic Coated Aluminum Dome  
Freq Response: 38Hz-22k  
Power Handling: 150W  
Sensitivity: 91dB  
Impedance: 8 Ohm  
Dimensions: HxWxD 15.9" x 8.2" x 3.14"

## T82



In-Wall Speaker - Performance  
Woofer: 8" Graphite W/ Rubber Surround  
Tweeter: 1" Pivoting CatEye Parachute Silk Soft Dome  
Freq Response: 38Hz-22k  
Power Handling: 150W  
Sensitivity: 88dB  
Impedance: 8 Ohm  
Dimensions: HxWxD 14.4" x 10.4" x 3.81"

## T62



In-Wall Speaker - Performance  
Woofer: 6.5" Graphite W/ Rubber Surround  
Tweeter: 1" Pivoting CatEye Parachute Silk Soft Dome  
Freq Response: 55Hz-22k  
Power Handling: 120W  
Sensitivity: 87dB  
Impedance: 8 Ohm  
Dimensions: HxWxD 12.4" x 9" x 3.62"

## T81



In-Wall Speaker - Acoustic  
Woofer: 8" Poly W/ Rubber Surround  
Tweeter: 1/2" Pivoting Silk Soft Dome  
Freq Response: 50Hz-20k  
Power Handling: 120W  
Sensitivity: 88dB  
Impedance: 8 Ohm  
Dimensions: HxWxD 14.4" x 10.4" x 3.81"

## T61



In-Wall Speaker - Acoustic  
Woofer: 6.5" Poly W/ Rubber Surround  
Tweeter: 1/2" Pivoting Silk Soft Dome  
Freq Response: 65Hz-20k  
Power Handling: 100W  
Sensitivity: 89dB  
Impedance: 8 Ohm  
Dimensions: HxWxD 12.4" x 9" x 3.62"





# ART TECHNOLOGY

---

If you've ever been to a concert chances are you've seen and definitely heard a line array speaker setup. While concert quality sound can be truly awesome it's not exactly practical or affordable in a home application.

Here's where ART comes in, our Reference level In-walls are built and tuned to near perfection and only get better when multiplied. Creating an In-wall line array with 4-8 speakers per channel gives you an incredible fully immersed listening experience. Whether it's your favorite movie or a live recording of your favorite band it'll be just like you are there and all without losing any of your rooms aesthetics or function.



T83  
Reference In-Wall



T63  
Reference In-Wall



# THE NEW S MKII

Our Black S Series Studio Monitor/On-wall speakers are all about performance and are the perfect addition to high-end, dedicated home theaters. All three models are tailored for audiophiles who appreciate the subtle but significant differences between high-end and ultra-high-end speakers. All speakers in the Black S series have a sonically neutral cabinet design for a stable, resonance-free platform for the custom drivers. The cabinet virtually "disappears" when the music or movie begins so all you hear is a precise soundstage, deep and controlled bass, crisp and natural mid and high frequencies.

## CUSTOM LOW AND HIGH-FREQUENCY DRIVERS

The Black S Series includes custom-built low and high frequency drivers for spine-chilling accuracy and sonic detail. The woofer cones are made of a proprietary blend of long strand fiber, creating a light, rigid radiating surface for clean, fast and distortion-free bass. For high frequency sound, a triple tweeter array provides superior sound quality with pinpoint accuracy and flawless reproduction. The triple tweeter array with advanced waveguide can be rotated for LCR configurations as well.



# S-SERIES MKII



## S82 MKII

8" Home Theater / On-Wall Speaker  
Woofer: Dual 8" Long Wood Fiber Inter-thread  
Double Compressed Cone  
Tweeter: Triple Tweeter Array Silk Dome  
X-Over: 12db Second Order at 2200hz  
Cabinet: Front Inverted With High Transparency Grille  
Gold Plated Speaker Terminals - 5-way binding posts  
Power Handling: 200W  
Sensitivity: 92dB 1w/1m  
Max SPL: 116 dB  
Freq Response: 70Hz - 22kHz (Measured On-Wall)  
+/- 3dB and 45Hz -10dB  
Impedance: 4 ohms  
Finish: Black PUV Coated Surface  
Dimensions: HxWxD 39.2" x 10" x 6.25"



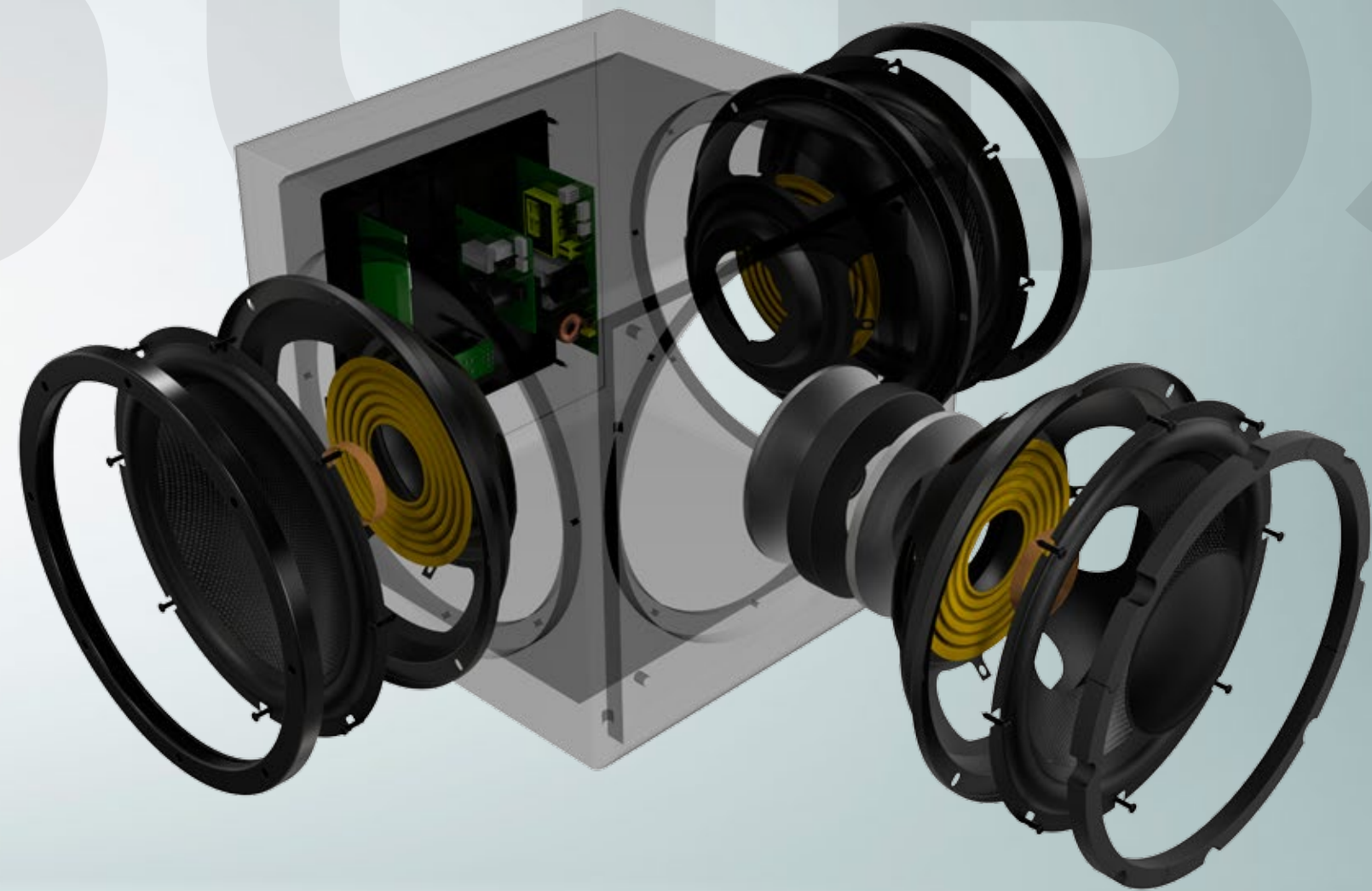
## S80 MKII

8" Home Theater / On-Wall Speaker  
Woofer: 8" Long Wood Fiber Inter-thread  
Double Compressed Cone  
Tweeter: Silk Dome  
X-Over: 12db Second Order at 2200hz  
Cabinet: Front Inverted With High Transparency Grille  
Gold Plated Speaker Terminals - 5-way binding posts  
Power Handling: 180W  
Sensitivity: 85dB 1w/1m  
Max SPL: 108dB  
Freq Response: 90Hz - 20kHz (Measured On-Wall)  
+/- 3dB and 55Hz -10dB  
Impedance: 4 ohms  
Finish: Black PUV Coated Surface  
Dimensions: HxWxD 16.3" x 10" x 5.5"



## S81 MKII

8" Home Theater / On-Wall Speaker  
Woofer: 8" Long Wood Fiber Inter-thread  
Double Compressed Cone  
Tweeter: Triple Tweeter Array Silk Dome  
X-Over: 12db Second Order at 2200hz  
Cabinet: Front Inverted With High Transparency Grille  
Gold Plated Speaker Terminals - 5-way binding posts  
Power Handling: 180W  
Sensitivity: 91dB 1w/1m  
Max SPL: 112dB  
Freq Response: 70Hz - 22kHz (Measured On-Wall)  
+/- 3dB and 45Hz -10dB  
Impedance: 4 ohms  
Finish: Black PUV Coated Surface  
Dimensions: HxWxD 30.9" x 10" x 6.25"



# TREVOCE EQ DSP

This is the best all-round sub in our history. Incorporated in the Trevoce 8/10/12 EQ DSP is the new native EQ, and the IWoofers DSP engine. The native EQ has allowed us to extract the maximum bass extension possible from our design. This allows the full range of musical instruments and special effects to be reproduced. Our Trevoce subs offer the smallest footprint you will find in triple driver designs.

## SPEC

### TREVOCE15 EQ DSP

Triple 15" Active Subwoofer  
 Active Woofer: 15"  
 Passive Woofer: Dual 15"  
 Frequency Response: 16Hz-160Hz  
 Power: 1000W  
 Impedance: 4 Ohms  
 Phase 0-180°  
 Voltage 100-120V AC / 220-240V  
 Inputs Hi Level / Low Level  
 Dimensions: 19.3 x 19.3 x 19.3in



TREVOCE 15  
1000W

### TREVOCE12 EQ DSP

Triple 12" Active Subwoofer  
 Active Woofer: 12"  
 Passive Woofer: Dual 12"  
 Frequency Response: 18Hz-160Hz  
 Power: 800W  
 Impedance: 4 Ohms  
 Phase 0-180°  
 Voltage 100-120V AC / 220-240V  
 Inputs Hi Level / Low Level  
 Dimensions: 16 x 15.4 x 15in



TREVOCE 12  
800W

### TREVOCE10 EQ DSP

Triple 10" Active Subwoofer  
 Active Woofer: 10"  
 Passive Woofer: Dual 10"  
 Frequency Response: 20Hz-160Hz  
 Power: 500W  
 Impedance: 4 Ohms  
 Phase 0-180°  
 Inputs Hi Level / Low Level  
 Voltage 100-120V AC / 220-240V  
 Dimensions: 14.6 x 14.6 x 13in



TREVOCE 10  
500W

### TREVOCE8 EQ DSP

Triple 8" Active Subwoofer  
 Active Woofer: 8"  
 Passive Woofer: Dual 8"  
 Frequency Response: 30Hz-160Hz  
 Power: 300W  
 Impedance: 4 Ohms  
 Phase 0-180°  
 Inputs Hi Level / Low Level  
 Voltage 100-120V AC / 220-240V  
 Dimensions: 12 x 13.1 x 12in



TREVOCE 8  
300W





# SC800D IN-WALL SUB

---

Our SC800D is a passive in-wall subwoofer with an 8" polypropylene woofer and a 10" passive radiator to give you the richest low frequency response (bass) in the most compact package. This slim in-wall sub fills in the low notes missing from your movies and music and enhances overall sound quality without taking up any of your floor space. The Black SC800D includes the active 8" polypropylene woofer that produce clear, full bass tones while a 10" passive radiator enhances frequency response and gives you the most distortion-free sound. The SL800D is capable of handling up to 300 Watts of power so it can be paired with a robust amplifier and has a paintable frame and grille to blend into any room.

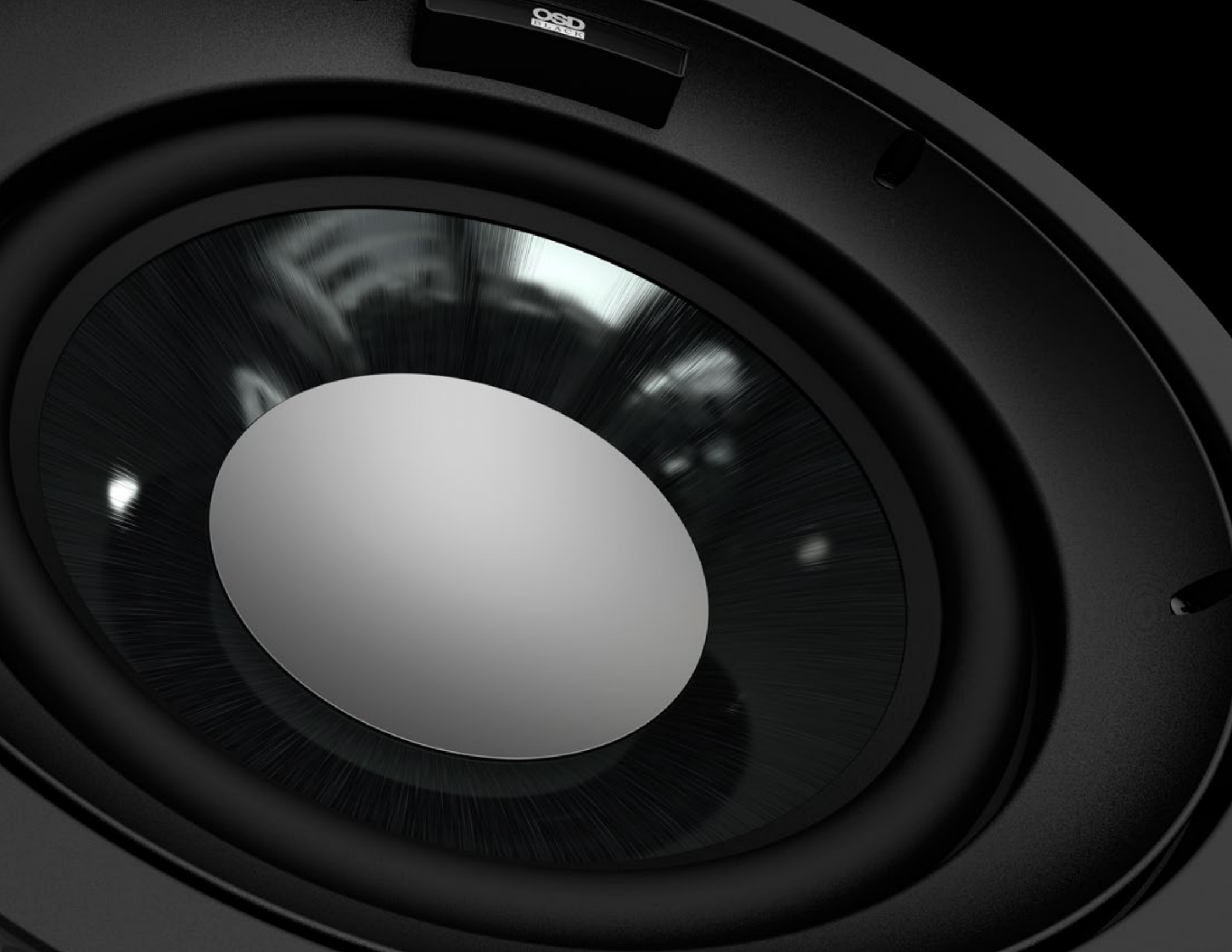
## SPEC

Power Handling: 300W  
Woofer: 8" 8 Ohm  
Passive Radiator: 10"  
Tuned Enclosure  
Frequency Response: 40Hz - 500Hz  
Overall Dimensions: H 22" x W 17.5" x D 4.3"  
Cut Out Dimensions: H 20" x W 14.5"  
Mounting Depth: 3.9"



SC800D  
IN-WALL SUB





# R10 CEILING SUB

---

Designed for serious sound enthusiasts, our OSD Black BK-R10 10" in-ceiling subwoofer will bring down the house with room-filling bass without taking up an inch of floor space. Mounting flush into the ceiling, this passive subwoofer includes a 10" long excursion graphite woofer that enhances sound quality by moving more air required by low frequency sound waves. This stealthy ceiling subwoofer handles up to 200W of power so when connected to one of our Sub Amps, you'll experience movies and music like you've never heard before.

## SPEC

Passive Ceiling Subwoofer  
10" Long Excursion Graphite Cone Woofer  
Power Handling: 200 Watts  
Freq Response: 30 - 120Hz  
Sensitivity: 92dB 1W/1m  
Grille: Trimless Thin-Bezel held by Neo Magnets  
Mounting Bracket Included  
Dimensions: 13 3/8" x 6 1/2"



R10 CEILING SUB



# PENDANTS

Ideal for commercial and residential settings with irregular or uneven architectural features such as high vaulted ceilings, the Pendant83 hanging pendant speaker is disguised as a hanging lighting fixture so it blends easily into polished decors such as high-end malls, restaurants, bars, and museums as well as in homes where in-walls or in-ceiling speakers are not an option. Sold as a single speaker, the Pendant83 includes an 8" polypropylene woofer for added stiffness and durability as well as rich, detailed, and balanced sound. This elegant pendant speaker also includes a 1" silk dome tweeter for excellent coverage on the high end. For added safety, each speaker includes snap-on Gripple hooks and safety cables rated up to 100 pounds.

Pendant83 can be installed in Conventional 8-ohm residential system. The 70V/100V/8-ohm taps setting knob is conveniently located at the top of the speaker. Use it as a standard 8-ohm speaker (bypassing the internal transformer) or constant voltage system with multiple speakers in parallel (daisy chain) without sound degradation or risk of harming the amplifier.

## SPEC

### PENDANT83

Woofer: 8" poly cone w/rubber surrounds  
 Tweeter: 1" Silk Soft Dome  
 Freq Response: 60Hz - 20kHz, Range (-3dB)  
 Power Handling: 150W  
 Sensitivity: 89dB 1W/1M  
 Impedance: 8 ohm  
 100V Taps: 64W, 32W, 16W, 8W  
 70V Taps: 32W, 16W, 8W, 4W  
 Finish: Black or White  
 Dimensions: (LxWxH) 15.2 x 15.1 x 13.5



### PENDANTSUB

Woofer: 10" PP Cone  
 Transformer 70V/100V 8 Ohm/120W  
 Power Handling: 300W  
 Sensitivity: 86dB  
 Freq Response: 55Hz - 1 kHz  
 Impedance: 8 ohm  
 70V Taps: 100W, 50W, 25W, 12.5W, 6.25W  
 100V Taps: 100W, 50W, 25W, 12.5W  
 Finish: Black  
 Dimensions: (LxWxH) 15 x 16 x 14







# P83 OUTDOOR

The Black P-83 Outdoor Patio Speaker is an all-weather 2-way speaker that delivers high fidelity sound to patios, decks and other outdoor settings. Featuring an 8" polypropylene woofer and titanium dome tweeter, these rugged patio speakers handle 150W of power for dynamic and enveloping outdoor sound and include all mounting hardware is included. The P-83 can be used as a standard 8-ohm speaker or as a 70V speaker for commercial applications with settings on the back to match your application.

## SPEC

Woofer: 8" Injected PP Cone  
Tweeter: 1" Titanium Dome  
Power Handling: 150W  
Sensitivity: 88dB 1w/1m  
Frequency Response: 50Hz - 20kHz  
Impedance: 8 Ohm  
70V Settings: 50W, 25W, 12.5W, 5W, 3W  
Weather Resistant  
Color: Black/White  
Dimensions (HxWxD): 13.6" x 8.7" x 9.3"



P83  
OUTDOOR PATIO





# XSUB IN-GROUND

---

The Black Series XSUB is a in-ground subwoofer designed for both commercial and residential environments. Designed with durable, weather-resistant components, the XSUB is buried underground with only the vent peaking from the surface.

It provides high-end audio with an elegant, unobtrusive design. The XSUB kicks out earth-shaking low-end with up to a 500W power rating, and the durable polypropylene cone includes a rubber surround, not foam, so it will last through years of steamy hot summers and freezing cold winters.

## SPEC



### XSUB12

Woofer: 12" Polypropylene Cone With Rubber Surround  
Power: 500 Watts Max  
Freq Response: 30Hz - 150Hz  
Sensitivity: 82 dB  
Impedance: 8 Ohm  
70V Settings: 300W, 150W, 75W  
Dimensions: (HxWxD) 24.5" x 24" x 13.75"

# SRT STREAMING

SRT is a four or single zone Multimedia Audio Streaming Server that has you covered for both commercial and residential clients who want to stream and control audio in homes, restaurants, offices, gyms, or retail spaces. This feature-rich wireless streaming pre-amplifier connects and delivers 24-bit audiophile-level sound quality from a music library, Spotify, Napster, iTunes or iHeartRadio and can be used with Alexa to play other music sources or internet radio—all easily controlled with the free OSD Play App for smartphones or tablets.

## SPEC

### SRT4

HiFi 4-Zone Streaming Media Server  
App Control  
DAC: Cirrus Logic CS8406 24 Bit/192kHz DAC  
WiFi Frequency: 2.4 GHz  
Inputs: Wi-Fi®, LAN, RCA, Optical  
Outputs: RCA, Optical  
Rack Mountable: 1U Mounts Included  
Dimensions (L x H x D): 17" x 1.77" x 5.9"

### SRT1

HiFi DAC Music Streaming Module  
App Control  
DAC: Cirrus Logic CS8406 24 Bit/192kHz DAC  
WiFi Frequency: 2.4 GHz  
Bluetooth Version: 4.2 V/ aptX™  
Inputs: Wi-Fi®, Bluetooth®, LAN, TF Card, 3.5mm  
Outputs: 3.5mm Jack, Optical  
Remote Control: Yes  
Dimensions (L x H x D): 4.5" x 1.18" x 4.5"





# THEATRO X11

Our Black Theatro X11 is a high current, audiophile-level 11-channel amplifier that will easily power multiple speakers without concerns of dynamic headroom during complex music passages or distortion at high-volume levels. A beast of an amp at 234 pounds, the X11 pushes the power limits yet is designed to operate efficiently with the latest amplifier topology for listening to your favorite multi-channel music or movie soundtracks. We designed the Theatro X11 to do one thing—power your speakers as effectively and efficiently as possible—so you can experience acoustic nuances like you’ve never heard before.

## SPEC

380W per channel at 8 Ohm  
600W per channel at 4 Ohm  
Frequency Response: +/- 0.1dB 10Hz ~ 20kHz, -2dB/ +3dB  
Signal to Noise Ratio: 100dB unweighted  
Distortion: <0.01% (THD 20Hz – 20kHz)  
Damping Factor: >300  
Gain: 0.9V (1.2 dBm) Unbalanced 1.2V (3.8 dBm) Balanced  
Channel Separation: 65dB @ 1kHz, Referred To 250W Output Into 8 Ohm  
Input Impedance: >20k Ohms  
External Trigger: 5 ~30V AC/DC  
DC Offset: < 5mV  
Power Requirements: 120V ~ 60 Hz 300W  
Stand-By Power Consumption: 5W  
Chassis Type: 10 RU  
Dimensions: 17.25" W x 18.3" H x 21.37" D



THEATRO X11  
HIGH CURRENT AMPLIFIER



# SAM300 SUB AMPLIFIER

---

A dedicated high power Subwoofer Amplifier, The SAM300 is a perfect fit for any passive sub system. Equipped with adjustable volume, frequency, phase control and 300 watts of power to rock the house.

## SPEC

Mono

Power Output:

150W at 8 Ohm

300W at 4 Ohm

Bass Boost: 25 Hz – 50 Hz

Low Pass Adjustment: 40 Hz – 180 Hz

Phase Adjustment: 0° – 180°

Gain: 0 dB – +10 dB

Power Requirements: 120VAC - 240VAC

CE Rated

Dimensions: H 3.75 x W 17.25 x D 13.87 in.



SAM300 SUBWOOFER  
AMPLIFIER



# BMA6012P PRO AMP

A major step forward in technology for custom installed amplifiers. This amp features either Twelve Zone mono channels (70V) or Six Stereo Zones (8/4 Ohm) or a combination of both 70V and 8/4 Ohm 85% class D design technology, can operate as 6 independent Stereo Zone amplifiers. Simple Input and Output and can be configured to either 70-Volt, 8-Ohm or 4-ohm speaker circuits.

BMA6012P includes RS232 for IP interface with Home Automation Systems  
Additional features include: Auto Off & Multi Voltage; operating on 110V-120V/60Hz or 220V-240V /50Hz AC mains.

## SPEC

6 Zone 12 Channel Professional Amplifier

Continuous Output Power:

30W per channel 8 Ohm, 50W per channel 4 Ohm

100W Bridged 8 Ohm, 30W per channel 70V/100V

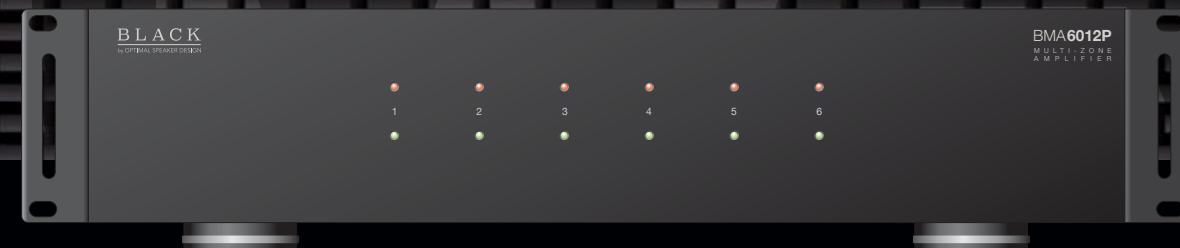
Frequency Response: 20Hz to 20kHz+/-1dB

Input Sensitivity: 600mV @ 30W

2U Rack Height

Power Requirements: 115VAC 60Hz 10A/ 230VAC 50Hz 5A

Dimensions: W 16.9 x H 3.4 x D 16.3 in.



BMA6012P MULTI ZONE  
PROFESSIONAL AMPLIFIER

# INSTALLATION ACCESSORIES



## MOV50W

70V Outdoor Volume Control  
 Audio Power Handling: 50W Peak  
 Frequency Response: 20Hz - 20KHz  
 Weather Proof Housing  
 Switch: 1-Position Rotary Volume Control  
 Attenuation Levels: OFF - 2 Steps@6dB  
 - 7 Steps@3dB - ON



## BB8

8" Ceiling Speaker Back Box  
 8" Ceiling Speaker Back Box  
 Fire Retardant Metal Box  
 Sealed Box Adds Protection  
 Enhanced Sound Quality  
 For All 8" Inch Round Speakers  
 Overall Dimensions: WxHxD 17.75" x 18" x 5"  
 Enclosure Dimensions: WxHxD 14.25" x 17.5" x 5"  
 Opening Diameter: 9.375"



## BB6

6½" Ceiling Speaker Back Box  
 Fire Retardant Metal Box  
 Sealed Box Adds Protection  
 Enhanced Sound Quality  
 For All 6½" Inch Round Speakers  
 Overall Dimensions: WxHxD 17.75" x 18" x 5"  
 Enclosure Dimensions: WxHxD 14.25" x 17.5" x 5"  
 Opening Diameter: 7.75"



## 100W70T

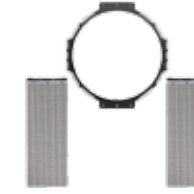
Primary Voltage: 70V  
 Power Rating: 100W  
 Primary Taps: 100, 80, 60, 40, 20 W  
 Secondary Impedance: 8, 4 Ohms  
 Insertion Loss: 1dB  
 Frequency Response: 20Hz - 20kHz ±1dB  
 Mounting Dimensions: 3.37"W x 2"D x 2"H



## 50W70T

Primary Voltage: 70V  
 Power Rating: 50W  
 Primary Taps: 50, 40, 30, 20, 10 W  
 Secondary Impedance: 8, 4 Ohms  
 Insertion Loss: 1dB  
 Frequency Response: 20Hz - 20kHz ±1dB  
 Mounting Dimensions: 3.37"W x 2"D x 2"H

# INSTALLATION ACCESSORIES



## NC10

10 inch New Construction Bracket  
 For Use With All 10" Round Models:  
 R103



## NC8

8 inch New Construction Bracket  
 For Use With All 8" Round Models:  
 R81 R82 R83 R83DT R82DT R82SM



## NC8A

8 inch New Construction Bracket  
 For Use With All 8" Round Angled Models:  
 R83A R82A



## NC8W

8 inch In-Wall New Construction Bracket  
 For Use With All 8" In-Wall Models:  
 T81 T82 T83



## NC6

6.5 inch New Construction Bracket  
 For Use With All 6.5" Round Models:  
 R61 R62 R63 R62DT R62SM



## NC6A

6.5 inch New Construction Bracket  
 For Use With All 6.5" Round Angled Models:  
 R63A R62A R62SS



## NC6W

6.5 inch In-Wall New Construction Bracket  
 For Use With All 6.5" In-Wall Models:  
 T61 T62 T63



## NC5

5.25 inch In-Wall New Construction Bracket  
 For Use With All 5.25" Round Models:  
 R51 R52 R53





BLACK



[osdblack.com](http://osdblack.com)